

THIRTY CASSON SQUARE



SOUTHBANK PLACE
LONDON



Computer generated image of Thirty Casson Square is indicative only

“AT THE HEART
OF SOUTHBANK
PLACE, THIRTY
CASSON SQUARE’S
UNIQUE POSITION
WILL OFFER
UNRIVALLED
VIEWS ACROSS
LONDON”

Michael Squire / Squire and Partners

Designed by Squire & Partners, Thirty Casson Square, a new address on London’s bustling South Bank, will comprise of studios, one, two and three bedroom apartments, together with a collection of signature penthouses. Designed over 29 levels, it is perfectly positioned to enjoy breathtaking views across the new public square, the River Thames, Westminster and the City.

PERFECTLY SITUATED

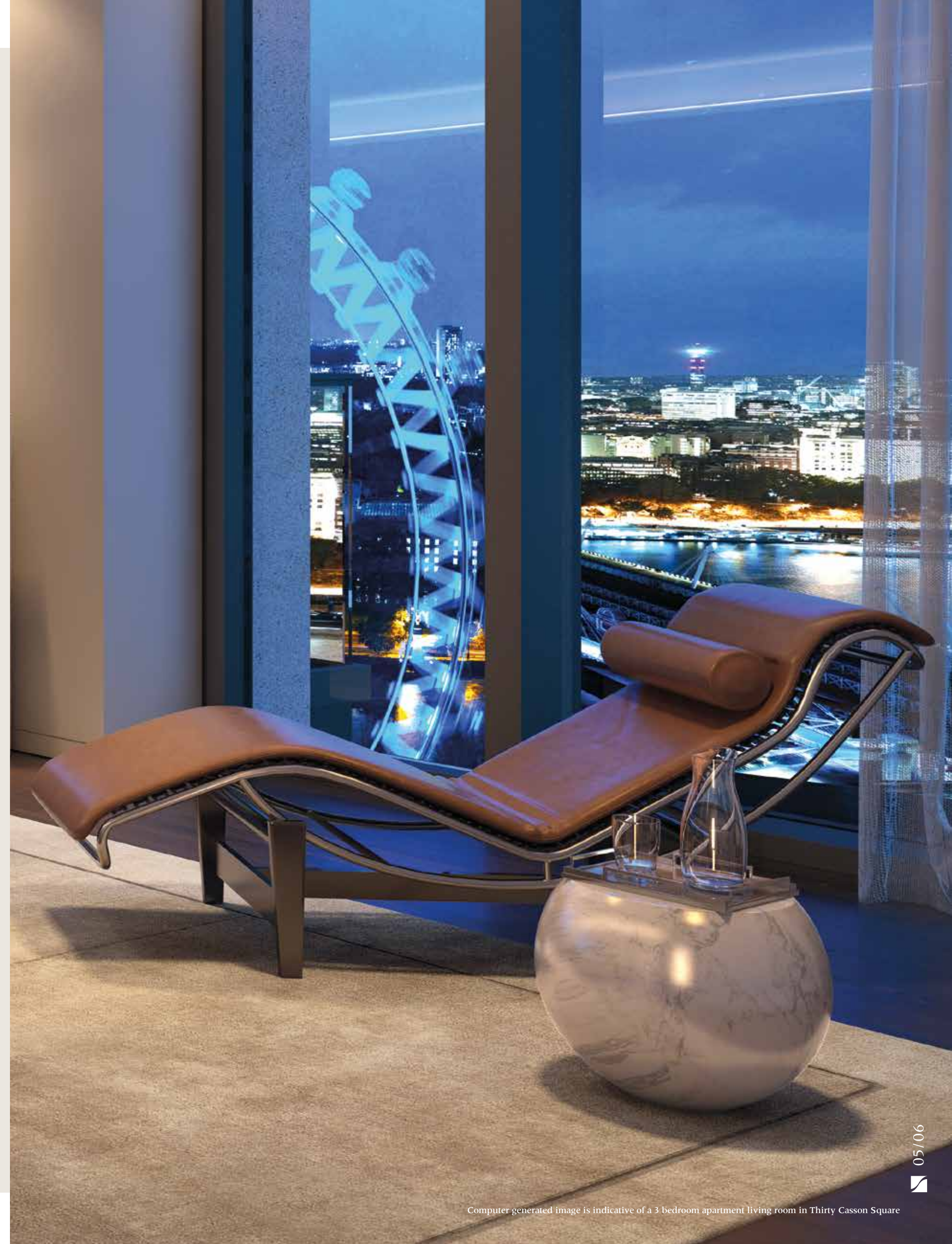


Thirty Casson Square at Southbank Place will offer a unique residential setting in the heart of London's cultural ribbon, with breathtaking views over Jubilee Gardens, the River Thames & Westminster.

"SOPHISTICATED DESIGN PROVIDES A BACKDROP FOR CONTEMPORARY LIVING"

Fiona Naylor / Johnson Naylor

Johnson Naylor's meticulous approach to quality and design will create memorable interiors with a seamless palette of natural materials and finishes. Carefully considered, these apartments are calm yet contemporary, with an emphasis on natural light and maximising views.

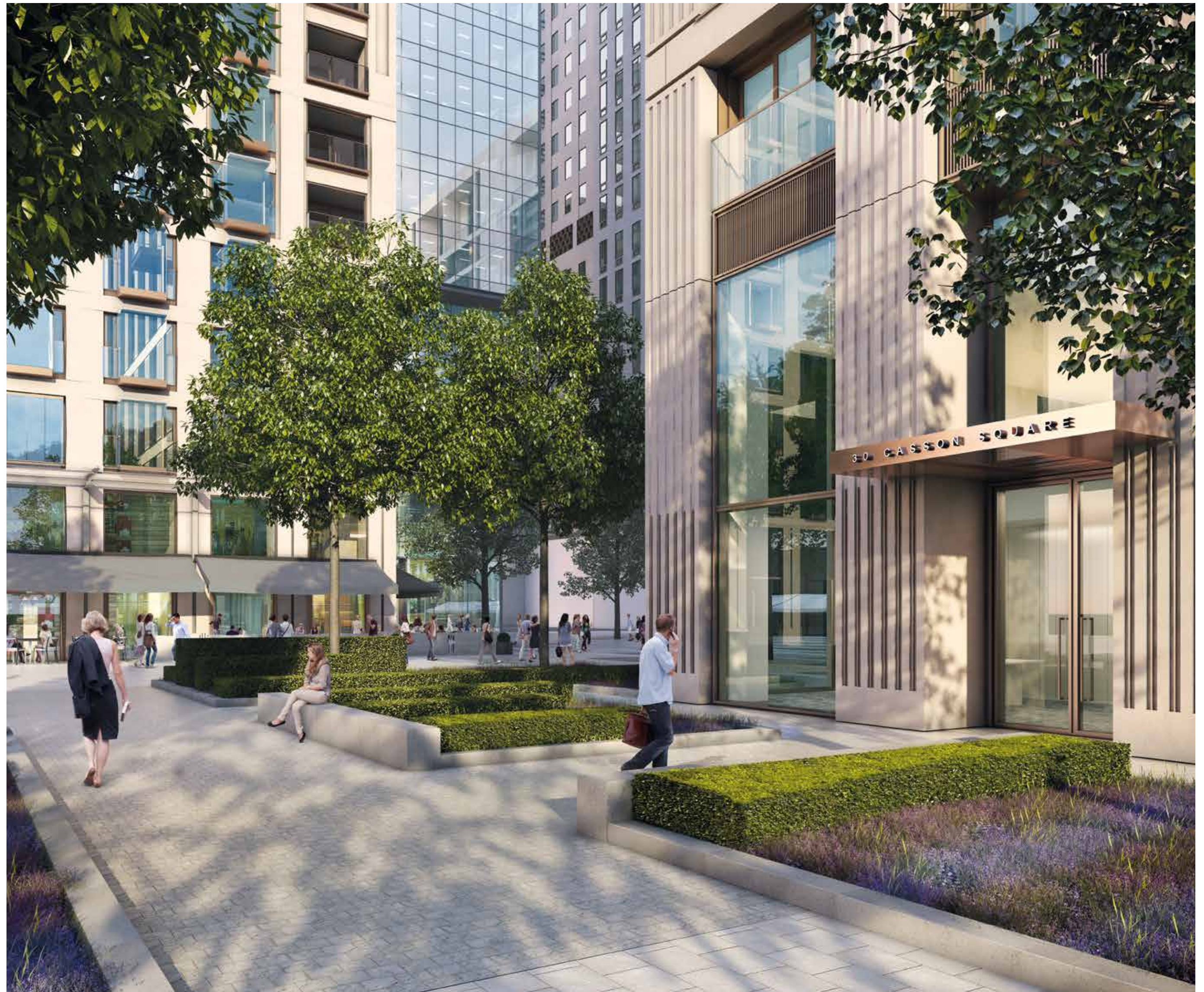


Computer generated image is indicative of a 3 bedroom apartment living room in Thirty Casson Square

THOUGHTFUL ARCHITECTURE AND LANDSCAPING CREATE A SERENE ENTRANCE TO THIRTY CASSON SQUARE

Entrance

The carefully choreographed approach to Thirty Casson Square uses landscape to separate the entrance from the public realm, creating a breathing space before entering the calmer environment of the residents' lobby and apartments beyond.





EXCLUSIVE RESIDENTS' HEALTH CLUB & SPA



Residents' Health Club & Spa

Thirty Casson Square enjoys exclusive access to an on-site private health and fitness club. Relax the mind, strengthen the body and promote a sense of wellbeing without leaving Southbank Place. Located on the lower ground level, the residents' only health and fitness club offers an infinity pool, gym and personal training area, treatment rooms and first-class changing facilities.



EXPERIENCE
THE CHANGING
PANORAMA
OVER LONDON,
FROM SUNRISE
TO SUNSET,
ALL FROM THE
COMFORT
OF YOUR
OWN HOME

Living Spaces

Flooded by light from the full-height windows, the living spaces have a light touch, with space to relax, entertain and watch the ever changing panorama of the city.







SEAMLESSLY
INTEGRATED,
THE KITCHENS
PROVIDE A
PERFECT
BALANCE
BETWEEN
PRACTICALITY
AND STYLE

Kitchens

Accentuating the open plan design, the kitchens are elegantly understated but highly specified, with luxury quality appliances and sophisticated finishes, ideal for all occasions.





AN OASIS OF CALM AND RELAXATION

Bathrooms & En Suites

An elegant and practical design featuring high quality natural materials and classic detailing, combined with practical walk in showers and functional storage - a perfect environment in which to relax and refresh.



A REFINED AND TRANQUIL RETREAT

Bedrooms

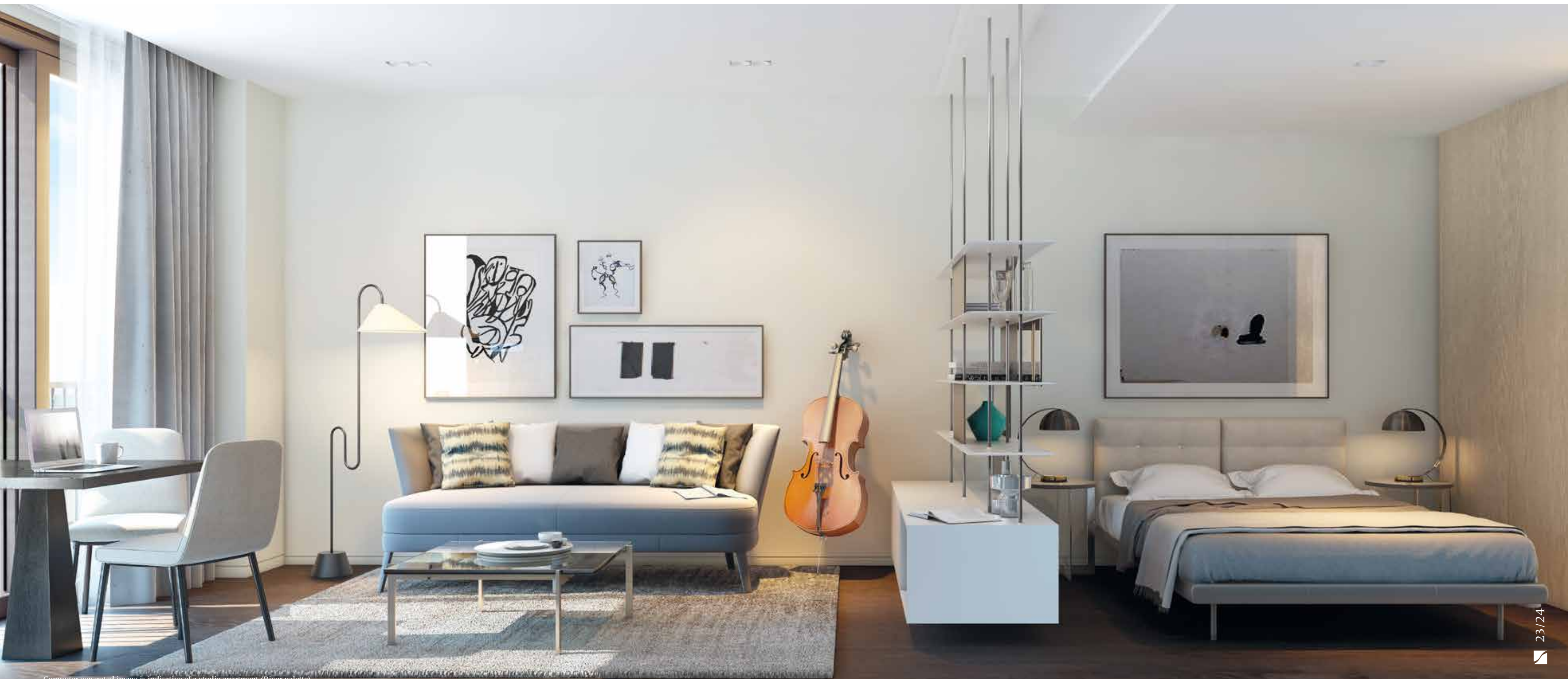
A calm and serene environment with floor to ceiling windows, carefully-layered illumination and generous built in storage creates an effortless sense of relaxation.



SMART AND SOPHISTICATED, WITH NO COMPROMISE ON STYLE AND SPECIFICATION

Studios

Achieving the right balance of natural light, space and privacy, the studios at Thirty Casson Square show how intelligent design can create a stylish home.



CLEVER,
INTELLIGENT
INTERIORS,
FOR BOTH DESIGN
AND FUNCTION

Studio / Living Space

One living area, a variety of uses. A partially-concealed kitchen, space for soft seating and room for casual dining.



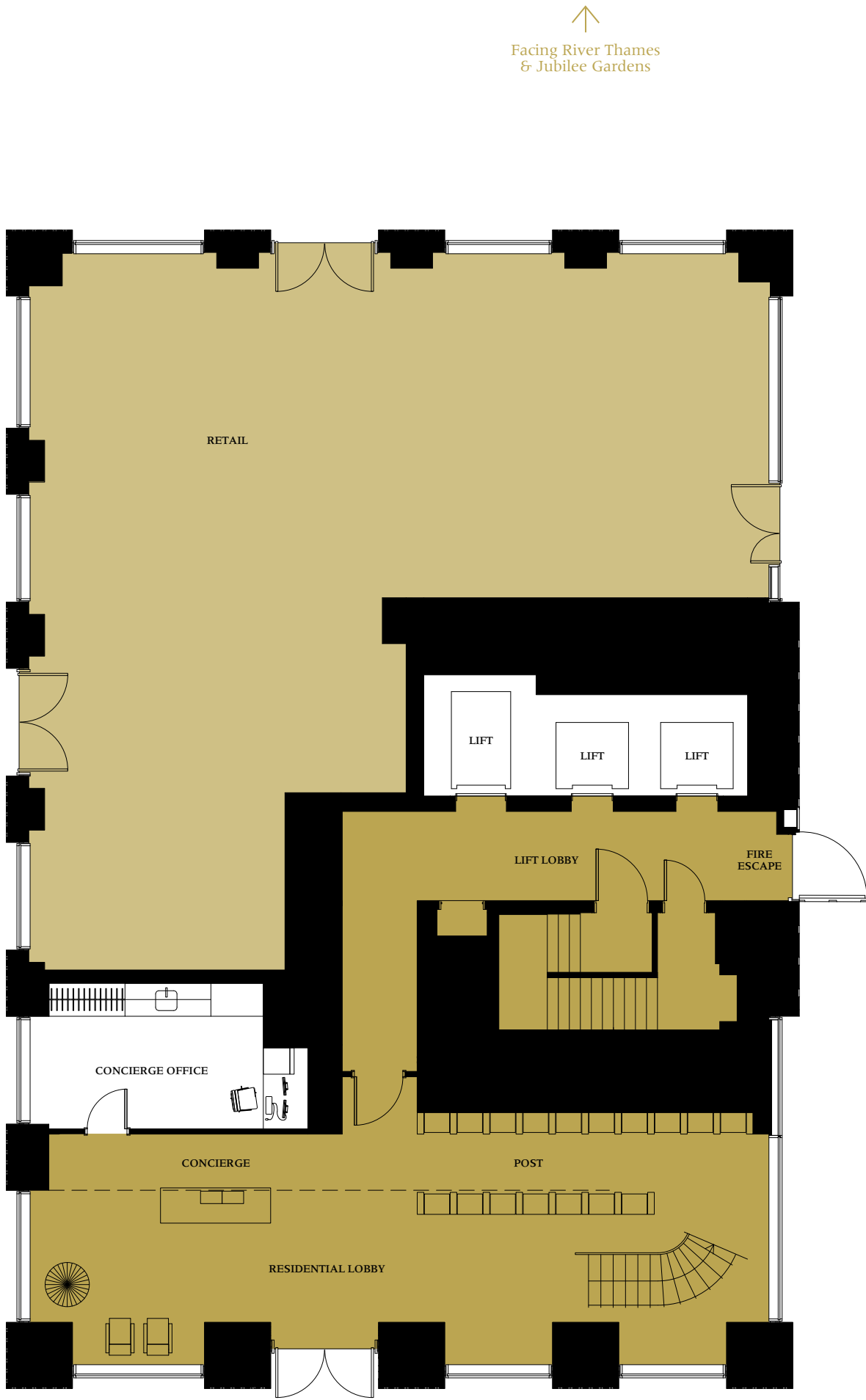
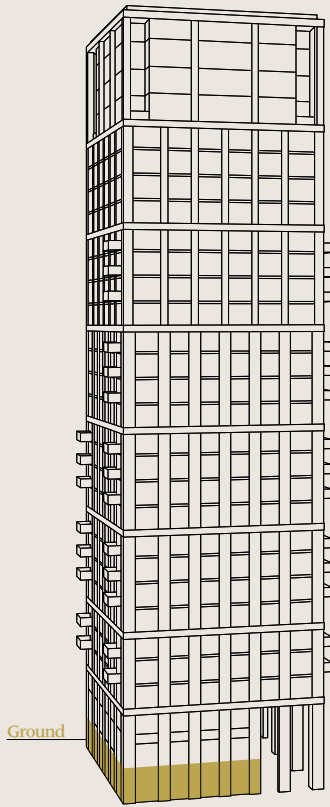
GROUND FLOOR



Computer generated image of the entrance lobby



Floorplans shown for Thirty Casson Square are approximate measurements only. Floorplans are not to scale. Exact layout and size may vary.



- Retail Areas
- Residential Access



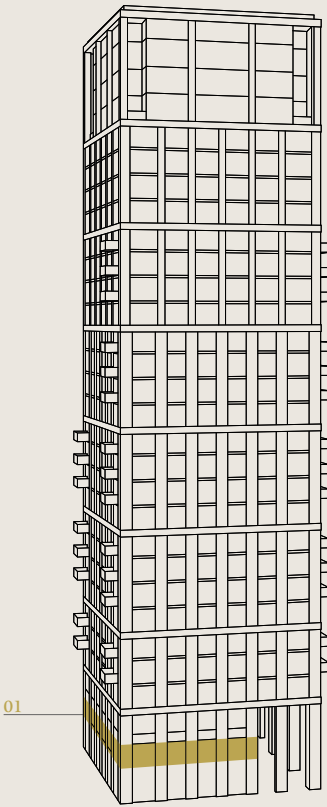
LEVEL 1



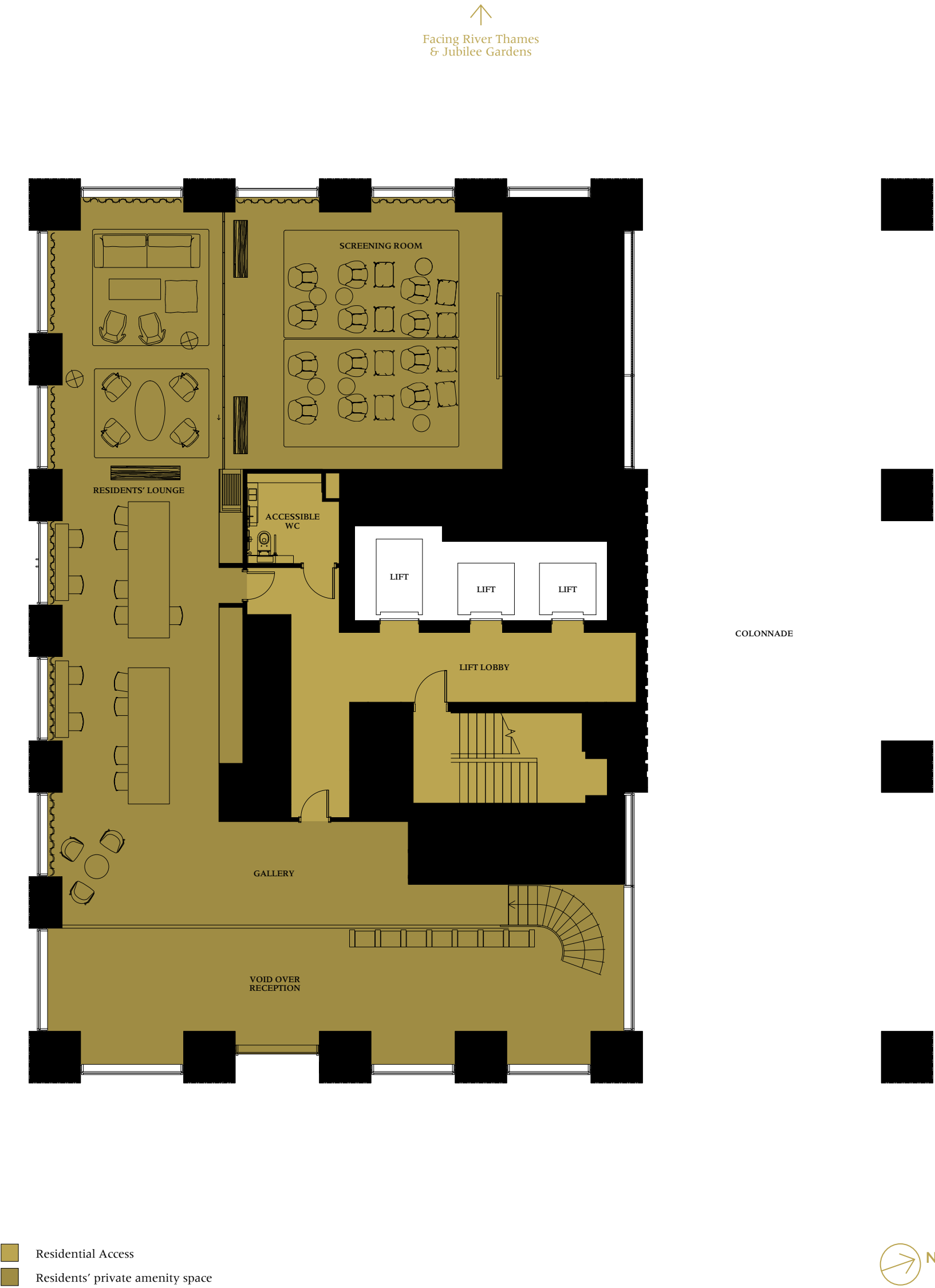
Computer generated image of the residents' lounge and screening room is indicative only



Floorplans shown for Thirty Casson Square are approximate measurements only. Floorplans are not to scale. Exact layout and size may vary.



01



- Residential Access
- Residents' private amenity space

LEVEL 2

ONE BEDROOM APARTMENTS

Apartment Type I		
Apartment No.	203	
Floor	2	
Apartment Area	49.7 sq m	534 sq ft
Living/Kitchen	5.69m x 5.28m	18'07" x 17'03"
Master Bedroom	4.09m x 2.75m	13'05" x 9'00"
Balcony Area	Juliette Balcony	

Apartment Type J		
Apartment No.	204	
Floor	2	
Apartment Area	59.6 sq m	641 sq ft
Living/Kitchen	7.68m x 3.97m	25'02" x 13'00"
Master Bedroom	3.44m x 3.83m	11'03" x 12'06"
Balcony Area	0.9 sq m	10 sq ft

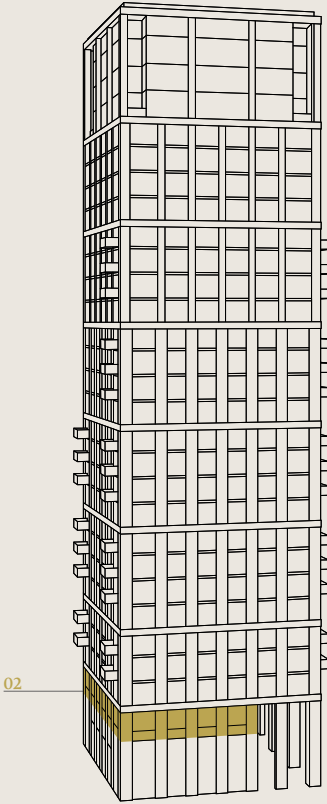
Apartment Type U		
Apartment No.	201	
Floor	2	
Apartment Area	55.9 sq m	601 sq ft
Living/Kitchen	4.35m x 7.11m	14'03" x 23'04"
Master Bedroom	3.75m x 3.06m	12'03" x 10'00"
Balcony Area	Juliette Balcony	

Apartment Type V		
Apartment No.	202	
Floor	2	
Apartment Area	58.4 sq m	628 sq ft
Living/Kitchen	5.44m x 8.26m	17'10" x 27'01"
Master Bedroom	3.81m x 3.07m	12'05" x 10'00"
Balcony Area	0.9 sq m	10 sq ft

Apartment Type W		
Apartment No.	205	
Floor	2	
Apartment Area	72.6 sq m	781 sq ft
Living/Kitchen	4.71m x 9.06m	15'05" x 29'08"
Master Bedroom	3.42m x 9.29m	11'02" x 30'05"
Balcony Area	Juliette Balcony	



Floorplans shown for Thirty Casson Square are approximate measurements only. Floorplans are not to scale. Exact layout and size may vary.



LEVEL 3

STUDIOS

Apartment Type D		
Apartment No.	301	
Floor	3	
Apartment Area	36.8 sq m	396 sq ft
Living/Bedroom	6.80m x 4.10m	22'03" x 13'05"
Balcony Area	Juliette Balcony	

Apartment Type K		
Apartment No.	308	
Floor	3	
Apartment Area	36.6 sq m	394 sq ft
Living/Bedroom	6.36m x 4.30m	20'10" x 14'01"
Balcony Area	Juliette Balcony	

ONE BEDROOM APARTMENTS

Apartment Type E		
Apartment No.	302	
Floor	3	
Apartment Area	59.6 sq m	641 sq ft
Living/Kitchen	7.68m x 4.10m	25'02" x 13'05"
Master Bedroom	3.44m x 3.83m	11'03" x 12'06"
Balcony Area	0.9 sq m	10 sq ft

Apartment Type F		
Apartment No.	303	
Floor	3	
Apartment Area	50.7 sq m	546 sq ft
Living/Kitchen	5.69m x 4.58m	18'07" x 15'00"
Master Bedroom	4.09m x 3.80m	13'05" x 12'05"
Balcony Area	Juliette Balcony	

Apartment Type I		
Apartment No.	306	
Floor	3	
Apartment Area	49.7 sq m	534 sq ft
Living/Kitchen	5.69m x 5.28m	18'07" x 17'03"
Master Bedroom	4.09m x 2.75m	13'05" x 9'00"
Balcony Area	Juliette Balcony	

Apartment Type J		
Apartment No.	307	
Floor	3	
Apartment Area	59.6 sq m	641 sq ft
Living/Kitchen	7.68m x 3.97m	25'02" x 13'00"
Master Bedroom	3.44m x 3.83m	11'03" x 12'06"
Balcony Area	0.9 sq m	10 sq ft

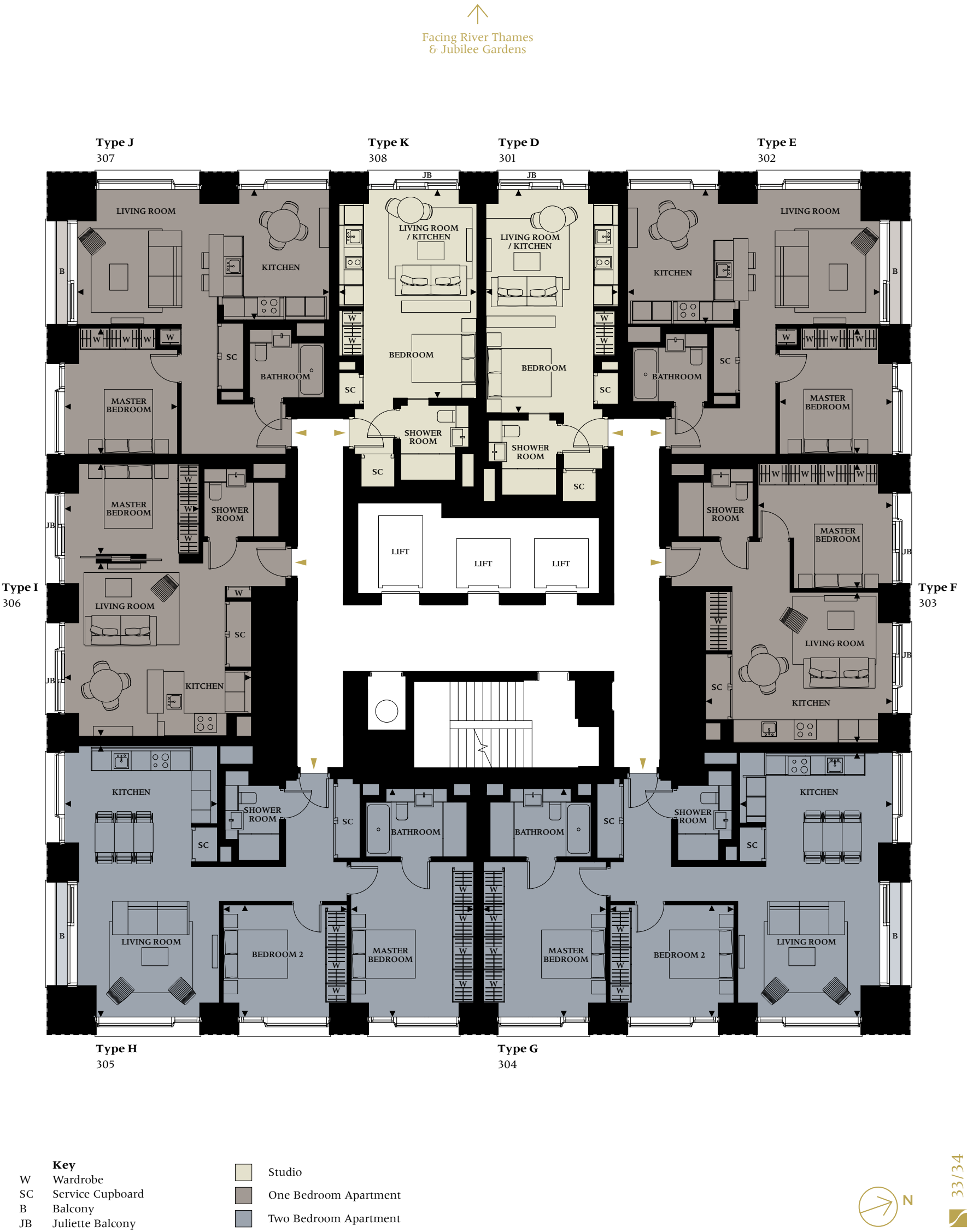
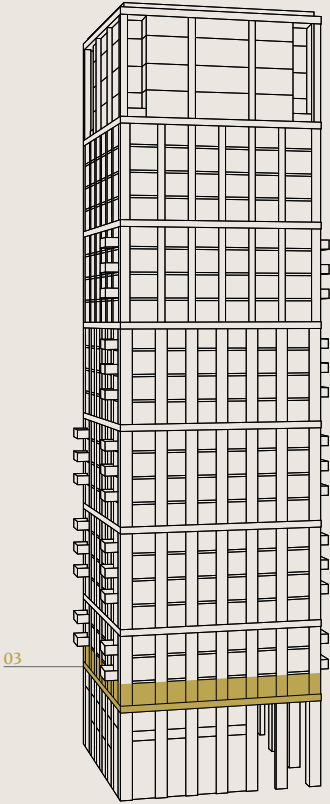
TWO BEDROOM APARTMENTS

Apartment Type G		
Apartment No.	304	
Floor	3	
Apartment Area	90.1 sq m	969 sq ft
Living/Kitchen	4.65m x 8.06m	15'03" x 26'05"
Master Bedroom Suite	3.74m x 6.96m	12'03" x 22'11"
Bedroom 2	3.77m x 3.42m	12'04" x 11'02"
Balcony Area	0.9 sq m	10 sq ft

Apartment Type H		
Apartment No.	305	
Floor	3	
Apartment Area	91.2 sq m	981 sq ft
Living/Kitchen	4.65m x 8.26m	15'03" x 27'01"
Master Bedroom Suite	3.74m x 6.96m	12'03" x 22'11"
Bedroom 2	3.77m x 3.42m	12'04" x 11'02"
Balcony Area	0.9 sq m	10 sq ft



Floorplans shown for Thirty Casson Square are approximate measurements only. Floorplans are not to scale. Exact layout and size may vary.



LEVELS 4,5

STUDIOS

Apartment Type D			
Apartment No.	401	501	
Floor	4	5	
Apartment Area	36.8 sq m	396 sq ft	
Living/Bedroom	6.80m x 4.10m	22'03" x 13'05"	
Balcony Area	Juliette Balcony		

Apartment Type K			
Apartment No.	408	508	
Floor	4	5	
Apartment Area	36.6 sq m	394 sq ft	
Living/Bedroom	6.36m x 4.30m	20'10" x 14'01"	
Balcony Area	Juliette Balcony		

ONE BEDROOM APARTMENTS

Apartment Type E			
Apartment No.	402	502	
Floor	4	5	
Apartment Area	59.6 sq m	641 sq ft	
Living/Kitchen	7.68m x 4.10m	25'02" x 13'05"	
Master Bedroom	3.44m x 3.83m	11'03" x 12'06"	
Balcony Area	6.2 sq m	67 sq ft	

Apartment Type F			
Apartment No.	403	503	
Floor	4	5	
Apartment Area	50.7 sq m	546 sq ft	
Living/Kitchen	5.69m x 4.58m	18'07" x 15'00"	
Master Bedroom	4.09m x 3.80m	13'05" x 12'05"	
Balcony Area	Juliette Balcony		

Apartment Type I			
Apartment No.	406	506	
Floor	4	5	
Apartment Area	49.7 sq m	534 sq ft	
Living/Kitchen	5.69m x 5.28m	18'07" x 17'03"	
Master Bedroom	4.09m x 2.75m	13'05" x 9'00"	
Balcony Area	Juliette Balcony		

Apartment Type J			
Apartment No.	407	507	
Floor	4	5	
Apartment Area	59.6 sq m	641 sq ft	
Living/Kitchen	7.68m x 3.97m	25'02" x 13'00"	
Master Bedroom	3.44m x 3.83m	11'03" x 12'06"	
Balcony Area	6.2 sq m	67 sq ft	

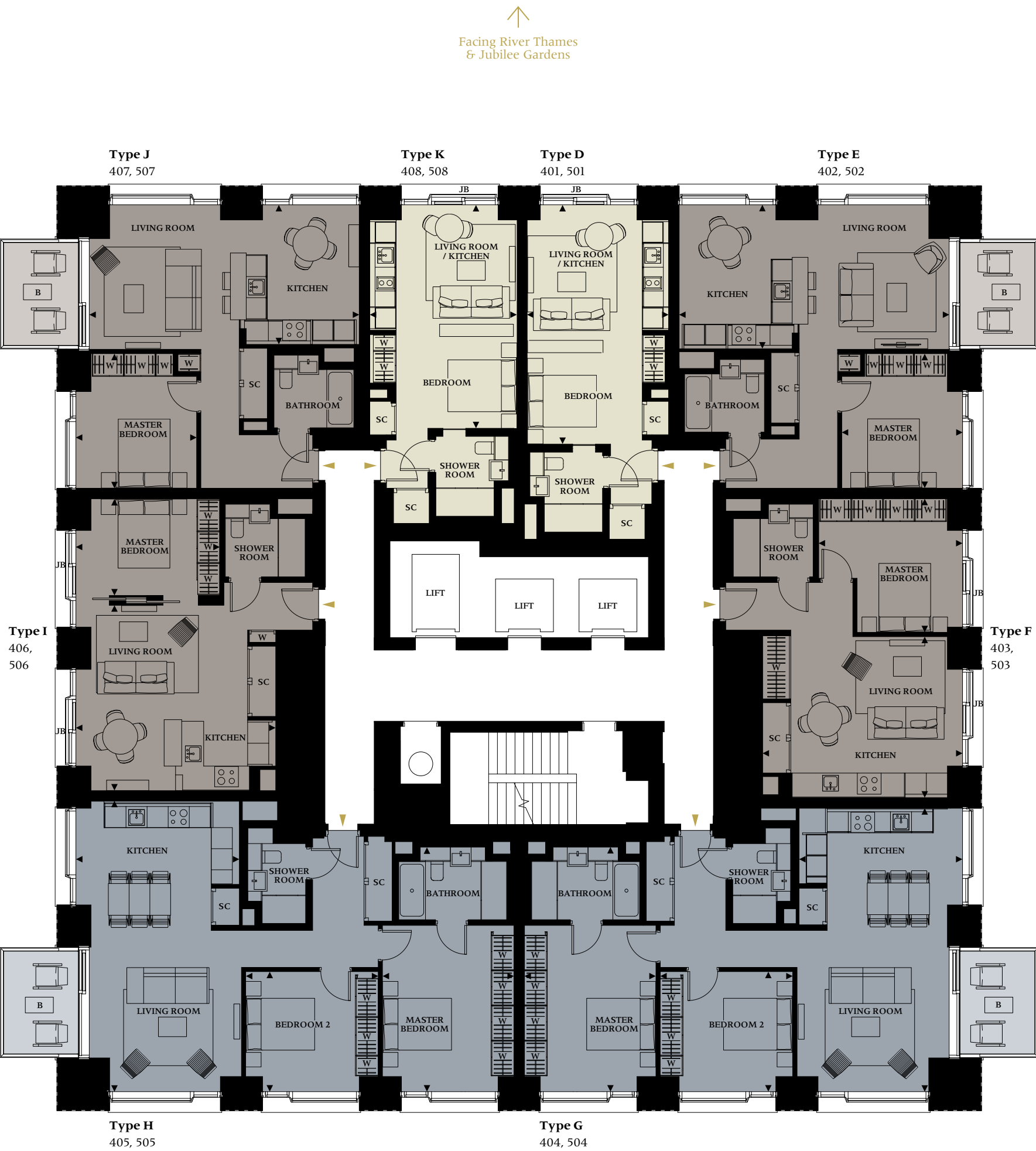
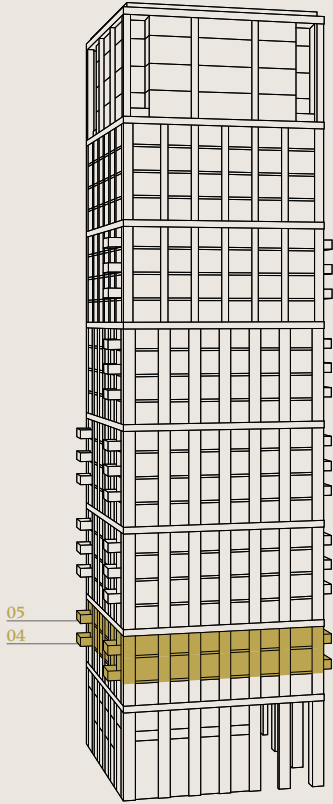
TWO BEDROOM APARTMENTS

Apartment Type G			
Apartment No.	404	504	
Floor	4	5	
Apartment Area	90.1 sq m	969 sq ft	
Living/Kitchen	4.65m x 8.06m	15'03" x 26'05"	
Master Bedroom Suite	3.74m x 6.96m	12'03" x 22'11"	
Bedroom 2	3.77m x 3.42m	12'04" x 11'02"	
Balcony Area	6.2 sq m	67 sq ft	

Apartment Type H			
Apartment No.	405	505	
Floor	4	5	
Apartment Area	91.2 sq m	981 sq ft	
Living/Kitchen	4.65m x 8.26m	15'03" x 27'01"	
Master Bedroom Suite	3.74m x 6.96m	12'03" x 22'11"	
Bedroom 2	3.77m x 3.42m	12'04" x 11'02"	
Balcony Area	6.2 sq m	67 sq ft	



Floorplans shown for Thirty Casson Square are approximate measurements only. Floorplans are not to scale. Exact layout and size may vary.



- Key**

 - W Wardrobe
 - SC Service Cupboard
 - B Balcony
 - JB Juliette Balcony
- Studio
 - One Bedroom Apartment
 - Two Bedroom Apartment

LEVELS 6, 10

STUDIOS

Apartment Type D			
Apartment No.	601	1001	
Floor	6	10	
Apartment Area	36.9 sq m	397 sq ft	
Living/Bedroom	6.80m x 4.10m	22'03" x 13'05"	
Balcony Area	Juliette Balcony		

Apartment Type K			
Apartment No.	608	1008	
Floor	6	10	
Apartment Area	36.7 sq m	395 sq ft	
Living/Bedroom	6.36m x 4.30m	20'10" x 14'01"	
Balcony Area	Juliette Balcony		

ONE BEDROOM APARTMENTS

Apartment Type E			
Apartment No.	602	1002	
Floor	6	10	
Apartment Area	59.9 sq m	644 sq ft	
Living/Kitchen	7.68m x 4.10m	25'02" x 13'05"	
Master Bedroom	3.44m x 3.83m	11'03" x 12'06"	
Balcony Area	1.0 sq m	11 sq ft	

Apartment Type F			
Apartment No.	603	1003	
Floor	6	10	
Apartment Area	51.0 sq m	548 sq ft	
Living/Kitchen	5.69m x 4.58m	18'07" x 15'00"	
Master Bedroom	4.09m x 3.80m	13'05" x 12'05"	
Balcony Area	Juliette Balcony		

Apartment Type I			
Apartment No.	606	1006	
Floor	6	10	
Apartment Area	50.0 sq m	537 sq ft	
Living/Kitchen	5.69m x 5.28m	18'07" x 17'03"	
Master Bedroom	4.09m x 2.75m	13'05" x 9'00"	
Balcony Area	Juliette Balcony		

Apartment Type J			
Apartment No.	607	1007	
Floor	6	10	
Apartment Area	59.9 sq m	644 sq ft	
Living/Kitchen	7.68m x 3.97m	25'02" x 13'00"	
Master Bedroom	3.44m x 3.83m	11'03" x 12'06"	
Balcony Area	1.0 sq m	11 sq ft	

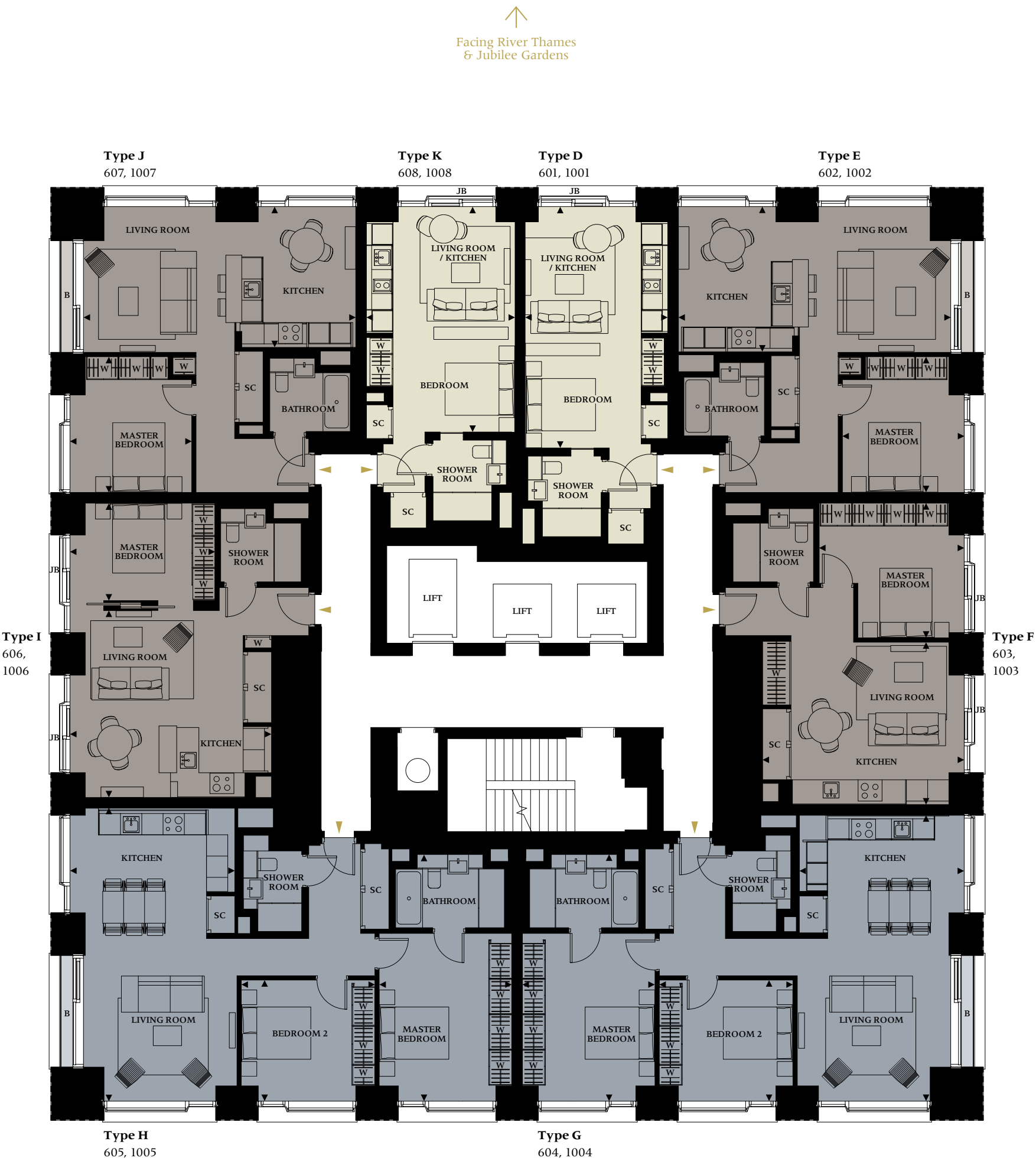
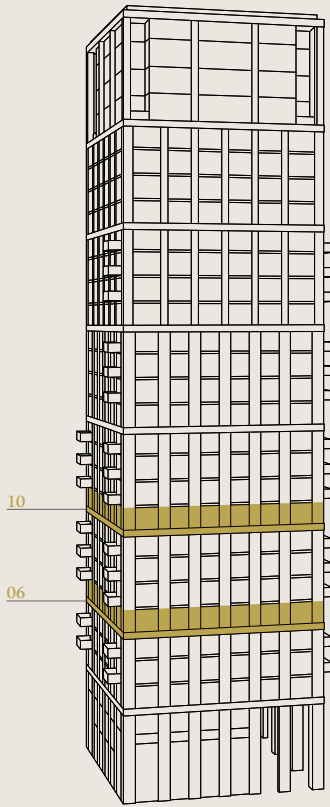
TWO BEDROOM APARTMENTS

Apartment Type G			
Apartment No.	604	1004	
Floor	6	10	
Apartment Area	90.5 sq m	974 sq ft	
Living/Kitchen	4.65m x 8.06m	15'03" x 26'05"	
Master Bedroom Suite	3.74m x 6.96m	12'03" x 22'11"	
Bedroom 2	3.77m x 3.42m	12'04" x 11'02"	
Balcony Area	1.0 sq m	11 sq ft	

Apartment Type H			
Apartment No.	605	1005	
Floor	6	10	
Apartment Area	91.6 sq m	986 sq ft	
Living/Kitchen	4.65m x 8.26m	15'03" x 27'01"	
Master Bedroom Suite	3.74m x 6.96m	12'03" x 22'11"	
Bedroom 2	3.77m x 3.42m	12'04" x 11'02"	
Balcony Area	1.0 sq m	11 sq ft	



Floorplans shown for Thirty Casson Square are approximate measurements only. Floorplans are not to scale. Exact layout and size may vary.



LEVELS 7, 8, 9, 11, 12, 13

STUDIOS

Apartment Type D						
Apartment No.	701	801	901	1101	1201	1301
Floor	7	8	9	11	12	13
Apartment Area	36.9 sq m			397 sq ft		
Living/Bedroom	6.80m x 4.10m			22'03" x 13'05"		
Balcony Area	Juliette Balcony					

Apartment Type K						
Apartment No.	708	808	908	1108	1208	1308
Floor	7	8	9	11	12	13
Apartment Area	36.7 sq m			395 sq ft		
Living/Bedroom	6.36m x 4.30m			20'10" x 14'01"		
Balcony Area	Juliette Balcony					

ONE BEDROOM APARTMENTS

Apartment Type E						
Apartment No.	702	802	902	1102	1202	1302
Floor	7	8	9	11	12	13
Apartment Area	59.9 sq m		644 sq ft			
Living/Kitchen	7.68m x 4.10m		25'02" x 13'05"			
Master Bedroom	3.44m x 3.83m		11'03" x 12'06"			
Balcony Area	6.5 sq m		70 sq ft			

Apartment Type F						
Apartment No.	703	803	903	1103	1203	1303
Floor	7	8	9	11	12	13
Apartment Area	51.0 sq m			548 sq ft		
Living/Kitchen	5.69m x 4.58m			18'07" x 15'00"		
Master Bedroom	4.09m x 3.80m			13'05" x 12'05"		
Balcony Area	Juliette Balcony					

Apartment Type I						
Apartment No.	706	806	906	1106	1206	1306
Floor	7	8	9	11	12	13
Apartment Area	50.0 sq m			537 sq ft		
Living/Kitchen	5.69m x 5.28m			18'07" x 17'03"		
Master Bedroom	4.09m x 2.75m			13'05" x 9'00"		
Balcony Area	Juliette Balcony					

Apartment Type J						
Apartment No.	707	807	907	1107	1207	1307
Floor	7	8	9	11	12	13
Apartment Area	59.9 sq m		644 sq ft			
Living/Kitchen	7.68m x 3.97m		25'02" x 13'00"			
Master Bedroom	3.44m x 3.83m		11'03" x 12'06"			
Balcony Area	6.5 sq m		70 sq ft			

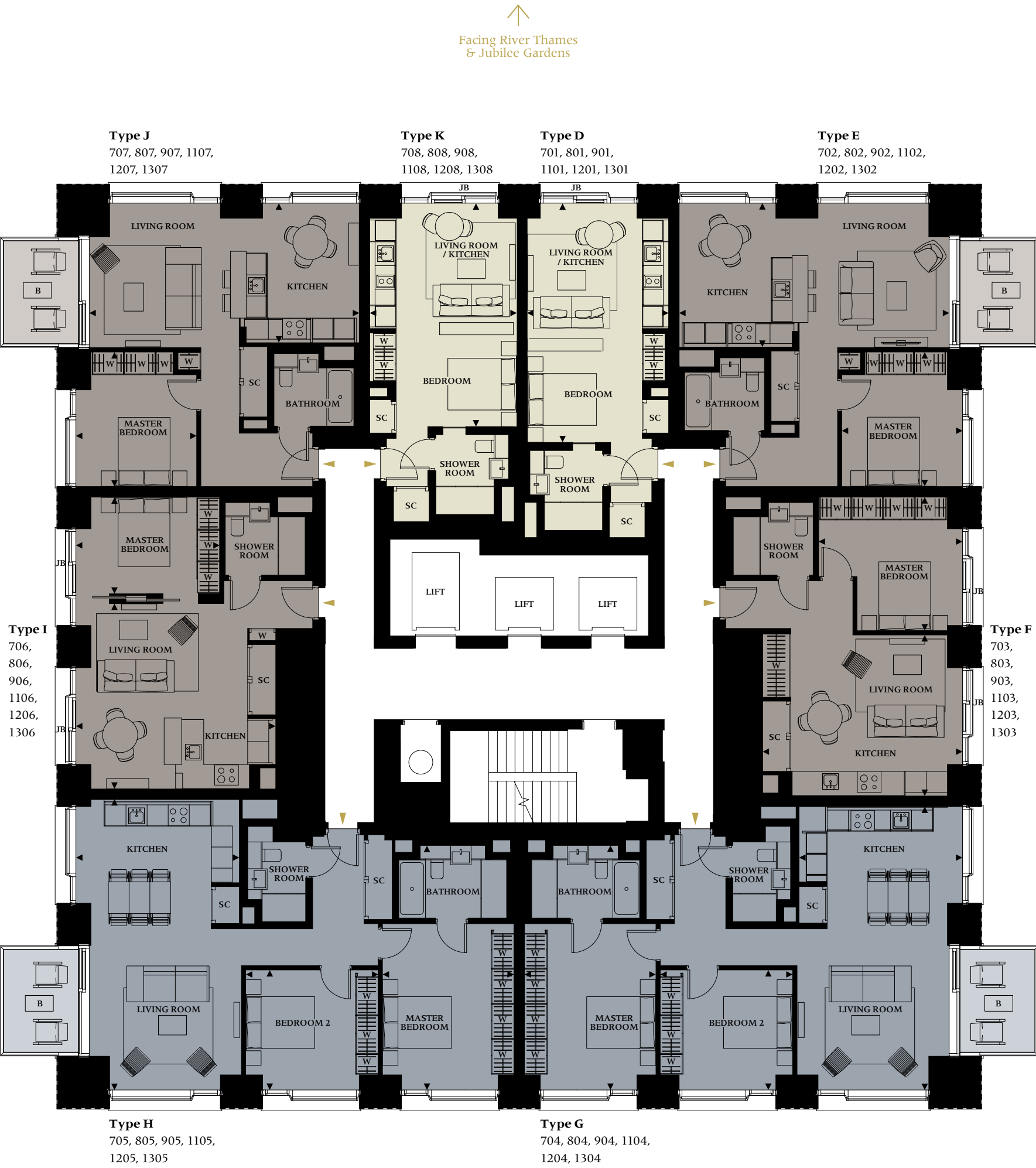
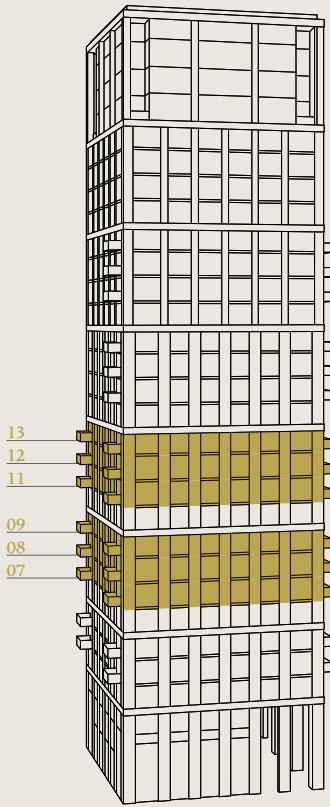
TWO BEDROOM APARTMENTS

Apartment Type G						
Apartment No.	704	804	904	1104	1204	1304
Floor	7	8	9	11	12	13
Apartment Area	90.5 sq m		974 sq ft			
Living/Kitchen	4.65m x 8.06m		15'03" x 26'05"			
Master Bedroom Suite	3.74m x 6.96m		12'03" x 22'11"			
Bedroom 2	3.77m x 3.42m		12'04" x 11'02"			
Balcony Area	6.5 sq m		70 sq ft			

Apartment Type H						
Apartment No.	705	805	905	1105	1205	1305
Floor	7	8	9	11	12	13
Apartment Area	91.6 sq m		986 sq ft			
Living/Kitchen	4.65m x 8.26m		15'03" x 27'01"			
Master Bedroom Suite	3.74m x 6.96m		12'03" x 22'11"			
Bedroom 2	3.77m x 3.42m		12'04" x 11'02"			
Balcony Area	6.5 sq m		70 sq ft			



Floorplans shown for Thirty Casson Square are approximate measurements only. Floorplans are not to scale. Exact layout and size may vary.



LEVEL 14

STUDIOS

Apartment Type D		
Apartment No.	1401	
Floor	14	
Apartment Area	36.9 sq m	397 sq ft
Living/Bedroom	6.80m x 4.10m	22'03" x 13'05"
Balcony Area	Juliette Balcony	

Apartment Type K		
Apartment No.	1408	
Floor	14	
Apartment Area	36.7 sq m	395 sq ft
Living/Bedroom	6.36m x 4.30m	20'10" x 14'01"
Balcony Area	Juliette Balcony	

ONE BEDROOM APARTMENTS

Apartment Type E		
Apartment No.	1402	
Floor	14	
Apartment Area	59.9 sq m	644 sq ft
Living/Kitchen	8.06m x 4.10m	26'05" x 13'05"
Master Bedroom	3.44m x 3.83m	11'03" x 12'06"
Balcony Area	1.0 sq m	11 sq ft

Apartment Type F		
Apartment No.	1403	
Floor	14	
Apartment Area	51.0 sq m	548 sq ft
Living/Kitchen	5.69m x 4.58m	18'07" x 15'00"
Master Bedroom	4.09m x 3.80m	13'05" x 12'05"
Balcony Area	Juliette Balcony	

Apartment Type I		
Apartment No.	1406	
Floor	14	
Apartment Area	50.0 sq m	537 sq ft
Living/Kitchen	5.69m x 5.28m	18'07" x 17'03"
Master Bedroom	4.09m x 2.75m	13'05" x 9'00"
Balcony Area	Juliette Balcony	

Apartment Type J		
Apartment No.	1407	
Floor	14	
Apartment Area	59.9 sq m	644 sq ft
Living/Kitchen	8.06m x 3.97m	26'05" x 13'00"
Master Bedroom	3.44m x 3.83m	11'03" x 12'06"
Balcony Area	1.0 sq m	11 sq ft

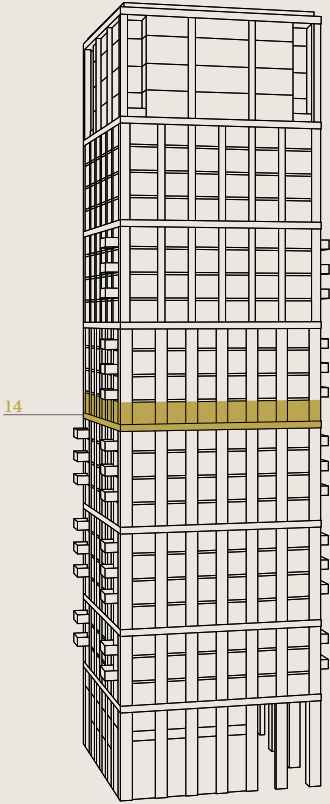
TWO BEDROOM APARTMENTS

Apartment Type G		
Apartment No.	1404	
Floor	14	
Apartment Area	90.5 sq m	974 sq ft
Living/Kitchen	4.65m x 8.06m	15'03" x 26'05"
Master Bedroom Suite	3.74m x 6.96m	12'03" x 22'11"
Bedroom 2	3.77m x 3.42m	12'04" x 11'02"
Balcony Area	1.0 sq m	11 sq ft

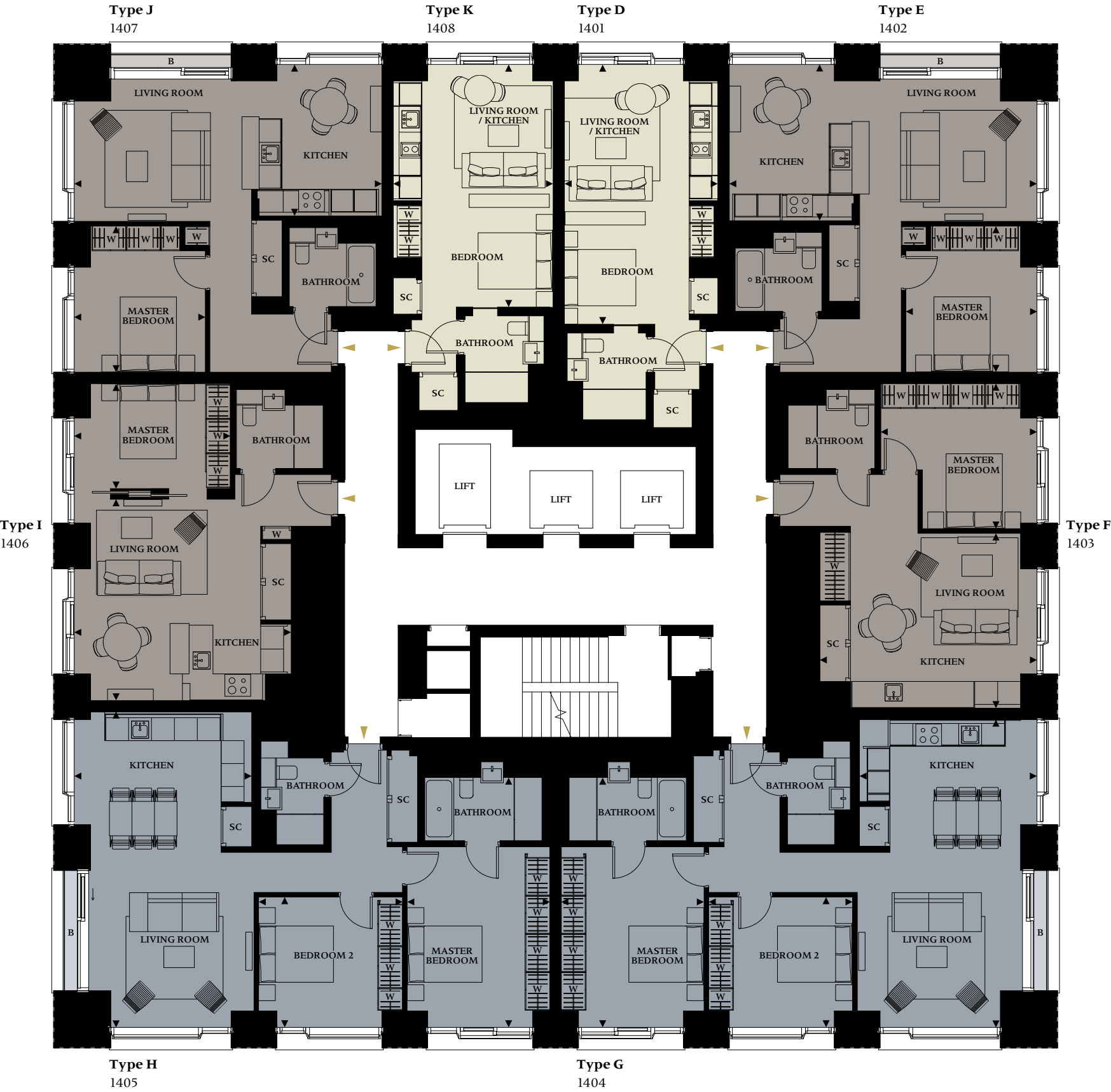
Apartment Type H		
Apartment No.	1405	
Floor	14	
Apartment Area	91.6 sq m	986 sq ft
Living/Kitchen	4.65m x 8.26m	15'03" x 27'01"
Master Bedroom Suite	3.74m x 6.96m	12'03" x 22'11"
Bedroom 2	3.77m x 3.42m	12'04" x 11'02"
Balcony Area	1.0 sq m	11 sq ft



Floorplans shown for Thirty Casson Square are approximate measurements only. Floorplans are not to scale. Exact layout and size may vary.



↑
Facing River Thames
& Jubilee Gardens



- Key**

 - W Wardrobe
 - SC Service Cupboard
 - B Balcony
 - JB Juliette Balcony
- Studio
 - One Bedroom Apartment
 - Two Bedroom Apartment



LEVEL 15

STUDIOS

Apartment Type D		
Apartment No.	1501	
Floor	15	
Apartment Area	36.9 sq m	397 sq ft
Living/Bedroom	6.80m x 4.10m	22'03" x 13'05"
Balcony Area	Juliette Balcony	

Apartment Type K		
Apartment No.	1508	
Floor	15	
Apartment Area	36.7 sq m	395 sq ft
Living/Bedroom	6.36m x 4.30m	20'10" x 14'01"
Balcony Area	Juliette Balcony	

ONE BEDROOM APARTMENTS

Apartment Type E		
Apartment No.	1502	
Floor	15	
Apartment Area	59.9 sq m	644 sq ft
Living/Kitchen	8.06m x 4.10m	26'05" x 13'05"
Master Bedroom	3.44m x 3.83m	11'03" x 12'06"
Balcony Area	6.5 sq m	70 sq ft

Apartment Type F		
Apartment No.	1503	
Floor	15	
Apartment Area	51.0 sq m	548 sq ft
Living/Kitchen	5.69m x 4.58m	18'07" x 15'00"
Master Bedroom	4.09m x 3.80m	13'05" x 12'05"
Balcony Area	Juliette Balcony	

Apartment Type I		
Apartment No.	1506	
Floor	15	
Apartment Area	50.0 sq m	537 sq ft
Living/Kitchen	5.69m x 5.28m	18'07" x 17'03"
Master Bedroom	4.09m x 2.75m	13'05" x 9'00"
Balcony Area	Juliette Balcony	

Apartment Type J		
Apartment No.	1507	
Floor	15	
Apartment Area	59.9 sq m	644 sq ft
Living/Kitchen	8.06m x 3.97m	26'05" x 13'00"
Master Bedroom	3.44m x 3.83m	11'03" x 12'06"
Balcony Area	6.5 sq m	70 sq ft

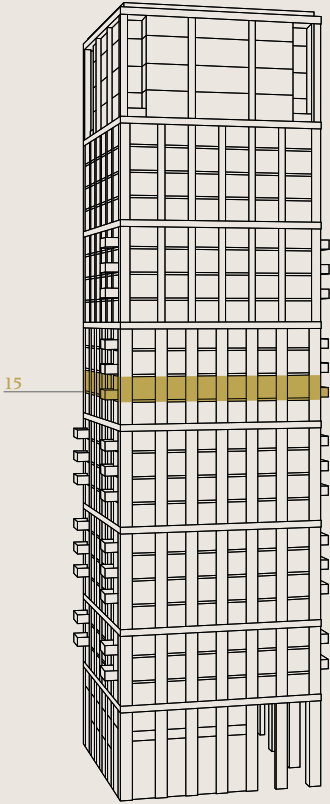
TWO BEDROOM APARTMENTS

Apartment Type G		
Apartment No.	1504	
Floor	15	
Apartment Area	90.5 sq m	974 sq ft
Living/Kitchen	4.65m x 8.06m	15'03" x 26'05"
Master Bedroom Suite	3.74m x 6.96m	12'03" x 22'11"
Bedroom 2	3.77m x 3.42m	12'04" x 11'02"
Balcony Area	6.5 sq m	70 sq ft

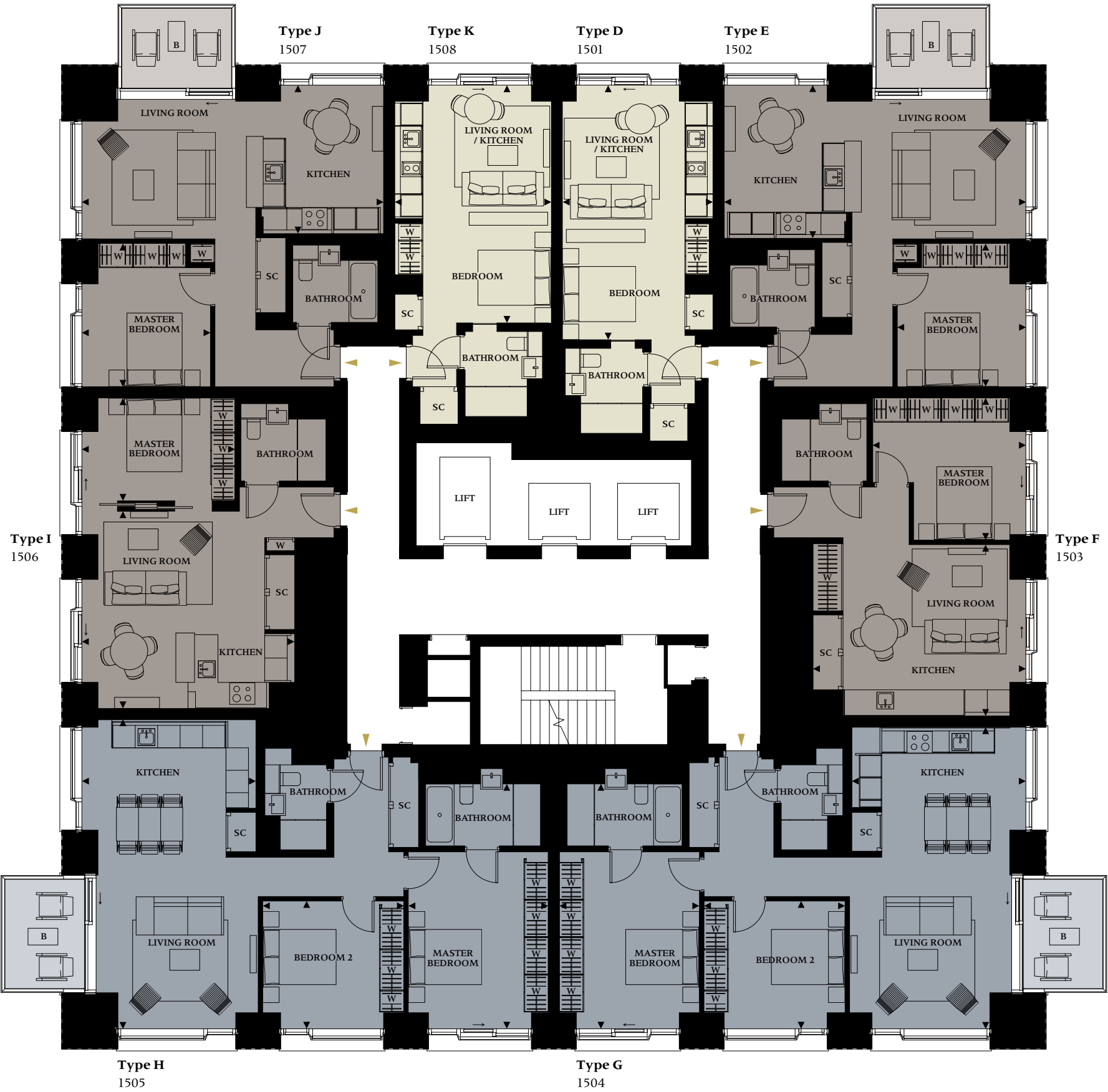
Apartment Type H		
Apartment No.	1505	
Floor	15	
Apartment Area	91.6 sq m	986 sq ft
Living/Kitchen	4.65m x 8.26m	15'03" x 27'01"
Master Bedroom Suite	3.74m x 6.96m	12'03" x 22'11"
Bedroom 2	3.77m x 3.42m	12'04" x 11'02"
Balcony Area	6.5 sq m	70 sq ft



Floorplans shown for Thirty Casson Square are approximate measurements only. Floorplans are not to scale. Exact layout and size may vary.



↑
Facing River Thames
& Jubilee Gardens



- Key**

 - W Wardrobe
 - SC Service Cupboard
 - B Balcony
 - JB Juliette Balcony
- Studio
 - One Bedroom Apartment
 - Two Bedroom Apartment



LEVELS 16, 17

ONE BEDROOM APARTMENTS

Apartment Type F			
Apartment No.	1602	1702	
Floor	16	17	
Apartment Area	51.0 sq m	548 sq ft	
Living/Kitchen	5.69m x 4.58m	18'07" x 15'00"	
Master Bedroom	4.09m x 3.80m	13'05" x 12'05"	
Balcony Area	Juliette Balcony		

Apartment Type I			
Apartment No.	1605	1705	
Floor	16	17	
Apartment Area	50.0 sq m	537 sq ft	
Living/Kitchen	5.69m x 5.28m	18'07" x 17'03"	
Master Bedroom	4.09m x 2.75m	13'05" x 9'00"	
Balcony Area	Juliette Balcony		

TWO BEDROOM APARTMENTS

Apartment Type G			
Apartment No.	1603	1703	
Floor	16	17	
Apartment Area	90.5 sq m	974 sq ft	
Living/Kitchen	4.65m x 8.06m	15'03" x 26'05"	
Master Bedroom Suite	3.74m x 6.96m	12'03" x 22'11"	
Bedroom 2	3.77m x 3.42m	12'04" x 11'02"	
Balcony Area	6.5 sq m	70 sq ft	

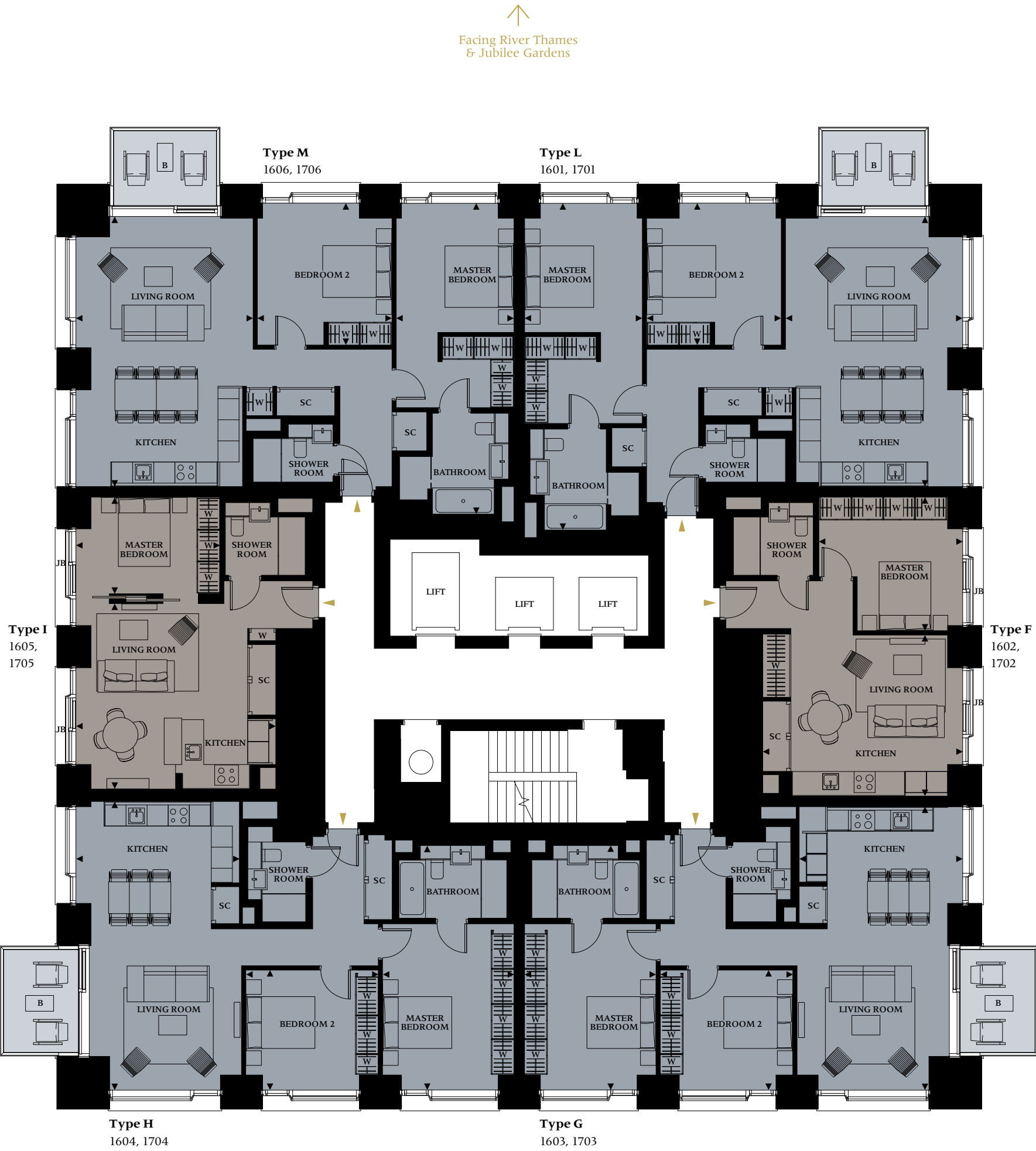
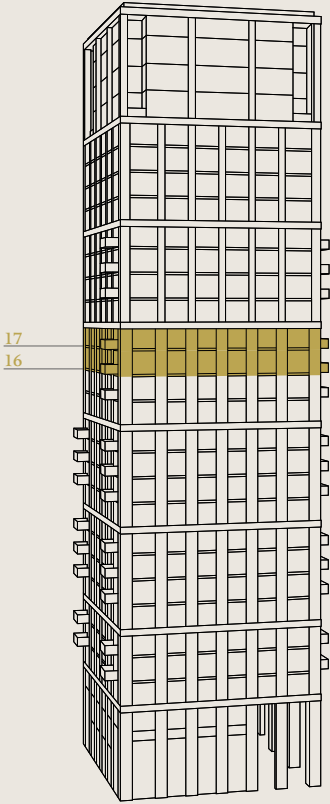
Apartment Type H			
Apartment No.	1604	1704	
Floor	16	17	
Apartment Area	91.4 sq m	983 sq ft	
Living/Kitchen	4.65m x 8.26m	15'03" x 27'01"	
Master Bedroom Suite	3.74m x 6.96m	12'03" x 22'11"	
Bedroom 2	3.77m x 3.42m	12'04" x 11'02"	
Balcony Area	6.5 sq m	70 sq ft	

Apartment Type L			
Apartment No.	1601	1701	
Floor	16	17	
Apartment Area	102.6 sq m	1,104 sq ft	
Living/Kitchen	5.04m x 7.68m	16'06" x 25'02"	
Master Bedroom Suite	3.35m x 9.30m	10'11" x 30'05"	
Bedroom 2	3.83m x 4.04m	12'06" x 13'02"	
Balcony Area	6.5 sq m	70 sq ft	

Apartment Type M			
Apartment No.	1606	1706	
Floor	16	17	
Apartment Area	100.1 sq m	1,077 sq ft	
Living/Kitchen	5.04m x 7.68m	16'06" x 25'02"	
Master Bedroom Suite	3.35m x 8.85m	10'11" x 29'00"	
Bedroom 2	3.83m x 4.04m	12'06" x 13'02"	
Balcony Area	6.5 sq m	70 sq ft	



Floorplans shown for Thirty Casson Square are approximate measurements only. Floorplans are not to scale. Exact layout and size may vary.



LEVEL 18

ONE BEDROOM APARTMENTS

Apartment Type F		
Apartment No.	1802	
Floor	18	
Apartment Area	50.9 sq m	548 sq ft
Living/Kitchen	5.69m x 4.58m	18'07" x 15'00"
Master Bedroom	4.09m x 3.80m	13'05" x 12'05"
Balcony Area	Juliette Balcony	

Apartment Type I		
Apartment No.	1805	
Floor	18	
Apartment Area	50.0 sq m	538 sq ft
Living/Kitchen	5.69m x 5.28m	18'07" x 17'03"
Master Bedroom	4.09m x 2.75m	13'05" x 9'00"
Balcony Area	Juliette Balcony	

TWO BEDROOM APARTMENTS

Apartment Type G		
Apartment No.	1803	
Floor	18	
Apartment Area	92.0 sq m	987 sq ft
Living/Kitchen	4.65m x 8.06m	15'03" x 26'05"
Master Bedroom Suite	3.74m x 6.96m	12'03" x 22'11"
Bedroom 2	3.77m x 3.42m	12'04" x 11'02"
Balcony Area	1.1 sq m	12 sq ft

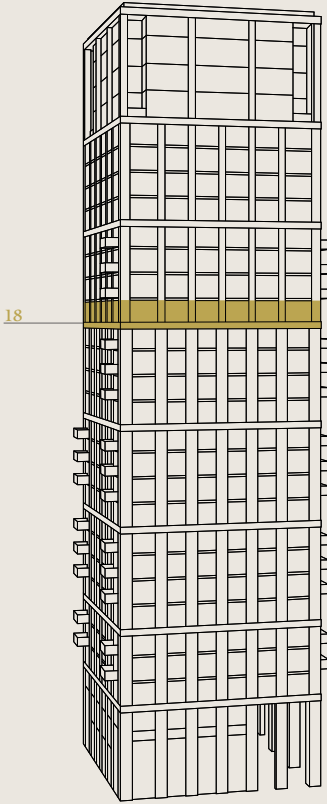
Apartment Type H		
Apartment No.	1804	
Floor	18	
Apartment Area	92.7 sq m	998 sq ft
Living/Kitchen	4.65m x 8.26m	15'03" x 27'01"
Master Bedroom Suite	3.74m x 6.96m	12'03" x 22'11"
Bedroom 2	3.77m x 3.42m	12'04" x 11'02"
Balcony Area	1.1 sq m	12 sq ft

Apartment Type L		
Apartment No.	1801	
Floor	18	
Apartment Area	103.8 sq m	1,116 sq ft
Living/Kitchen	5.04m x 7.68m	16'06" x 25'02"
Master Bedroom Suite	3.35m x 9.30m	10'11" x 30'05"
Bedroom 2	3.83m x 4.04m	12'06" x 13'02"
Balcony Area	1.1 sq m	12 sq ft

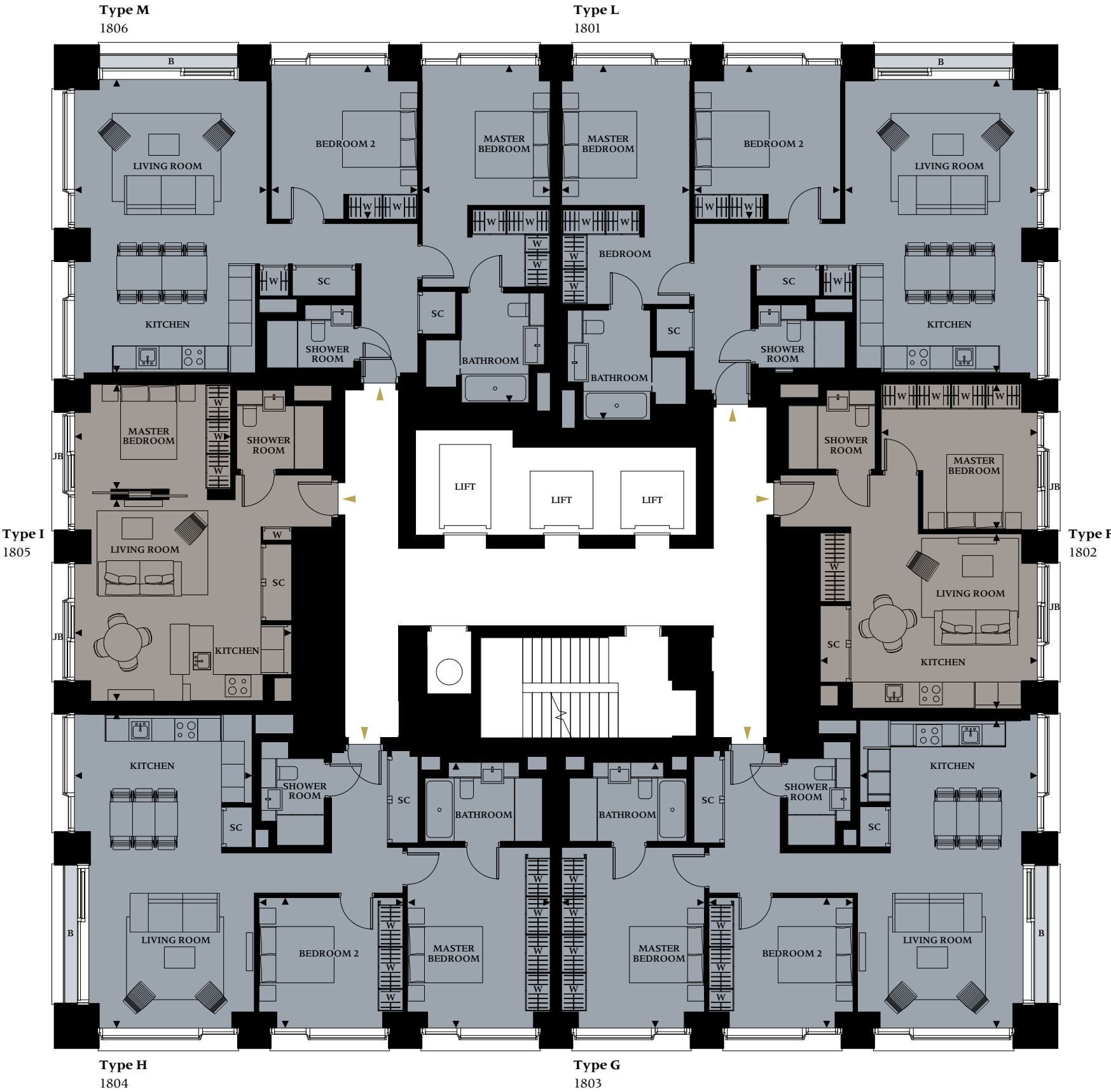
Apartment Type M		
Apartment No.	1806	
Floor	18	
Apartment Area	101.3 sq m	1,090 sq ft
Living/Kitchen	5.04m x 7.68m	16'06" x 25'02"
Master Bedroom Suite	3.35m x 8.85m	10'11" x 29'00"
Bedroom 2	3.83m x 4.04m	12'06" x 13'02"
Balcony Area	1.1 sq m	12 sq ft



Floorplans shown for Thirty Casson Square are approximate measurements only. Floorplans are not to scale. Exact layout and size may vary.



↑
Facing River Thames
& Jubilee Gardens



- Key**

 - W Wardrobe
 - SC Service Cupboard
 - B Balcony
 - JB Juliette Balcony
- One Bedroom Apartment
 - Two Bedroom Apartment



LEVELS 19, 20, 21

ONE BEDROOM APARTMENTS

Apartment Type F				
Apartment No.	1902	2002	2102	
Floor	19	20	21	
Apartment Area		50.9 sq m		548 sq ft
Living/Kitchen		5.69m x 4.58m		18'07" x 15'00"
Master Bedroom		4.09m x 3.80m		13'05" x 12'05"
Balcony Area		Juliette Balcony		

Apartment Type I				
Apartment No.	1905	2005	2105	
Floor	19	20	21	
Apartment Area		50.0 sq m		538 sq ft
Living/Kitchen		5.69m x 5.28m		18'07" x 17'03"
Master Bedroom		4.09m x 2.75m		13'05" x 9'00"
Balcony Area		Juliette Balcony		

TWO BEDROOM APARTMENTS

Apartment Type G				
Apartment No.	1903	2003	2103	
Floor	19	20	21	
Apartment Area	91.8 sq m		987 sq ft	
Living/Kitchen	4.65m x 8.06m		15'03" x 26'05"	
Master Bedroom Suite	3.74m x 6.96m		12'03" x 22'11"	
Bedroom 2	3.77m x 3.42m		12'04" x 11'02"	
Balcony Area	7.5 sq m		81 sq ft	

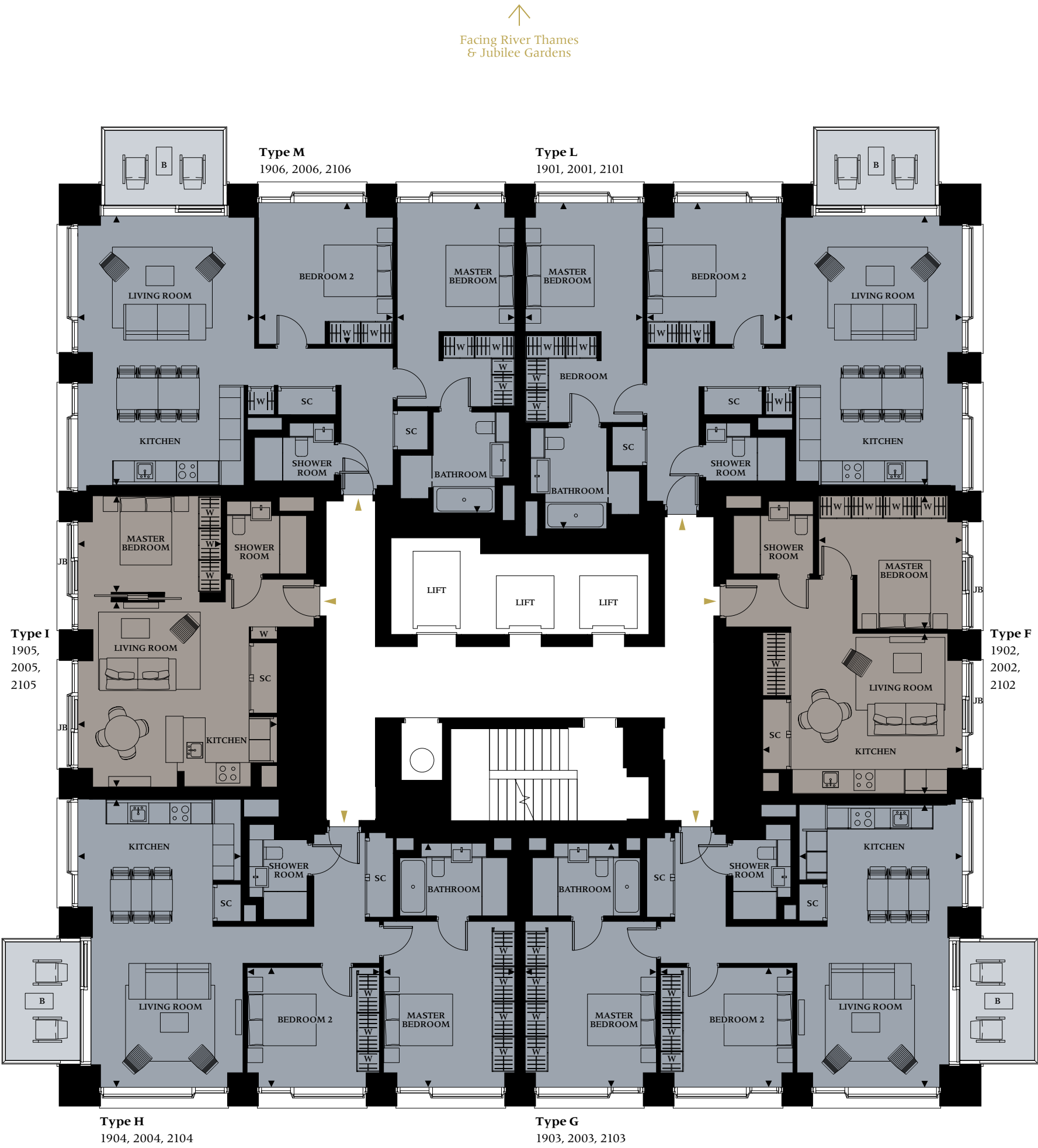
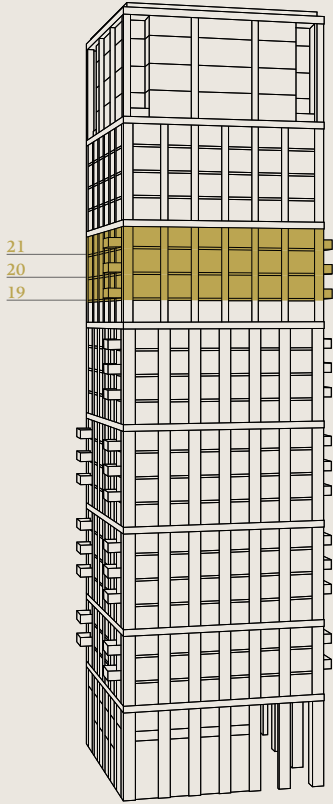
Apartment Type H				
Apartment No.	1904	2004	2104	
Floor	19	20	21	
Apartment Area	92.7 sq m		998 sq ft	
Living/Kitchen	4.65m x 8.26m		15'03" x 27'01"	
Master Bedroom Suite	3.74m x 6.96m		12'03" x 22'11"	
Bedroom 2	3.77m x 3.42m		12'04" x 11'02"	
Balcony Area	7.5 sq m		81 sq ft	

Apartment Type L				
Apartment No.	1901	2001	2101	
Floor	19	20	21	
Apartment Area	103.8 sq m		1,116 sq ft	
Living/Kitchen	5.04m x 7.68m		16'06" x 25'02"	
Master Bedroom Suite	3.35m x 9.30m		10'11" x 30'05"	
Bedroom 2	3.83m x 4.04m		12'06" x 13'02"	
Balcony Area	7.5 sq m		81 sq ft	

Apartment Type M				
Apartment No.	1906	2006	2106	
Floor	19	20	21	
Apartment Area	101.3 sq m		1,090 sq ft	
Living/Kitchen	5.04m x 7.68m		16'06" x 25'02"	
Master Bedroom Suite	3.35m x 8.85m		10'11" x 29'00"	
Bedroom 2	3.83m x 4.04m		12'06" x 13'02"	
Balcony Area	7.5 sq m		81 sq ft	



Floorplans shown for Thirty Casson Square are approximate measurements only. Floorplans are not to scale. Exact layout and size may vary.



- Key**

 - W Wardrobe
 - SC Service Cupboard
 - B Balcony
 - JB Juliette Balcony
- One Bedroom Apartment
 - Two Bedroom Apartment



LEVELS 22, 23, 24, 25

TWO BEDROOM APARTMENTS

Apartment Type P			
Apartment No.	2202, 2302, 2402, 2502		
Floor	22	23	24 25
Apartment Area	96.0 sq m	1,033 sq ft	
Living/Kitchen	4.70m x 8.91m	15'05" x 29'02"	
Master Bedroom Suite	7.06m x 3.75m	23'02" x 12'03"	
Bedroom 2	3.82m x 3.44m	12'06" x 11'03"	
Balcony Area	1.1 sq m	12 sq ft	

Apartment Type Q			
Apartment No.	2203, 2303, 2403, 2503		
Floor	22	23	24 25
Apartment Area	96.0 sq m	1,033 sq ft	
Living/Kitchen	4.70m x 8.91m	15'05" x 29'02"	
Master Bedroom Suite	7.06m x 3.75m	23'02" x 12'03"	
Bedroom 2	3.82m x 3.44m	12'06" x 11'03"	
Balcony Area	1.1 sq m	12 sq ft	

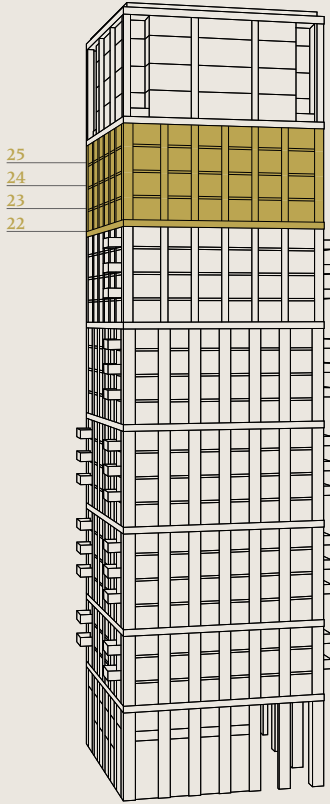
THREE BEDROOM APARTMENTS

Apartment Type S			
Apartment No.	2201, 2301, 2401, 2501		
Floor	22	23	24 25
Apartment Area	155.3 sq m	1,672 sq ft	
Living/Kitchen	8.56m x 8.90m	28'01" x 28'02"	
Master Bedroom Suite	3.60m x 9.61m	11'10" x 31'06"	
Bedroom 2	5.69m x 3.73m	18'07" x 12'02"	
Bedroom 3	4.15m x 3.70m	13'07" x 12'01"	
Balcony Area	4.5 sq m	48 sq ft	

Apartment Type T			
Apartment No.	2204, 2304, 2404, 2504		
Floor	22	23	24 25
Apartment Area	153.1 sq m	1,648 sq ft	
Living/Kitchen	8.56m x 8.91m	28'01" x 29'03"	
Master Bedroom Suite	3.60m x 9.16m	11'10" x 30'00"	
Bedroom 2	5.69m x 3.73m	18'07" x 12'02"	
Bedroom 3	4.15m x 3.70m	13'07" x 12'01"	
Balcony Area	4.5 sq m	48 sq ft	



Floorplans shown for Thirty Casson Square are approximate measurements only. Floorplans are not to scale. Exact layout and size may vary.



- Key**

 - W Wardrobe
 - SC Service Cupboard
 - B Balcony
 - JB Juliette Balcony
- Two Bedroom Apartment
 - Three Bedroom Apartment



PENTHOUSE SUPERIOR SUITES

LEVEL 26

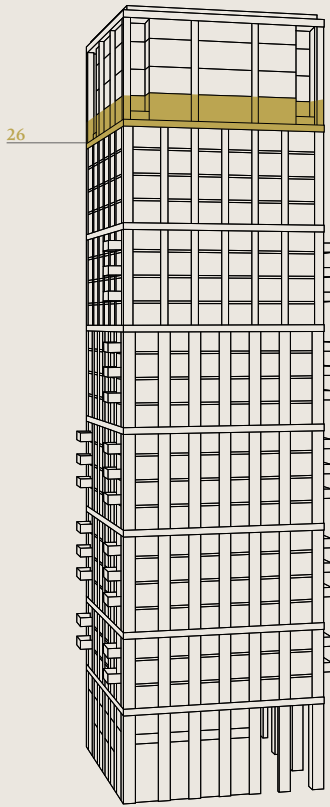
THREE BEDROOM PENTHOUSE SUPERIOR SUITES

Apartment Type V		
Apartment No.	2602	
Floor	26	
Apartment Area	211.2 sq m	2,273 sq ft
Living/Kitchen	11.73m x 8.43m	38'06" x 27'07"
Master Bedroom Suite	3.74m x 7.52m	12'03" x 24'08"
Bedroom 2	4.13m x 6.43m	13'06" x 21'01"
Bedroom 3	3.74m x 5.77m	12'03" x 18'10"
Balcony Area	14.1 sq m	151 sq ft

Apartment Type W		
Apartment No.	2601	
Floor	26	
Apartment Area	214.1 sq m	2,304 sq ft
Living/Kitchen	11.73m x 8.88m	38'06" x 29'01"
Master Bedroom Suite	3.74m x 7.52m	12'03" x 24'08"
Bedroom 2	4.13m x 6.43m	13'06" x 21'01"
Bedroom 3	3.74m x 5.77m	12'03" x 18'10"
Balcony Area	14.1 sq m	151 sq ft



Floorplans shown for Thirty Casson Square are approximate measurements only. Floorplans are not to scale. Exact layout and size may vary.



↑
Facing River Thames
& Jubilee Gardens



Type V
2602

Type W
2601

- Key**

 - W Wardrobe
 - SC Service Cupboard
 - B Balcony
 - JB Juliette Balcony
- Penthouse Superior Suite – V
 - Penthouse Superior Suite – W



PENTHOUSE SUPERIOR SUITES

LEVEL 27

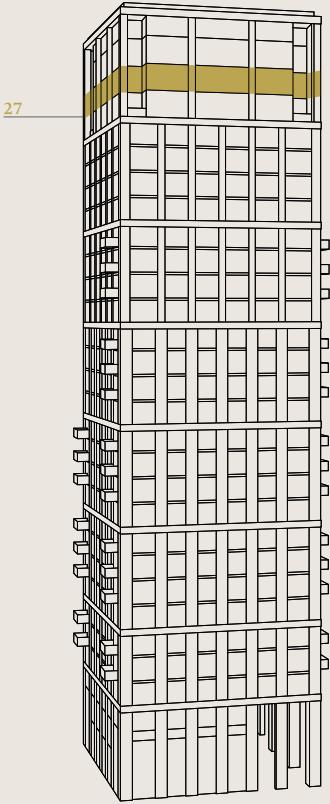
THREE BEDROOM PENTHOUSE SUPERIOR SUITES

Apartment Type V		
Apartment No.	2702	
Floor	27	
Apartment Area	211.2 sq m	2,273 sq ft
Living/Kitchen	11.73m x 8.43m	38'06" x 27'07"
Master Bedroom Suite	3.74m x 7.52m	12'03" x 24'08"
Bedroom 2	4.13m x 6.43m	13'06" x 21'01"
Bedroom 3	3.74m x 5.77m	12'03" x 18'10"
Balcony Area	Juliette Balcony	

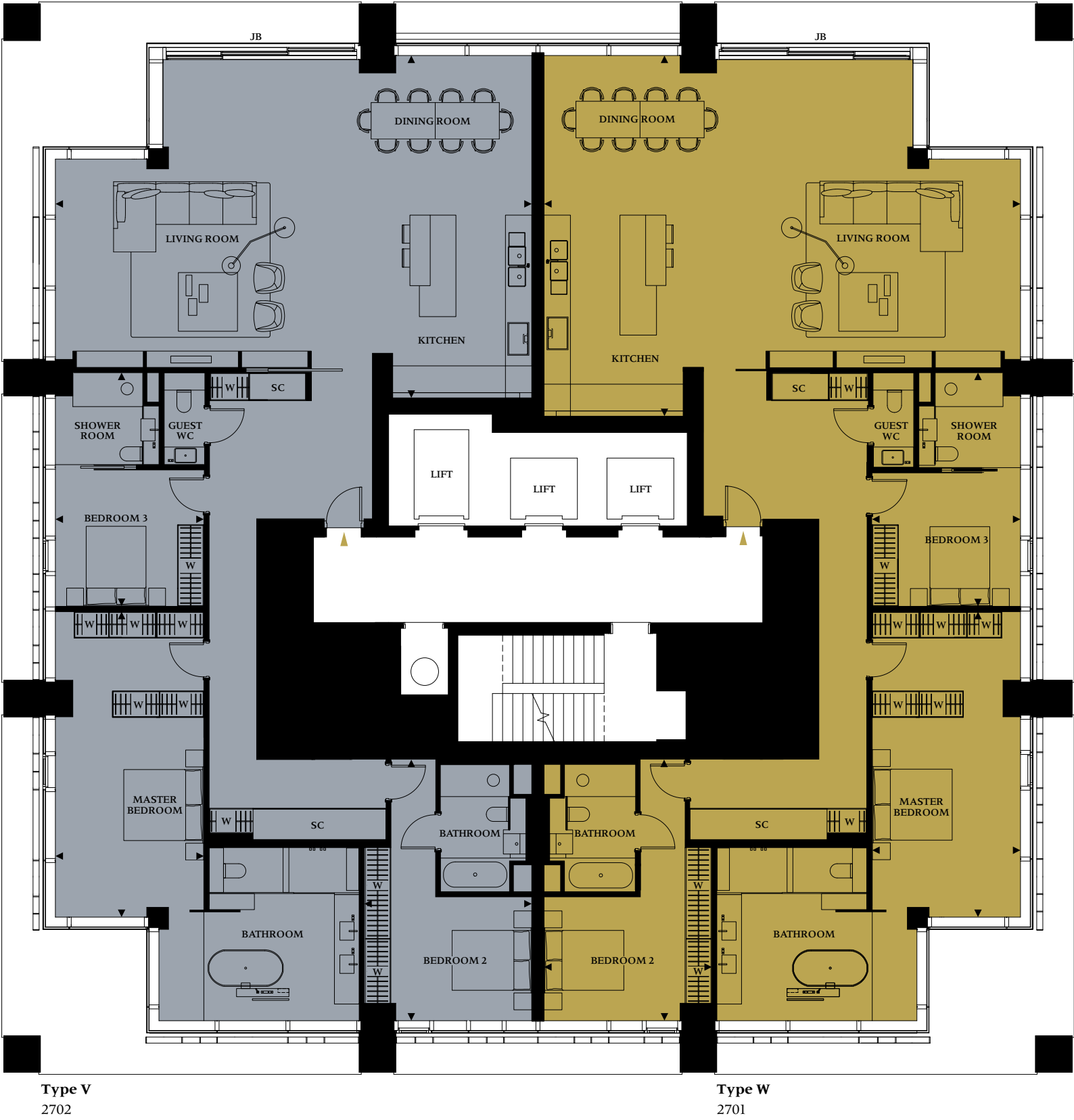
Apartment Type W		
Apartment No.	2701	
Floor	27	
Apartment Area	214.1 sq m	2,304 sq ft
Living/Kitchen	11.73m x 8.88m	38'06" x 29'01"
Master Bedroom Suite	3.74m x 7.52m	12'03" x 24'08"
Bedroom 2	4.13m x 6.43m	13'06" x 21'01"
Bedroom 3	3.74m x 5.77m	12'03" x 18'10"
Balcony Area	Juliette Balcony	



Floorplans shown for Thirty Casson Square are approximate measurements only. Floorplans are not to scale. Exact layout and size may vary.



↑
Facing River Thames
& Jubilee Gardens



- Key**

 - W Wardrobe
 - SC Service Cupboard
 - B Balcony
 - JB Juliette Balcony
- Penthouse Superior Suite – V
 - Penthouse Superior Suite – W



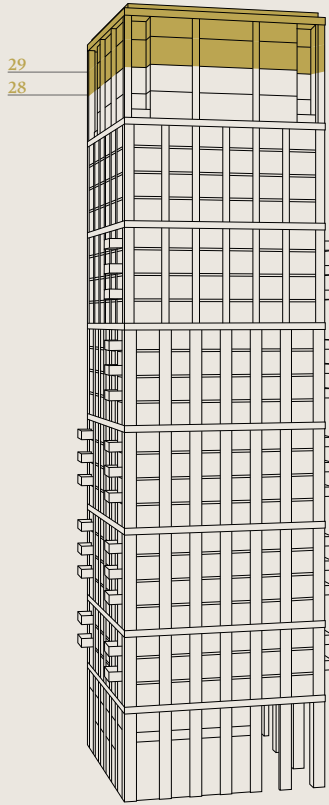
DUPLEX PENTHOUSE LEVELS 28, 29

FOUR BEDROOM DUPLEX PENTHOUSE

Apartment Type X		
Apartment No.	2801	
Floor	28	29
Apartment Area	638.9 sq m	6,875 sq ft
Living Room 1	23.76m x 7.32m	77'11" x 24'00"
Kitchen	7.45m x 4.93m	24'05" x 16'02"
Media Room	3.37m x 5.06m	11'06" x 16'06"
Living Room 2	8.81m x 6.28m	27'02" x 30'02"
Master Bedroom	8.20m x 8.40m	26'10" x 27'07"
Bedroom 2	7.54m x 5.06m	24'08" x 16'06"
Bedroom 3	7.54m x 5.05m	24'08" x 16'06"
Bedroom 4	4.66m x 4.93m	15'03" x 16'02"
Study	4.50m x 4.93m	14'09" x 16'02"
Balcony Area	22.1 sq m	238 sq ft



Floorplans shown for Thirty Casson Square are approximate measurements only. Floorplans are not to scale. Exact layout and size may vary. Indicative plan purchaser options possible subject to cut off date.



LEVEL 28 - LOWER LEVEL



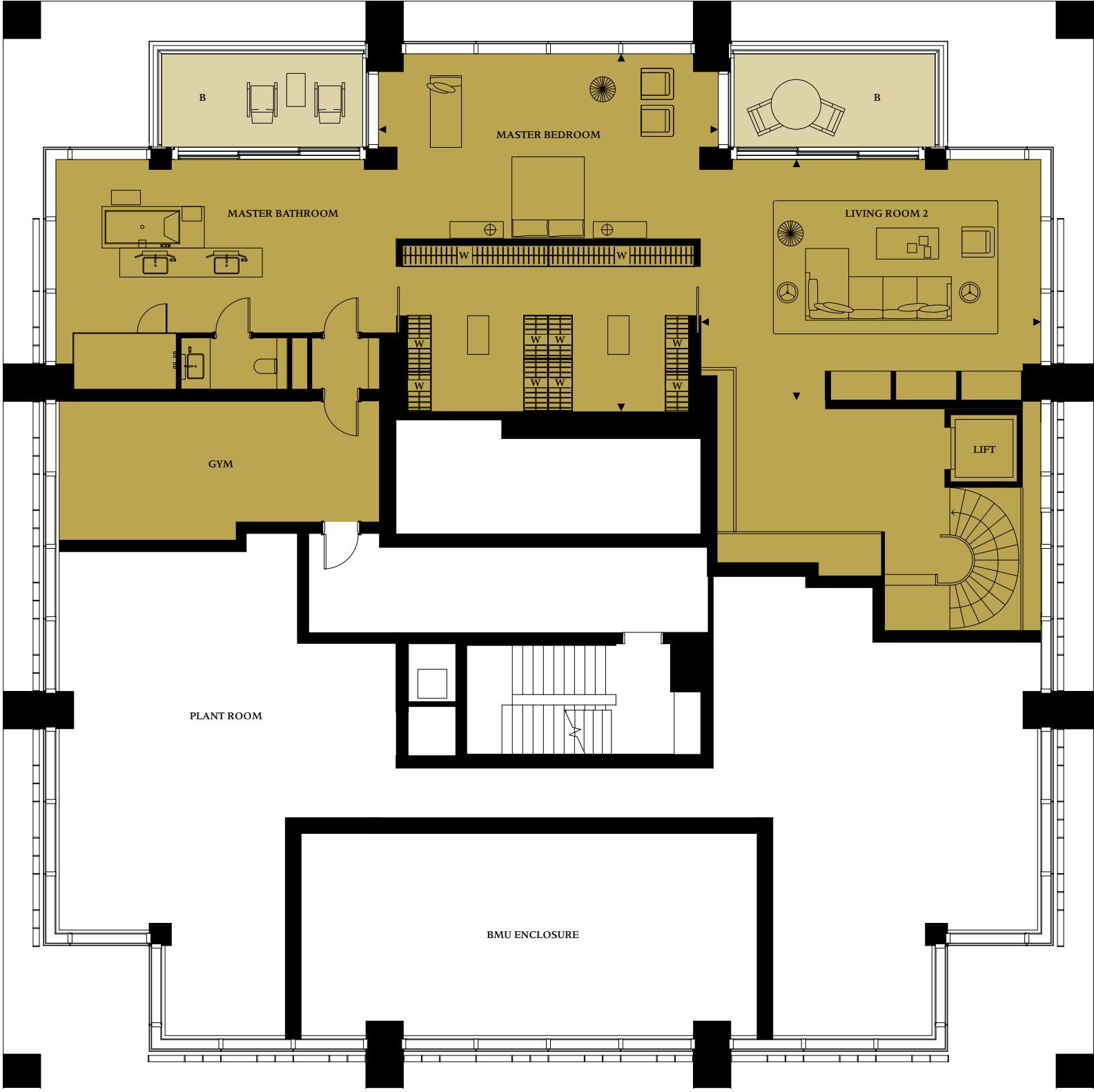
Type X
2801

- Key**

 - W Wardrobe
 - SC Service Cupboard
 - B Balcony
 - JB Juliette Balcony
- Duplex Penthouse

↑
Facing River Thames
& Jubilee Gardens

LEVEL 29 - UPPER LEVEL



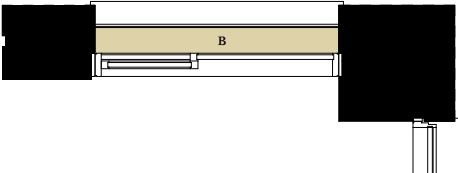
↑
Facing River Thames
& Jubilee Gardens



TWO BEDROOM APARTMENTS

Apartment Type L

Living/Kitchen		5.04m x 7.68m		16'06" x 25'02"	
Master Bedroom Suite		3.35m x 9.30m		10'11" x 30'05"	
Bedroom 2		3.83m x 4.04m		12'06" x 13'02"	
Floor	Apt. No.	Apartment Area		Balcony Area	
16	1601	102.6 sq m	1,104 sq ft	6.5 sq m	70 sq ft



Type L Small Balcony

Apartment Type L

- Key
- W

Wardrobe
- SC

Service Cupboard
- B

Balcony
- JB

Juliette Balcony

Floorplans shown for Thirty Casson Square are approximate measurements only. Floorplans are not to scale. Exact layout and size may vary.



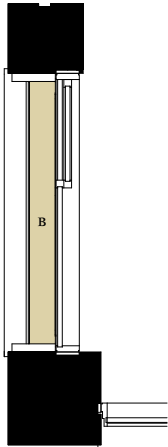
TWO BEDROOM APARTMENTS

Apartment Type Q

Living/Kitchen		4.70m x 8.91m		15'05" x 29'02"	
Master Bedroom Suite		7.06m x 3.75m*		23'02"* x 12'03"	
Bedroom 2		3.82m x 3.44m		12'06" x 11'03"	
Floor	Apt. No.	Apartment Area		Balcony Area	
24	2403	96.0 sq m	1,033 sq ft	1.1 sq m	12 sq ft
25	2503	96.0 sq m	1,033 sq ft	1.1 sq m	12 sq ft



*Dimension changes at level 21
Floorplans shown for Thirty Casson Square are approximate measurements only.
Floorplans are not to scale. Exact layout and size may vary.



Type Q Small Balcony



Apartment Type Q

- Key**
- W Wardrobe
 - SC Service Cupboard
 - B Balcony
 - JB Juliette Balcony



YOUR DESIGN CHOICE

River and Garden Material Palettes

The apartments and penthouses at Thirty Casson Square can be personalised with one of two sophisticated colour palettes. Drawing influences from the natural surroundings, the River and Garden schemes work in harmony with the fixtures and fittings.

River is the lighter, more reflective choice, designed to echo the ebb and flow of the River Thames.

Garden is rooted in nature, with richer, earthier tones influenced by the nearby Jubilee Gardens.



River Palette



Garden Palette



Computer generated images are indicative of a 1 bedroom apartment kitchen and 2 bedroom apartment bathroom

SPECIFICATION

Main Structures
Reinforced concrete frame on piled foundations including appropriate vibration isolation.
Building Envelope
Combination of precast stone effect cladding panels to columns and major floor spandrels and unitised curtain walling infill of glazed and solid panels.
Floors
Reinforced concrete slabs integral with the main structural frame.
Roof
High performance membrane roofing with precast paving finish to principal areas to provide access for maintenance.
Windows and Doors
Triple glazed windows in bronze painted or anodised aluminium frames with opening lights and sliding doors, as appropriate, to provide ventilation and give access to balconies.
Stairs (Means of Escape)
Precast or in-situ cast concrete stairs with painted steel balustrades.
Balconies
Balconies constructed to provide level access from the interior of the apartment. Balustrades to be glazed with minimal vertical supports and bronze painted or anodised aluminium handrail. Floor finish to be natural timber or precast stone elements as appropriate. Juliette style balconies of studios and some one bed apartments include external bronze painted or anodised aluminium balustrade and handrail.
Internal Walls
Party walls constructed from metal studwork, finished with layers of acoustic plasterboard to both sides and acoustic insulation between. Enhanced acoustic attenuation provided to party walls in terms of general and low frequency performance. Additional security measures to be included in all party wall construction.
Internal walls constructed of metal studwork with plasterboard facing and acoustic insulation where appropriate.
All internal walls to be skim plaster finished or taped and jointed.
Ceilings

Ceilings to be suspended plasterboard construction. Specially formed features to provide lighting troughs, curtain and blind support details and access arrangements to services included above the ceiling. All ceilings to be skim plaster finished or taped and jointed.

Material Palettes
Alternative material palettes will be offered to purchasers, subject to agreed cut-off dates, in relation to the construction programme. Selections will be confirmed with purchasers on the basis of a review of representative material samples.
Flooring
Engineered pre-finished fumed oak natural timber flooring throughout all living and bedroom areas.
Doors
Apartment front door to be a generous width with integrated lights over the door and feature plate to include apartment number and doorbell. Front door finish to be lacquer or paint to internal face and timber veneer to external face with bespoke bronze finish ironmongery.
Internal doors to be full height with shadow gap frame detailing. Finish to be painted or lacquer to all surfaces with bespoke bronze finish ironmongery.
Kitchens
Studios
Fitted with custom designed modular cabinets with integrated appliances. Under counter low level doors/pull out units and high level cupboard doors finished with timber veneer. All cupboards and pull out units to be handle free with appropriate concealed pulls, touch opening and soft closing mechanisms included. Work surface formed in single piece of stainless steel with integrated sink, mixer tap and two ring induction hob. Worktop concealed with hydraulic folding lid to provide continuous surface when not in use. Splash back to be formed in honed stone with large format tiles and minimum joints.
LED lighting included as a continuous strip below wall cabinets and integrated into unit design as appropriate.
Integrated appliances include:
<ul style="list-style-type: none">Miele microwave combination ovenMiele induction two-ring hobMiele low level fridge freezerMiele slimline dishwasherMiele wine coolerExtractor hood with direct exhaust to outside (not recirculating)
One and Two Bedroom Apartments
Fitted with custom designed modular cabinets and integrated appliances. Full height units finished in factory applied lacquer. Under counter low level doors/pull out units finished with solid acrylic panels and high level cupboard doors finished with timber veneer. All cupboards and pull out units to be handle free with appropriate concealed pulls, touch opening and soft close mechanisms. High level units include a feature open recessed shelf with contrasting interior and tinted mirror back panel.

Work surface formed in a large format of Quartz technical stone with preformed cut outs for induction hob, under mounted sink and taps. Sink and mixer tap finished in satin stainless steel.
Kitchens with return island section include raised cantilever breakfast bar in honed stone finish.
Splash back formed in honed stone in large format tiles with minimum joints. LED lighting included as a continuous strip below wall cabinets and integrated into unit design as appropriate.
Integrated appliances include:
<ul style="list-style-type: none">Miele induction four-ring hobMiele ovenMiele microwave combination ovenMiele full height fridge/freezerMiele full size dishwasherMiele wine coolerExtractor hood with direct exhaust to outside (not re-circulating)
Three Bedroom Apartments
Fitted with custom designed modular cabinets with integrated appliances. Full height units finished in factory applied lacquer. Under counter doors/pull out units finished with solid acrylic panels and high level cupboard doors finished with timber veneer. All cupboards and pull out units to be handle free with appropriate recessed pulls, touch opening and soft close mechanisms included. High level units include feature open recessed shelf with contrasting interior and tinted mirror back panel.
Work surface formed in a large format of Quartz technical stone with vertical return and preformed cut outs for induction hob, under mounted sink and taps. Sink and mixer tap finished in satin stainless steel.
Kitchens include island unit with raised cantilever breakfast bar in honed stone finish.
Splash back formed in honed stone in large format tiles with minimum joints. LED lighting included as a continuous strip below wall cabinets and integrated into unit design as appropriate.
Integrated appliances include:
<ul style="list-style-type: none">Miele induction five-ring hobMiele built in ovenMiele built in steam ovenMiele built in microwave combination ovenMiele full height fridge/freezerMiele full size dishwasherMiele wine coolerMiele warmer drawerMiele coffee makerBoiling water tapExtractor hood with direct exhaust to outside (not re-circulating)

Shower Rooms
All shower rooms are fitted with a walk in shower facility with flush floor to all areas. Fittings include white ceramic wall hung WC pan with soft close seat and concealed support frame and cistern. Bespoke vanity unit manufactured from white ceramic or stone composite to form wash hand basin and vanity shelf with integrated flush controls to the WC and removable jewellery tray providing cistern access. Walk in shower with slot channel drain to one side and anti-splash glass screen. Glass door to shower only provided where necessary.
Brassware including thermostatic shower control, shower head, mixer tap and toilet roll holder all manufactured by Crosswater, or similar, with polished chrome finish.
Floor finished in large format stone with honed anti-slip finish.
Walls finished in a combination of polished natural stone, back painted glass and mirror. Heated wall sections provided behind bespoke designed rails for towel and bathrobe warming. Contrasting polished stone feature wall formed in the walk in shower.
The wall between the shower room and living space of the studio apartments contains a translucent stone effect glass panel, providing natural light into the shower room.
Bathrooms
Bathrooms are provided in the larger one bedroom units and the master bedroom suites. The master suite configuration includes a spacious four piece bathroom arrangement.
Three Piece Bathrooms
The three piece bathroom comprises WC, wash hand basin and bath with shower over and anti-splash glass screen.
White ceramic wall hung WC pan with soft close white seat and concealed support frame and cisterns. Bespoke vanity unit manufactured from white ceramic or stone composite to form wash hand basin and vanity shelf with integrated flush controls for the WC and removable jewellery tray providing cistern access.
Enamel steel bath with polished stone bath panel and hinged glass screen for shower.
Brassware including bath and thermostatic shower controls, shower head, basin mixer tap and toilet roll holder all manufactured by Crosswater, or similar, with polished chrome finish.
Floor and bath panel finished in large format stone, with polished finish to bath panel and honed anti-slip finish to floor.
Wall finished in a combination of polished stone, back painted glass and mirror. Heated wall provided behind bespoke designed rails for towel and bathrobe warming. Contrasting polished stone feature wall formed at the shower end of the bath.



SPECIFICATION

Four Piece Bathrooms	Heating and Cooling	Blind and Curtain Installations	Health and Fitness Facilities
Four piece bathroom similar to the three piece bathroom with separate walk in shower and full-height glass screen provided in lieu of the over-bath shower. The general wall and floor finishes are the same as the three piece bathroom with the contrasting feature stone used for the back wall of the shower, bath and panelling behind WC.	Metered hot and chilled water mains fed from centralised plant infrastructure are provided into each apartment. These serve a zoned under floor heating system to all areas of the apartment and provide comfort cooling to all the principal spaces via ceiling mounted fan coils. Individual environmental control included for all principal rooms.	A recessed ceiling feature or bulkhead is provided at all window interfaces to accommodate a blind or sheer curtain and a second curtain. Power and control cabling will be provided to allow the installation of powered blinds and curtains by purchaser.	Within the Southbank Place development an exclusive Health and Fitness facility is proposed for use by all the private residential apartments. This will include the following: <ul style="list-style-type: none">Swimming pool and associated wet health experience facilitiesMulti-functional gym including aerobic equipment, resistance equipment, free weights and personal trainer facilitiesStudio space for Yoga, Spinning and other similar group activitiesChanging and relaxation areas The facility will also include a dedicated commercial Spa facility which will be available to residential occupiers subject to separate charges
Shower Room and Bathroom Storage	Fire Safety	Management and Security	Bicycle Parking
All shower rooms and bathrooms are provided with a combination of mirror fronted bathroom storage cabinets with timber veneer and back painted glass linings, open shelf units with timber veneer linings and tinted mirror back. Cabinets include shelving with integrated LED lighting as appropriate and concealed shaver socket outlet. Mirror cabinet doors to include heated anti-mist sections.	All apartments include residential standard sprinkler protection with concealed heads integrated into the ceiling and mains wired apartment wide fire detection system comprising heat and smoke detectors as appropriate to all principal rooms.	The whole Southbank Place development will benefit from estate management and security monitoring including: <ul style="list-style-type: none">Centralised concierge/security officeCCTV security with centralised monitoringSecurity staff on a 24 hour basis Thirty Casson Square will have its own dedicated security provision as follows: <ul style="list-style-type: none">Manned concierge station in the lobby of Thirty Casson SquareApartment video entry phone including two way connections with the concierge for Thirty Casson SquareSecurity system power supply and space allocation in utility cupboards to allow installation by the purchaser of a security system. Purchaser responsible for installation of security system and all costs for external connection to third party security providerApartment entrance doors to be in accordance with Secured by Design Standards	Bicycle parking provided in the basement for all apartments.
Wardrobes	Electrical Installations	Lifts	Car Parking
Bespoke wardrobes with full height timber veneer doors complete with soft close mechanism will be standard in all apartments. Wardrobe sizes to match apartment types. All wardrobes will include internal lighting, hanging rail and shelves.	All lighting installations will be low energy LED fittings either as concealed strips forming trough lighting and ceiling edge feature lighting or recessed down-lighters.	The building contains 3 no. high speed lifts serving all floors of the building. One of the lifts is configured as a service lift in terms of duty and lift car size. This will be allocated for all furniture moves and apartment fit-out works in the future and provided with removable protection drapes for this purpose. The finish to all lifts will be identical and commensurate with the building main lobby finishes.	Secure basement car parking available subject to separate negotiation.
Utility Cupboards		Residents’ Amenity Facilities	Basement Storage Units
Utility cupboards are provided to all units to house the principal in-coming supplies and building services equipment. This equipment includes the following: <ul style="list-style-type: none">Whole house ventilation unitCooling and heating interface unitsElectrical distribution panelLighting control systemSpace allowance for AV/Home Automation Systems installations by the purchaser including the ability to interface with any pre-installed wiringWasher dryer by Siemens or similar Full height access doors in timber veneer or factory applied lacquer as appropriate to location.	All apartments include the following IT/AV infrastructure: <ul style="list-style-type: none">2 no. optic fibre connections from main building wiring for satellite and digital terrestrial TV channels. Purchasers responsible for all device connections and chargesHigh speed fibre optic feed for telephone and dedicated broadband services. Purchaser responsible for all service connections and chargesVideo and TV wiring provided to pre-determined outlet points in all the principal roomsCeiling speaker wiring provided to pre-determined locations in all principal rooms. Speaker installation by purchaserPower and control cabling for automated blinds and curtains including interface connection to lighting control positions. Blinds and curtains to be installed by purchaser including wiring connectionsAll AV and control cabling terminated in the utility/service cupboard to facilitate the installation of integrated AV installations and home automation systems by the purchaser. AV and home automation system upgrade packages will be available to purchasers. The details of options will be confirmed to purchasers during construction to ensure they reflect up-to-date technology availableAll switch plates either RAL colour to match adjacent decorated surfaces or bronze finish when mounted in dark timber veneer panels	All residents’ lounge is provided at first floor level directly accessible from the main entrance lobby. This is a flexible space providing business facilities, meeting facilities, relaxation space and multi-function area. At times, parts of this facility will be available to residents on a bookable basis for private events.	Secure basement storage units available subject to separate negotiation.
			Warranty
			All apartments come with the benefit of a 10 year NHBC Warranty from the date of completion. <small>Note: Where a particular material or product is specified this may be subject to change due to either availability of a particular product or quality of material available at the time of procurement.</small>

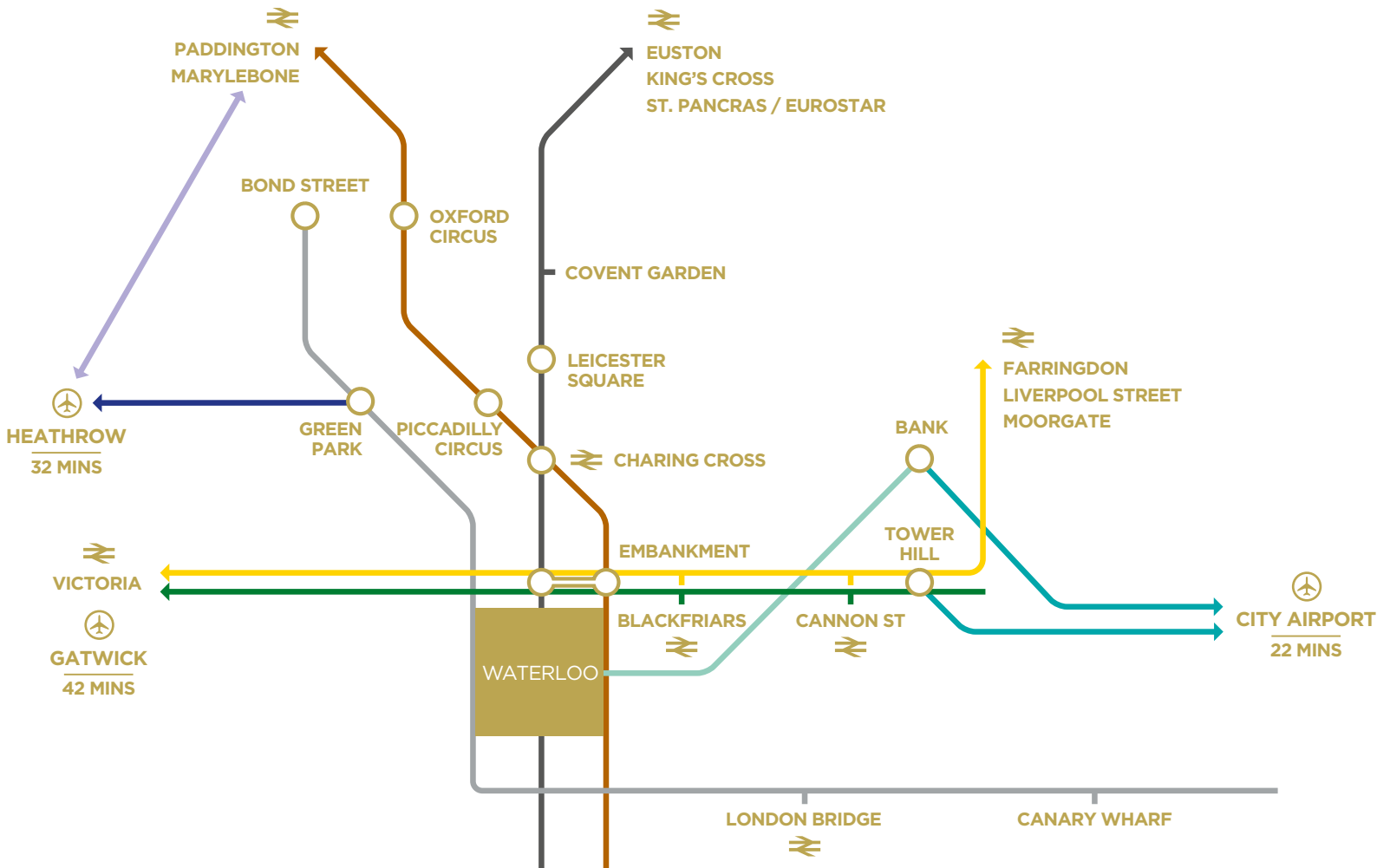


ONE OF LONDON'S BEST CONNECTED LOCATIONS



Travel connections

Thirty Casson Square occupies a central location on London's South Bank, with numerous public transport connections on its doorstep. Every one of London's most recognisable landmarks and major Underground stations is accessible on foot in less than 20 minutes. In addition, the UK's most popular airports - Heathrow, Gatwick and City - are within 45 minutes, while the river taxi service stops moments from Southbank Place.



Walking Distances

London Eye	02 mins
Southbank Centre / Royal Festival Hall	03 mins
Hayward Gallery	04 mins
National Theatre	04 mins
The Old Vic	04 mins
Houses of Parliament	09 mins
Charing Cross	09 mins
Strand	10 mins
King's College	11 mins
Trafalgar Square	11 mins
Tate Modern	12 mins
National Gallery	12 mins
Royal Opera House	13 mins
Covent Garden	13 mins
Shakespeare's Globe Theatre	14 mins
St Paul's Cathedral	15 mins
Borough Market	17 mins

Underground from Waterloo

Charing Cross	02 mins
Green Park	03 mins
Bank	04 mins
Bond Street	05 mins
Tottenham Court Road	05 mins
Victoria	09 mins
Canary Wharf	09 mins
Euston	09 mins
Hyde Park Corner	11 mins
Liverpool Street	11 mins
Marylebone	11 mins
Knightsbridge	12 mins
King's Cross St. Pancras	13 mins
Sloane Square	13 mins
Eurostar	14 mins

Airports from Waterloo

City	22 mins
Heathrow	32 mins
Gatwick	42 mins
Stansted	52 mins

River Taxi

Embankment	06 mins
City	13 mins
Canary Wharf	26 mins
Greenwich	37 mins

Bridges

Westminster Bridge (for Houses of Parliament)	04 mins
Golden Jubilee Footbridge (for Trafalgar Square)	11 mins
Waterloo Bridge (for the Strand)	09 mins

Key

- Bakerloo line
- Circle line
- District line
- DLR
- Heathrow Express
- Jubilee line
- Northern line
- Piccadilly line
- Waterloo & City line

SOUTHBANK PLACE MASTER PLAN



One Southbank Place / Squire and Partners



Two Southbank Place / Kohn Pedersen Fox Associates



One & Thirty Casson Square / Squire and Partners



Four Casson Square / Patel Taylor Architects



The Belvedere / Stanton Williams



Belvedere Gardens / GRID Architects



Casson Square
Townshend Landscape Architects / Squire and Partners



Casson Square
Townshend Landscape Architects / Squire and Partners

Computer generated images are indicative only



WWW.SOUTHBANK-PLACE.COM

A development by Braeburn Estates Limited Partnership



Contact

UK sales team

International sales team



MISREPRESENTATION ACT 1967 & DECLARATION Braeburn Estates its subsidiaries and agents give notice that; i) these particulars are a general outline only, for the guidance of prospective purchasers, and do not constitute the whole or any part of an offer or contract; ii) the accuracy of any description, dimensions, references to condition, necessary permissions for use and occupation and other details contained herein is not guaranteed and are not to be relied upon as statements of fact or representations, purchasers must satisfy themselves as to their accuracy; iii) rents quoted in these particulars maybe subject to VAT in addition; (iv) no liability is accepted in negligence or otherwise, for any loss arising from the use of these particulars and; v) the reference to any plant, machinery equipment, services, fixtures or fittings at the property shall not constitute a representation (unless otherwise stated) as to its state or condition or that it is capable of fulfilling its intended function. Prospective purchasers should satisfy themselves as to the fitness of such items for their requirements. Fixtures and fittings may be replaced with items of a comparable quality. vi) Pictorial images, drawings and computer generated images are indicative and for illustrative purposes only. Walking distances are approximates only, source: www.walkit.com. vii) no employee of Braeburn Estates or any of its associated companies or partnerships (and their Joint Agents where applicable) has any authority to make or give any representation or warranty or enter into any contract whatever in relation to the property; December 2015 Subject to Contract.

