









Computer generated image of Belvedere Gardens

# “BELVEDERE GARDENS IS A HIGH PROFILE BUILDING OF OUTSTANDING ARCHITECTURAL MERIT”

**Craig Casci** / GRID Architects

The unique design of this building will ensure that it becomes a landmark in its own right; the visually striking exterior complemented by incomparable views from within. The apartments are arranged across the 10 and 20 storey elements of the building providing 1, 2 and 3 bedroom residences culminating in spectacular penthouses at the very top levels.



# SPECTACULAR VIEWS OVER LONDON

Belvedere Gardens will provide exceptional views of the River Thames, the London Eye and Westminster.





# “CONSIDERED, TIMELESS INTERIORS, A TRIUMPH OF MODERN DESIGN”

**Martin Goddard** / Goddard Littlefair

The rare character and setting of these apartments is enhanced by sophisticated interiors, designed to leave a lasting impression. The spaces have been carefully considered to make the most of the open aspect, the natural light and the superb river views. The rich mix of materials and textures complement and harmonise with the architectural concept and link to the mid-century design of the surrounding area.



Computer generated image is indicative of a 3 bedroom apartment balcony





## WARM RECEPTION

### Entrance Lobby

The hotel-style reception design is of discernment and refinement. The double height space and dramatic feature wall have immediate and lasting impact. Beautifully designed, perfectly detailed, the lobby's lavish style and elegance provides a fitting welcome to these prestigious apartments.



# RESIDENTS' LOUNGE

## Relax & Unwind

This private and exclusive area is reserved for the enjoyment of residents and their guests. A dedicated reception area leads to the opulent lounge and bar, a gracious and convivial space for social gatherings or relaxed business meetings. From here, doors lead to an outside terrace and entertainment area.







# LUXURIOUS HEALTH CLUB AND SPA

## Luxury Amenities

In addition to the health club available to all Southbank Place residents, Belvedere Gardens has its own, exclusive health centre and spa. The gym, relaxation lounge, sauna, steam room and private changing rooms are custom-designed by Goddard Littlefair.



## Plan Key

- 1 Arrival & Reception
- 2 Treatment Room
- 3 Male Shower Rooms
- 4 Male Changing Area
- 5 Accessible WC
- 6 Relax/Lounge
- 7 Experience Shower
- 8 Steam Room
- 9 Sauna Room
- 10 Female Changing Area
- 11 Female Shower Rooms
- 12 Cardio Workstations
- 13 Free Weights Area
- 14 Feature Mirrored Resistance Wall
- 15 Personal Training Pod/Stretching



# SOPHISTICATED INTERIOR DESIGN

## Living Spaces

An overwhelming sense of luxury flows through the living space at Belvedere Gardens. Enduring contemporary design accentuates the classical scale and proportions of the rooms, while floor to ceiling windows fill the space with light and focus the eye on that spectacular skyline and river views.

Computer generated image is indicative of a 3 bedroom apartment living room











# PERFECTLY REFINED

## Kitchens

A seamless blend of elegance and practicality, the kitchen perfectly complements the living area. Equipped to the highest standards, stylish and sophisticated, the kitchen is a social space designed to cater for everything from small, intimate gatherings to large-scale entertaining with ease and flair.



Computer generated image is indicative of a 2 bedroom apartment living room/kitchen





## SUMPTUOUS RETREAT

### Bedrooms

Bedrooms of distinction, with private balconies offering a sensational perspective on the world outside. The generous space, rich textures and flush of natural daylight create a luxurious and restful environment in which to relax and enjoy a personal view of London.





# LUXURY DEFINED

## Bathrooms & En Suites

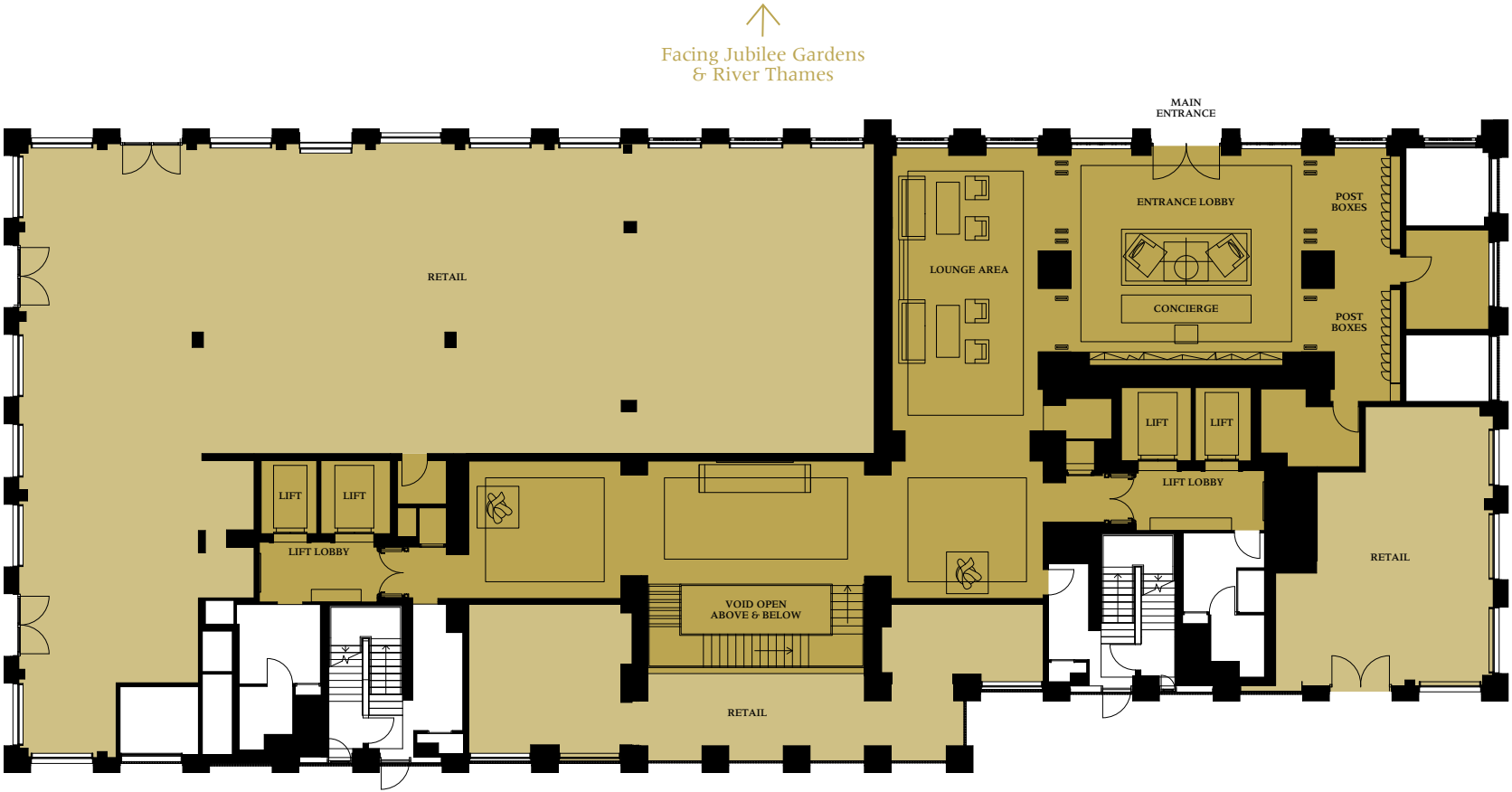
These generously proportioned bathrooms take elegance in design and function to the next level. The approach is clean, fresh and modern, with considered use of materials and beautiful stone finishes adding subtle layers of style and refinement.



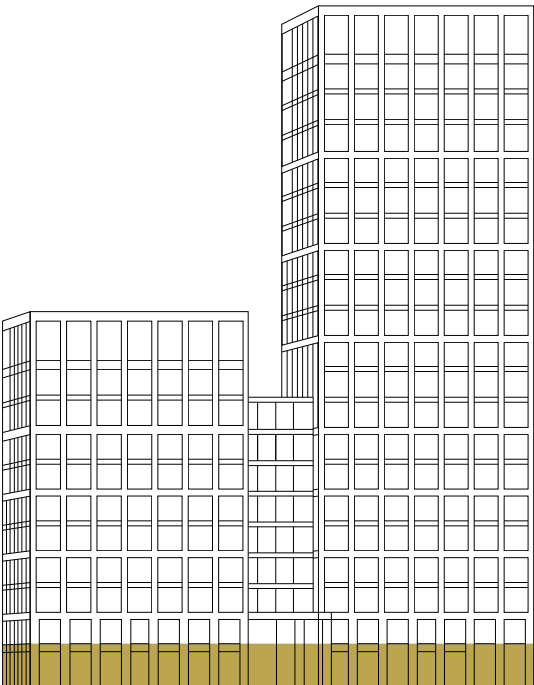
GROUND FLOOR



Computer generated images are indicative only



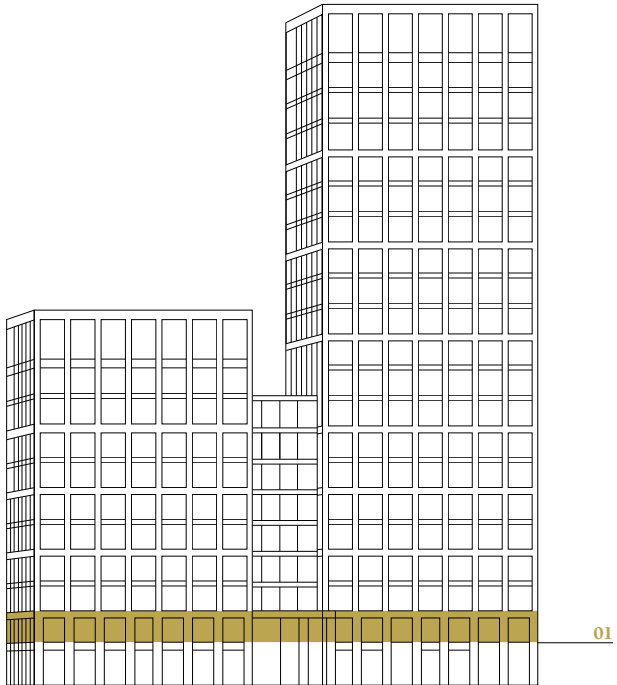
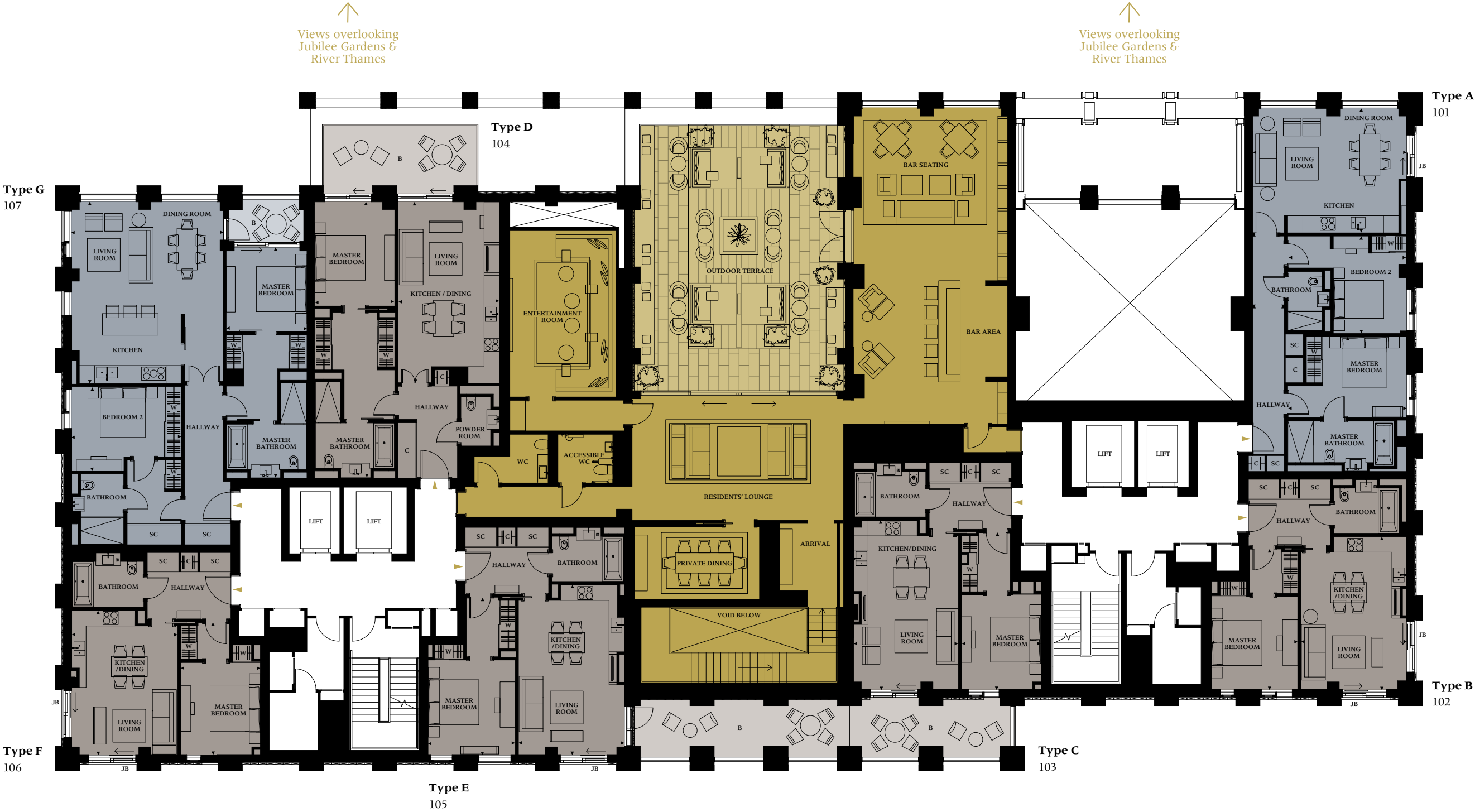
- Retail Areas
- Residential Access



Ground



LEVEL 1



- Key**
- C Cupboard
  - W Wardrobe
  - SC Service Cupboard
  - T Terrace
  - B Balcony
  - JB Juliette Balcony
- Residents' private amenity space
- One Bedroom Apartment
- Two Bedroom Apartment



ONE BEDROOM APARTMENTS

<b>Apartment Type B</b>		
Apartment No.	102	
Floor	1	
<b>Apartment Area</b>	<b>57.6 sq m</b>	<b>620.0 sq ft</b>
Living/Kitchen	4.2m x 6.1m	13'10" x 20'01"
Master Bedroom	3.4m x 5.6m	11'02" x 18'05"
Balcony Area	Juliette Balcony	

<b>Apartment Type C</b>		
Apartment No.	103	
Floor	1	
<b>Apartment Area</b>	<b>60.3 sq m</b>	<b>649.0 sq ft</b>
Living/Kitchen	4.2m x 6.7m	13'10" x 20'11"
Master Bedroom	3.1m x 6.2m	10'02" x 20'05"
Balcony Area	13.9 sq m	150.0 sq ft

<b>Apartment Type D</b>		
Apartment No.	104	
Floor	1	
<b>Apartment Area</b>	<b>77.1 sq m</b>	<b>830.0 sq ft</b>
Living/Kitchen	4.0m x 7.1m	13'01" x 23'03"
Master Bedroom Suite	3.2m x 10.9m	10'06" x 35'10"
Balcony Area	15.7 sq m	169.0 sq ft

<b>Apartment Type E</b>		
Apartment No.	105	
Floor	1	
<b>Apartment Area</b>	<b>62.2 sq m</b>	<b>670.0 sq ft</b>
Living/Kitchen	4.2m x 6.7m	13'10" x 20'11"
Master Bedroom	3.4m x 6.2m	11'02" x 20'05"
Balcony Area	18.1 sq m	195.0 sq ft

<b>Apartment Type F</b>		
Apartment No.	106	
Floor	1	
<b>Apartment Area</b>	<b>54.8 sq m</b>	<b>590.0 sq ft</b>
Living/Kitchen	4.1m x 5.7m	13'15" x 18'08"
Master Bedroom	3.1m x 5.3m	10'02" x 17'04"
Balcony Area	Juliette Balcony	

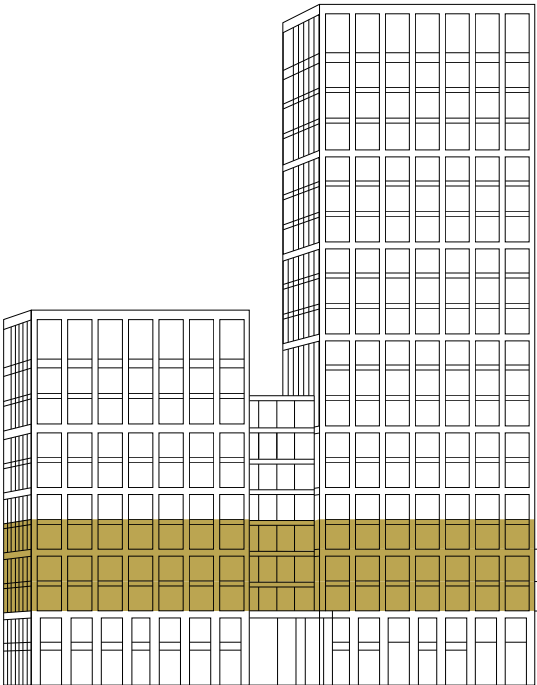
TWO BEDROOM APARTMENTS

<b>Apartment Type A</b>		
Apartment No.	101	
Floor	1	
<b>Apartment Area</b>	<b>86.1 sq m</b>	<b>927.0 sq ft</b>
Living/Kitchen	6.1m x 4.9m	20'01" x 16'00"
Master Bedroom Suite	4.6m x 5.3m	15'01" x 17'04"
Bedroom 2	4.6m x 3.8m	15'01" x 12'05"
Balcony Area	Juliette Balcony	

<b>Apartment Type G</b>		
Apartment No.	107	
Floor	1	
<b>Apartment Area</b>	<b>110.5 sq m</b>	<b>1,189.0 sq ft</b>
Living/Kitchen	6.0m x 7.2m	19'09" x 23'08"
Master Bedroom Suite	3.2m x 9.1m	10'06" x 29'11"
Bedroom 2	4.3m x 3.3m	14'02" x 10'09"
Balcony Area	5.0 sq m	54.0 sq ft



LEVELS 2, 3, 4



- Key**
- C Cupboard
  - W Wardrobe
  - SC Service Cupboard
  - T Terrace
  - B Balcony
  - JB Juliette Balcony
- One Bedroom Apartment
  - Two Bedroom Apartment
  - Three Bedroom Apartment



ONE BEDROOM APARTMENTS

Apartment Type B			
Apartment No.	202	302	402
Floor	2	3	4
Apartment Area	57.6 sq m	620.0 sq ft	
Living/Kitchen	4.2m x 6.1m	13'10" x 20'01"	
Master Bedroom	3.4m x 5.6m	11'02" x 18'05"	
Balcony Area	Juliette Balcony		

Apartment Type E			
Apartment No.	206	306	406
Floor	2	3	4
Apartment Area	62.3 sq m	671.0 sq ft	
Living/Kitchen	4.2m x 6.7m	13'10" x 21'11"	
Master Bedroom	3.4m x 6.2m	11'02" x 20'05"	
Balcony Area	Juliette Balcony		

Apartment Type F			
Apartment No.	207	307	407
Floor	2	3	4
Apartment Area	54.8 sq m	590.0 sq ft	
Living/Kitchen	4.1m x 5.7m	13'05" x 18'08"	
Master Bedroom	3.1m x 5.3m	10'02" x 17'04"	
Balcony Area	Juliette Balcony		

TWO BEDROOM APARTMENTS

Apartment Type J			
Apartment No.	203	303	403
Floor	2	3	4
Apartment Area	128.0 sq m	1,378.0 sq ft	
Living/Kitchen	10.3m x 8.1m	33'09" x 26'07"	
Master Bedroom Suite	4.1m x 7.2m	13'06" x 23'08"	
Bedroom 2	3.1m x 5.8m	10'02" x 19'00"	
Balcony Area	Juliette Balcony		

<b>Apartment Type K</b>			
Apartment No.	204	304	404
Floor	2	3	4
<b>Apartment Area</b>	<b>113.7 sq m</b>	<b>1,224.0 sq ft</b>	
Living/Kitchen	6.0m x 7.4m	19'09" x 24'04"	
Master Bedroom Suite	3.2m x 10.0m	10'06" x 32'10"	
Bedroom 2	4.4m x 3.3m	14'05" x 10'09"	
Balcony Area	5.7 sq m	61.0 sq ft	

<b>Apartment Type L</b>			
Apartment No.	205	305	405
Floor	2	3	4
<b>Apartment Area</b>	<b>132.9 sq m</b>	<b>1,431.0 sq ft</b>	
Living/Kitchen	4.9m x 10.7m	16'00" x 35'02"	
Master Bedroom Suite	3.6m x 11.0m	11'10" x 36'02"	
Bedroom 2	3.5m x 7.4m	11'06" x 24'04"	
Balcony Area	8.0 sq m	86.0 sq ft	

<b>Apartment Type G</b>			
Apartment No.	208	308	408
Floor	2	3	4
<b>Apartment Area</b>	<b>110.5 sq m</b>	<b>1,189.0 sq ft</b>	
Living/Kitchen	6.0m x 7.2m	19'09" x 23'08"	
Master Bedroom Suite	3.2m x 9.1m	10'06" x 29'11"	
Bedroom 2	4.3m x 3.3m	14'02" x 10'09"	
Balcony Area	5.0 sq m	54.0 sq ft	

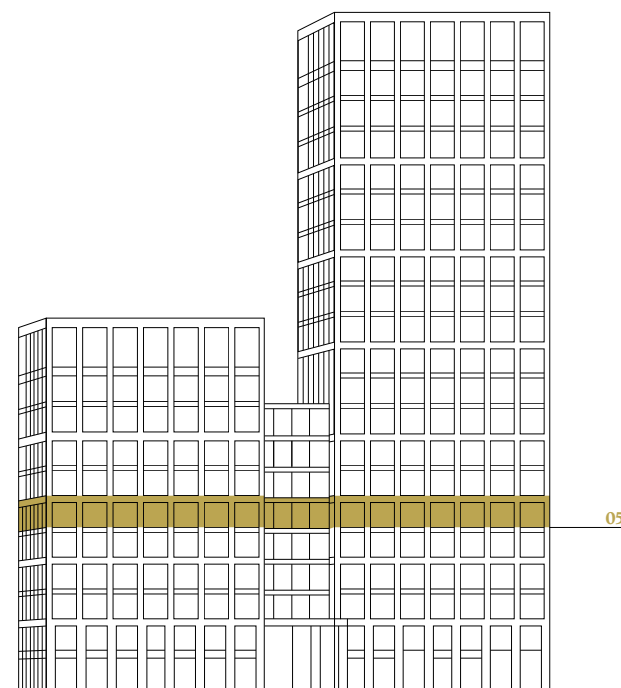
THREE BEDROOM APARTMENT




<b>Apartment Type H</b>			
Apartment No.	201	301	401
Floor	2	3	4
<b>Apartment Area</b>	<b>146.9 sq m</b>	<b>1,581.0 sq ft</b>	
Living/Kitchen	5.9m x 9.0m	19'05" x 29'07"	
Master Bedroom Suite	3.4m x 10.0m	11'02" x 32'10"	
Bedroom 2	4.4m x 5.2m	14'06" x 17'00"	
Bedroom 3/Study	2.6m x 6.4m	8'07" x 20'11"	
Balcony Area	11.7 sq m	126.0 sq ft	

Floorplans shown for Belvedere Gardens are approximate measurements only. Floorplans are not to scale. Exact layout and sizes may vary.



## LEVEL 5



- Key**
- C Cupboard  
W Wardrobe  
SC Service Cupboard  
T Terrace  
B Balcony  
JB Juliette Balcony
-  One Bedroom Apartment  
 Two Bedroom Apartment  
 Three Bedroom Apartment



## ONE BEDROOM APARTMENT

<b>Apartment Type B</b>		
Apartment No.	502	
Floor	5	
<b>Apartment Area</b>	<b>57.6 sq m</b>	<b>620.0 sq ft</b>
Living/Kitchen	4.2m x 6.1m	13'10" x 20'01"
Master Bedroom	3.4m x 5.6m	11'02" x 18'05"
Balcony Area	Juliette Balcony	

## TWO BEDROOM APARTMENTS

<b>Apartment Type J</b>		
Apartment No.	503	
Floor	5	
<b>Apartment Area</b>	<b>128.0 sq m</b>	<b>1,378.0 sq ft</b>
Living/Kitchen	10.3m x 8.1m	33'09" x 26'07"
Master Bedroom Suite	4.1m x 7.2m	13'06" x 23'08"
Bedroom 2	3.1m x 5.8m	10'02" x 19'00"
Balcony Area	Juliette Balcony	

<b>Apartment Type K</b>		
Apartment No.	504	
Floor	5	
<b>Apartment Area</b>	<b>113.7 sq m</b>	<b>1,224.0 sq ft</b>
Living/Kitchen	6.0m x 7.4m	19'09" x 24'04"
Master Bedroom Suite	3.2m x 10.0m	10'06" x 32'10"
Bedroom 2	4.4m x 3.3m	14'05" x 10'09"
Balcony Area	5.7 sq m	61.0 sq ft

<b>Apartment Type N</b>		
Apartment No.	505	
Floor	5	
<b>Apartment Area</b>	<b>126.4 sq m</b>	<b>1,361.0 sq ft</b>
Living/Kitchen	5.9m x 8.9m	19'05" x 29'03"
Master Bedroom Suite	4.2m x 9.4m	13'10" x 30'10"
Bedroom 2	3.5m x 8.2m	11'06" x 26'11"
Balcony Area	10.3 sq m	111.0 sq ft

<b>Apartment Type P</b>		
Apartment No.	506	
Floor	5	
<b>Apartment Area</b>	<b>94.3 sq m</b>	<b>1,015.0 sq ft</b>
Living/Kitchen	6.2m x 6.4m	20'05" x 20'11"
Master Bedroom Suite	3.3m x 7.5m	10'10" x 24'08"
Bedroom 2	2.8m x 4.6m	9'02" x 15'01"

<b>Apartment Type R</b>		
Apartment No.	507	
Floor	5	
<b>Apartment Area</b>	<b>133.3 sq m</b>	<b>1,435.0 sq ft</b>
Living/Kitchen	8.7m x 7.3m	28'07" x 23'11"
Master Bedroom Suite	3.0m x 11.0m	9'10" x 36'01"
Bedroom 2	3.7m x 5.5m	12'01" x 18'01"
Balcony Area	10.5 sq m	113.0 sq ft

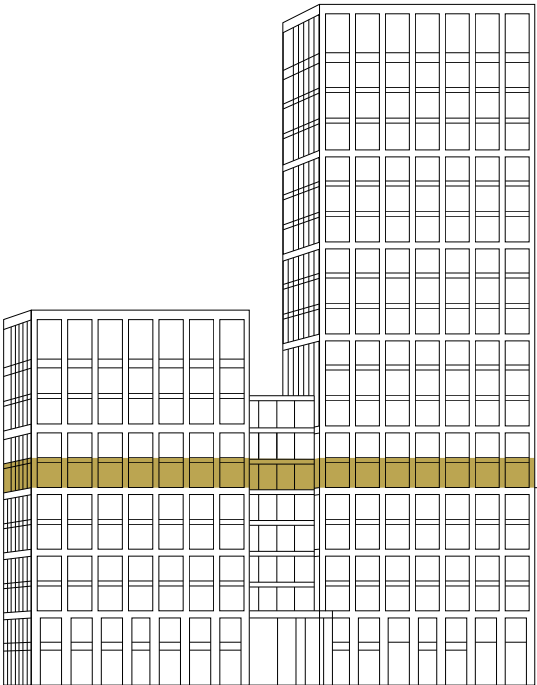
### THREE BEDROOM APARTMENT

Apartment Type H		
Apartment No.	501	
Floor	5	
Apartment Area	146.9 sq m	1,581.0 sq ft
Living/Kitchen	5.9m x 9.0m	19'05" x 29'07"
Master Bedroom Suite	3.4m x 10.0m	11'02" x 32'10"
Bedroom 2	4.4m x 5.2m	14'06" x 17'00"
Bedroom 3/Study	2.6m x 6.4m	8'07" x 20'11"
Balcony Area	11.7 sq m	126.0 sq ft

Floorplans shown for Belvedere Gardens are approximate measurements only. Floorplans are not to scale. Exact layout and sizes may vary.



LEVEL 6



- Key**
- C Cupboard
  - W Wardrobe
  - SC Service Cupboard
  - T Terrace
  - B Balcony
  - JB Juliette Balcony
- One Bedroom Apartment
  - Two Bedroom Apartment
  - Three Bedroom Apartment



ONE BEDROOM APARTMENT

<b>Apartment Type B</b>		
Apartment No.	602	
Floor	6	
<b>Apartment Area</b>	<b>57.6 sq m</b>	<b>620.0 sq ft</b>
Living/Kitchen	4.2m x 6.1m	13'10" x 20'01"
Master Bedroom	3.4m x 5.6m	11'02" x 18'05"
Balcony Area	Juliette Balcony	

TWO BEDROOM APARTMENTS

<b>Apartment Type J</b>		
Apartment No.	603	
Floor	6	
<b>Apartment Area</b>	<b>128.0 sq m</b>	<b>1,378.0 sq ft</b>
Living/Kitchen	10.3m x 8.1m	33'09" x 26'07"
Master Bedroom Suite	4.1m x 7.2m	13'06" x 23'08"
Bedroom 2	3.1m x 5.8m	10'02" x 19'00"
Balcony Area	Juliette Balcony	

<b>Apartment Type K</b>		
Apartment No.	604	
Floor	6	
<b>Apartment Area</b>	<b>113.7 sq m</b>	<b>1,224.0 sq ft</b>
Living/Kitchen	6.0m x 7.4m	19'09" x 24'04"
Master Bedroom Suite	3.2m x 10.0m	10'06" x 32'10"
Bedroom 2	4.4m x 3.3m	14'05" x 10'09"
Balcony Area	5.7 sq m	61.0 sq ft

<b>Apartment Type N</b>		
Apartment No.	605	
Floor	6	
<b>Apartment Area</b>	<b>126.4 sq m</b>	<b>1,361.0 sq ft</b>
Living/Kitchen	5.9m x 8.9m	19'05" x 29'03"
Master Bedroom Suite	4.2m x 9.4m	13'10" x 30'10"
Bedroom 2	3.5m x 8.2m	11'06" x 26'11"
Balcony Area	10.3 sq m	111.0 sq ft

<b>Apartment Type P</b>		
Apartment No.	606	
Floor	6	
<b>Apartment Area</b>	<b>94.3 sq m</b>	<b>1,015.0 sq ft</b>
Living/Kitchen	6.2m x 6.4m	20'05" x 20'11"
Master Bedroom Suite	3.3m x 7.5m	10'10" x 24'08"
Bedroom 2	2.8m x 4.6m	9'02" x 15'01"

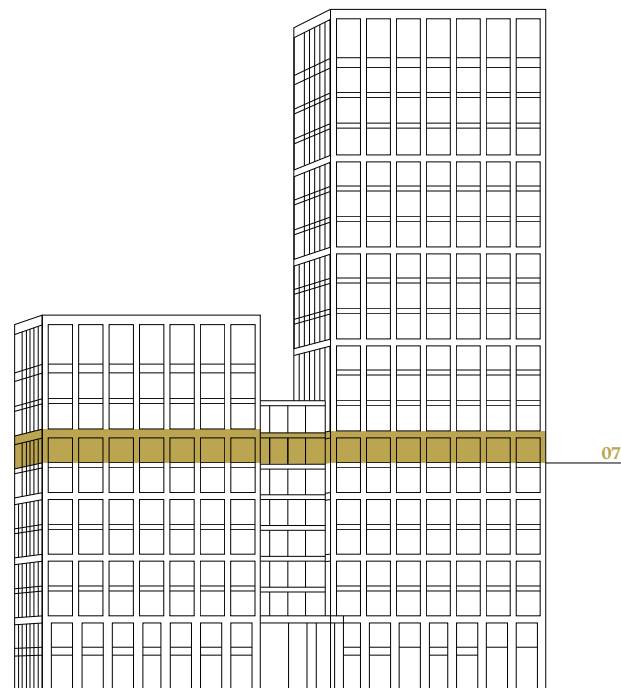
<b>Apartment Type R</b>		
Apartment No.	607	
Floor	6	
<b>Apartment Area</b>	<b>133.5 sq m</b>	<b>1,437.0 sq ft</b>
Living/Kitchen	8.7m x 7.3m	28'07" x 23'11"
Master Bedroom Suite	3.0m x 11.0m	9'10" x 36'01"
Bedroom 2	3.7m x 5.5m	12'01" x 18'01"
Balcony Area	10.5 sq m	113.0 sq ft




THREE BEDROOM APARTMENT

<b>Apartment Type H</b>		
Apartment No.	601	
Floor	6	
<b>Apartment Area</b>	<b>146.9 sq m</b>	<b>1,581.0 sq ft</b>
Living/Kitchen	5.9m x 9.0m	19'05" x 29'07"
Master Bedroom Suite	3.4m x 10.0m	11'02" x 32'10"
Bedroom 2	4.4m x 5.2m	14'06" x 17'00"
Bedroom 3/Study	2.6m x 6.4m	8'07" x 20'11"
Balcony Area	11.7 sq m	126.0 sq ft



## LEVEL 7



- Key**
- C Cupboard  
W Wardrobe  
SC Service Cupboard  
T Terrace  
B Balcony  
JB Juliette Balcony
-  One Bedroom Apartment  
 Two Bedroom Apartment  
 Three Bedroom Apartment



## ONE BEDROOM APARTMENT

<b>Apartment Type B</b>		
Apartment No.	702	
Floor	7	
<b>Apartment Area</b>	<b>57.6 sq m</b>	<b>620.0 sq ft</b>
Living/Kitchen	4.2m x 6.1m	13'10" x 20'01"
Master Bedroom	3.4m x 5.6m	11'02" x 18'05"
Balcony Area	Juliette Balcony	

## TWO BEDROOM APARTMENTS

<b>Apartment Type K</b>		
Apartment No. 704		
Floor 7		
<b>Apartment Area</b>	<b>113.7 sq m</b>	<b>1,224.0 sq ft</b>
Living/Kitchen	6.0m x 7.4m	19'09" x 24'04"
Master Bedroom Suite	3.2m x 10.0m	10'06" x 32'10"
Bedroom 2	4.4m x 3.3m	14'05" x 10'09"
Balcony Area	5.7 sq m	61.0 sq ft

<b>Apartment Type N</b>		
Apartment No.	705	
Floor	7	
<b>Apartment Area</b>	<b>126.4 sq m</b>	<b>1,361.0 sq ft</b>
Living/Kitchen	5.9m x 8.9m	19'05" x 29'03"
Master Bedroom Suite	4.2m x 9.4m	13'10" x 30'10"
Bedroom 2	3.5m x 8.2m	11'06" x 26'11"
Balcony Area	10.3 sq m	111.0 sq ft

<b>Apartment Type P</b>		
Apartment No.	706	
Floor	7	
<b>Apartment Area</b>	<b>94.3 sq m</b>	<b>1,015.0 sq ft</b>
Living/Kitchen	6.2m x 6.4m	20'05" x 20'11"
Master Bedroom Suite	3.3m x 7.5m	10'10" x 24'08"
Bedroom 2	2.8m x 4.6m	9'02" x 15'01"
Balcony Area	Juliette Balcony	

<b>Apartment Type R</b>		
Apartment No.	707	
Floor	7	
<b>Apartment Area</b>	<b>133.5 sq m</b>	<b>1,437.0 sq ft</b>
Living/Kitchen	8.7m x 7.3m	28'07" x 23'11"
Master Bedroom Suite	3.0m x 11.0m	9'10" x 36'01"
Bedroom 2	3.7m x 5.5m	12'01" x 18'01"
Balcony Area	10.5 sq m	113.0 sq ft

### THREE BEDROOM APARTMENT

Apartment Type H		
Apartment No.	701	
Floor	7	
Apartment Area	146.9 sq m	1,581.0 sq ft
Living/Kitchen	5.9m x 9.0m	19'05" x 29'07"
Master Bedroom Suite	3.4m x 10.0m	11'02" x 32'10"
Bedroom 2	4.4m x 5.2m	14'06" x 17'00"
Bedroom 3/Study	2.6m x 6.4m	8'07" x 20'11"
Balcony Area	11.7 sq m	126.0 sq ft

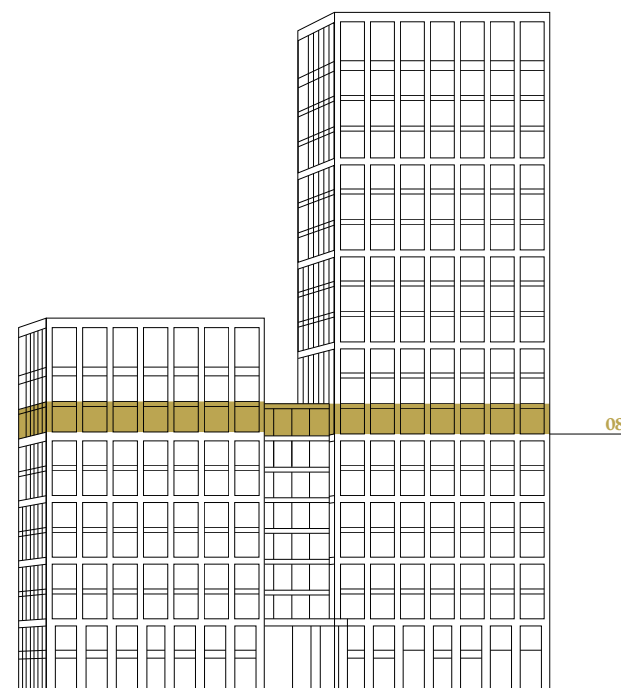
### THREE BEDROOM DUPLEX APARTMENT




<b>Apartment Type M</b>		
Apartment No.	703	
Floor	7	
<b>Apartment Area</b>	<b>159.4 sq m</b>	<b>1,716.0 sq ft</b>
Living/Kitchen	10.3m x 8.0m	33'09" x 26'03"
Master Bedroom Suite 1	8.4m x 3.9m	27'06" x 12'10"
Master Bedroom Suite 2	4.2m x 7.2m	13'10" x 23'08"
Bedroom 3	3.1m x 5.7m	10'02" x 18'09"
Balcony Area	Juliette Balcony	

Floorplans shown for Belvedere Gardens are approximate measurements only. Floorplans are not to scale. Exact layout and sizes may vary.



## LEVEL 8



- Key**
- C Cupboard  
W Wardrobe  
SC Service Cupboard  
T Terrace  
B Balcony  
JB Juliette Balcony
-  One Bedroom Apartment  
 Two Bedroom Apartment  
 Three Bedroom Apartment



## ONE BEDROOM APARTMENTS

Apartment Type B		
Apartment No.	802	
Floor	8	
Apartment Area	57.6 sq m	620.0 sq ft
Living/Kitchen	4.2m x 6.1m	13'10" x 20'01"
Master Bedroom	3.4m x 5.6m	11'02" x 18'05"
Balcony Area	Juliette Balcony	

<b>Apartment Type C</b>		
Apartment No.	803	
Floor	8	
<b>Apartment Area</b>	<b>60.3 sq m</b>	<b>649.0 sq ft</b>
Living/Kitchen	4.2m x 6.7m	13'10" x 20'11"
Master Bedroom	3.1m x 6.2m	10'02" x 20'05"
Balcony Area	Juliette Balcony	

## TWO BEDROOM APARTMENTS

Apartment Type K		
Apartment No.	804	
Floor	8	
Apartment Area	113.7 sq m	1,224.0 sq ft
Living/Kitchen	6.0m x 7.4m	19'09" x 24'04"
Master Bedroom Suite	3.2m x 10.0m	10'06" x 32'10"
Bedroom 2	4.4m x 3.3m	14'05" x 10'09"
Balcony Area	5.7 sq m	61.0 sq ft

<b>Apartment Type N</b>		
Apartment No.	805	
Floor	8	
<b>Apartment Area</b>	<b>126.4 sq m</b>	<b>1,361.0 sq ft</b>
Living/Kitchen	5.9m x 8.9m	19'05" x 29'03"
Master Bedroom Suite	4.2m x 9.4m	13'10" x 30'10"
Bedroom 2	3.5m x 8.2m	11'06" x 26'11"
Balcony Area	10.3 sq m	111.0 sq ft

<b>Apartment Type P</b>		
Apartment No.	806	
Floor	8	
<b>Apartment Area</b>	<b>94.3 sq m</b>	<b>1,015.0 sq ft</b>
Living/Kitchen	6.2m x 6.4m	20'05" x 20'11"
Master Bedroom Suite	3.3m x 7.5m	10'10" x 24'08"
Bedroom 2	2.8m x 4.6m	9'02" x 15'01"
Balcony Area	Juliette Balcony	

<b>Apartment Type R</b>		
Apartment No.	807	
Floor	8	
<b>Apartment Area</b>	<b>133.5 sq m</b>	<b>1,437.0 sq ft</b>
Living/Kitchen	8.7m x 7.3m	28'07" x 23'11"
Master Bedroom Suite	3.0m x 11.0m	9'10" x 36'01"
Bedroom 2	3.7m x 5.5m	12'01" x 18'01"
Balcony Area	10.5 sq m	113.0 sq ft

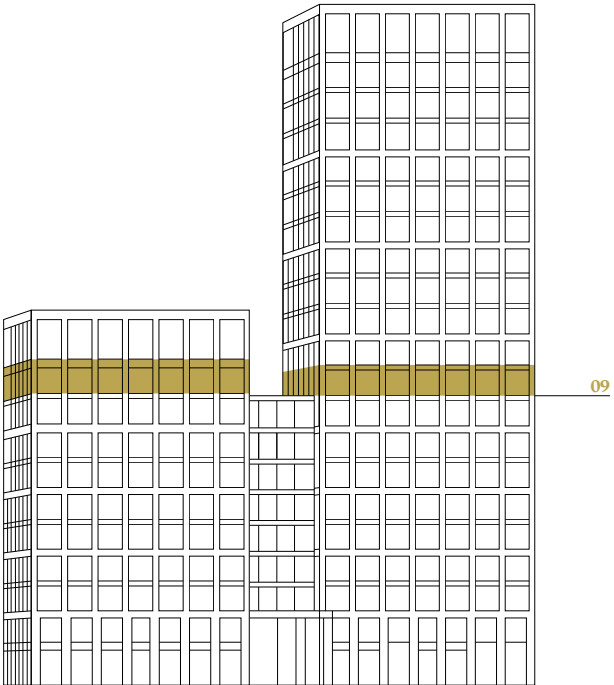
### THREE BEDROOM APARTMENT

<b>Apartment Type H</b>		
Apartment No.	801	
Floor	8	
<b>Apartment Area</b>	<b>146.9 sq m</b>	<b>1,581.0 sq ft</b>
Living/Kitchen	5.9m x 9.0m	19'05" x 29'07"
Master Bedroom Suite	3.4m x 10.0m	11'02" x 32'10"
Bedroom 2	4.4m x 5.2m	14'06" x 17'00"
Bedroom 3/Study	2.6m x 6.4m	8'07" x 20'11"
Balcony Area	11.7 sq m	126.0 sq ft

Floorplans shown for Belvedere Gardens are approximate measurements only. Floorplans are not to scale. Exact layout and sizes may vary.



LEVEL 9



- Key**
- C Cupboard
  - W Wardrobe
  - SC Service Cupboard
  - T Terrace
  - B Balcony
  - JB Juliette Balcony
- One Bedroom Apartment
  - Two Bedroom Apartment
  - Three Bedroom Apartment



ONE BEDROOM APARTMENTS

<b>Apartment Type B</b>		
Apartment No.	902	
Floor	9	
<b>Apartment Area</b>	<b>57.6 sq m</b>	<b>620.0 sq ft</b>
Living/Kitchen	4.2m x 6.1m	13'10" x 20'01"
Master Bedroom	3.4m x 5.6m	11'02" x 18'05"
Balcony Area	Juliette Balcony	

<b>Apartment Type C</b>		
Apartment No.	903	
Floor	9	
<b>Apartment Area</b>	<b>60.3 sq m</b>	<b>649.0 sq ft</b>
Living/Kitchen	4.2m x 6.7m	13'10" x 20'11"
Master Bedroom	3.1m x 6.2m	10'02" x 20'05"
Balcony Area	Juliette Balcony	

TWO BEDROOM APARTMENT

<b>Apartment Type K</b>		
Apartment No.	904	
Floor	9	
<b>Apartment Area</b>	<b>113.7 sq m</b>	<b>1,224.0 sq ft</b>
Living/Kitchen	6.0m x 7.4m	19'09" x 24'04"
Master Bedroom Suite	3.2m x 10.0m	10'06" x 32'10"
Bedroom 2	4.4m x 3.3m	14'05" x 10'09"
Balcony Area	5.7 sq m	61.0 sq ft

THREE BEDROOM APARTMENTS

<b>Apartment Type H</b>		
Apartment No.	901	
Floor	9	
<b>Apartment Area</b>	<b>146.9 sq m</b>	<b>1,581.0 sq ft</b>
Living/Kitchen	5.9m x 9.0m	19'05" x 29'07"
Master Bedroom Suite	3.4m x 10.0m	11'02" x 32'10"
Bedroom 2	4.4m x 5.2m	14'06" x 17'00"
Bedroom 3/Study	2.6m x 6.4m	8'07" x 20'11"
Balcony Area	11.7 sq m	126.0 sq ft

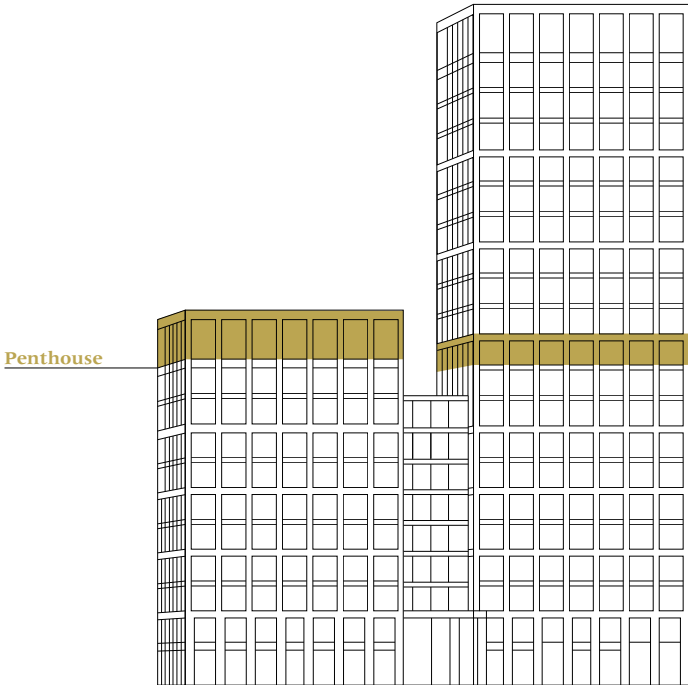
<b>Apartment Type S</b>		
Apartment No.	905	
Floor	9	
<b>Apartment Area</b>	<b>184.8 sq m</b>	<b>1,989.0 sq ft</b>
Living/Kitchen	6.2m x 15.0m	20'05" x 49'03"
Master Bedroom Suite	4.4m x 9.0m	14'06" x 29'07"
Bedroom 2	4.2m x 6.9m	13'10" x 22'08"
Bedroom 3	3.4m x 6.9m	11'11" x 22'08"
Balcony	7.56 sq m	94.0 sq ft
Private Terrace	74.1 sq m	798.0 sq ft

<b>Apartment Type T</b>		
Apartment No.	906	
Floor	9	
<b>Apartment Area</b>	<b>175.3 sq m</b>	<b>1,887.0 sq ft</b>
Living/Kitchen	6.1m x 12.0m	20'00" x 39'05"
Master Bedroom Suite	4.7m x 9.2m	15'05" x 30'03"
Bedroom 2	3.3m x 6.9m	10'10" x 22'08"
Bedroom 3	4.0m x 5.3m	13'02" x 17'05"
Balcony Area	17.2 sq m	185.0 sq ft

Floorplans shown for Belvedere Gardens are approximate measurements only. Floorplans are not to scale. Exact layout and sizes may vary.



LEVEL 10 AND PENTHOUSE



- Key**
- C Cupboard
  - W Wardrobe
  - SC Service Cupboard
  - T Terrace
  - B Balcony
  - JB Juliette Balcony
- 
- One Bedroom Apartment
  - Two Bedroom Apartment
  - Three Bedroom Apartment
  - Penthouse



ONE BEDROOM APARTMENTS

<b>Apartment Type B</b>		
Apartment No.	1002	
Floor	10	
<b>Apartment Area</b>	<b>57.6 sq m</b>	<b>620.0 sq ft</b>
Living/Kitchen	4.2m x 6.1m	13'10" x 20'01"
Master Bedroom	3.4m x 5.6m	11'02" x 18'05"
Balcony Area	Juliette Balcony	

<b>Apartment Type C</b>		
Apartment No.	1003	
Floor	10	
<b>Apartment Area</b>	<b>60.3 sq m</b>	<b>649.0 sq ft</b>
Living/Kitchen	4.2m x 6.7m	13'10" x 20'11"
Master Bedroom	3.1m x 6.2m	10'02" x 20'05"
Balcony Area	Juliette Balcony	

TWO BEDROOM APARTMENT

<b>Apartment Type K</b>		
Apartment No.	1004	
Floor	10	
<b>Apartment Area</b>	<b>113.7 sq m</b>	<b>1,224.0 sq ft</b>
Living/Kitchen	6.0m x 7.4m	19'09" x 24'04"
Master Bedroom Suite	3.2m x 10.0m	10'06" x 32'10"
Bedroom 2	4.4m x 3.3m	14'05" x 10'09"
Balcony Area	5.7 sq m	61.0 sq ft

THREE BEDROOM APARTMENT

<b>Apartment Type H</b>		
Apartment No.	1001	
Floor	10	
<b>Apartment Area</b>	<b>146.9 sq m</b>	<b>1,581.0 sq ft</b>
Living/Kitchen	5.9m x 9.0m	19'05" x 29'07"
Master Bedroom Suite	3.4m x 10.0m	11'02" x 32'10"
Bedroom 2	4.4m x 5.2m	14'06" x 17'00"
Bedroom 3/Study	2.6m x 6.4m	8'07" x 20'11"
Balcony Area	11.7 sq m	126.0 sq ft

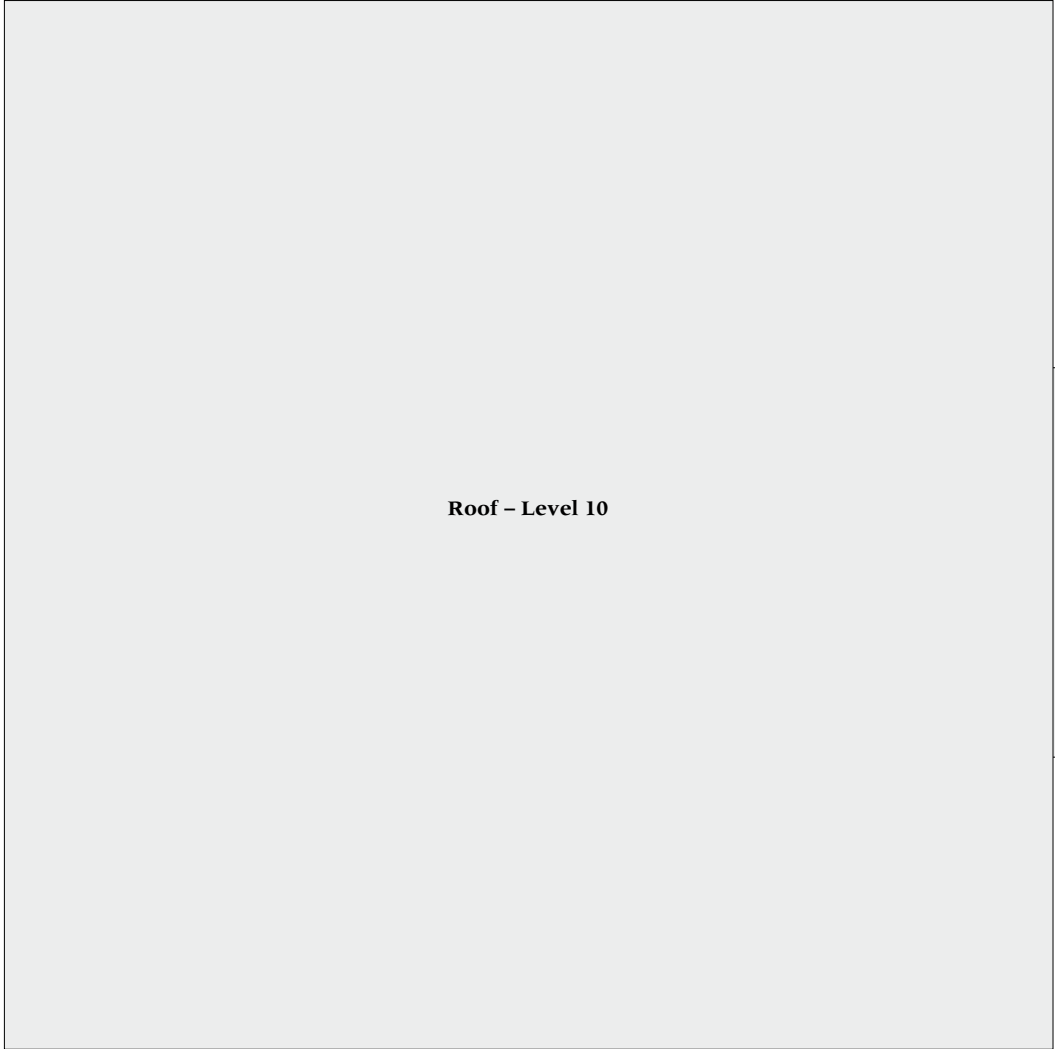
THREE BEDROOM PENTHOUSE

<b>Apartment Type P2</b>		
Apartment No.	1005	
Floor	10	
<b>Apartment Area</b>	<b>358.8 sq m</b>	<b>3,862.0 sq ft</b>
Living	9.5m x 8.5m	31'02" x 27'10"
Show Kitchen/Dining	10.3m x 6.1m	33'09" x 20'02"
Master Bedroom Suite 1	5.6m x 12.0m	18'05" x 39'05"
Master Bedroom Suite 2	7.8m x 8.0m	25'08" x 26'03"
Bedroom 3	7.5m x 3.1m	24'08" x 10'06"
Terrace Area	39.7 sq m	427.0 sq ft



# LEVELS 11, 12, 13

Views overlooking  
Jubilee Gardens &  
River Thames



Views overlooking  
Jubilee Gardens &  
River Thames

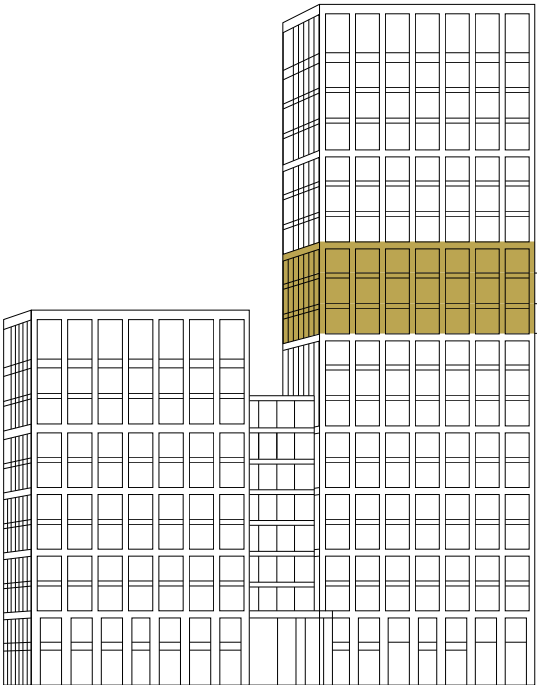


## TWO BEDROOM APARTMENTS

Apartment Type W			
Apartment No.	1101	1201	1301
Floor	11	12	13
Apartment Area	132.1 sq m	1,422.0 sq ft	
Living/Kitchen	5.9m x 10.0m	19'05" x 32'10"	
Master Bedroom Suite	4.2m x 9.4m	13'10" x 30'01"	
Bedroom 2	3.5m x 8.1m	11'06" x 26'07"	
Balcony Area	10.9 sq m	117.0 sq ft	

Apartment Type X			
Apartment No.	1102	1202	1302
Floor	11	12	13
Apartment Area	96.1 sq m		1,034.0 sq ft
Living/Kitchen	6.4m x 6.5m		20'11" x 21'03"
Master Bedroom Suite	3.2m x 7.5m		10'05" x 24'08"
Bedroom 2	2.8m x 4.7m		9'02" x 15'05"
Balcony Area	Juliette Balcony		

Apartment Type Y			
Apartment No.	1103	1203	1303
Floor	11	12	13
Apartment Area	146.2 sq m	1,574.0 sq ft	
Living/Kitchen	8.7m x 7.9m	28'06" x 25'11"	
Master Bedroom Suite	3.1m x 12.0m	10'02" x 39'05"	
Bedroom 2	3.5m x 6.5m	11'06" x 21'04"	
Balcony Area	11.1 sq m	119.0 sq ft	



- Key**
- C Cupboard
  - W Wardrobe
  - SC Service Cupboard
  - B Balcony
  - JB Juliette Balcony
  - Two Bedroom Apartment

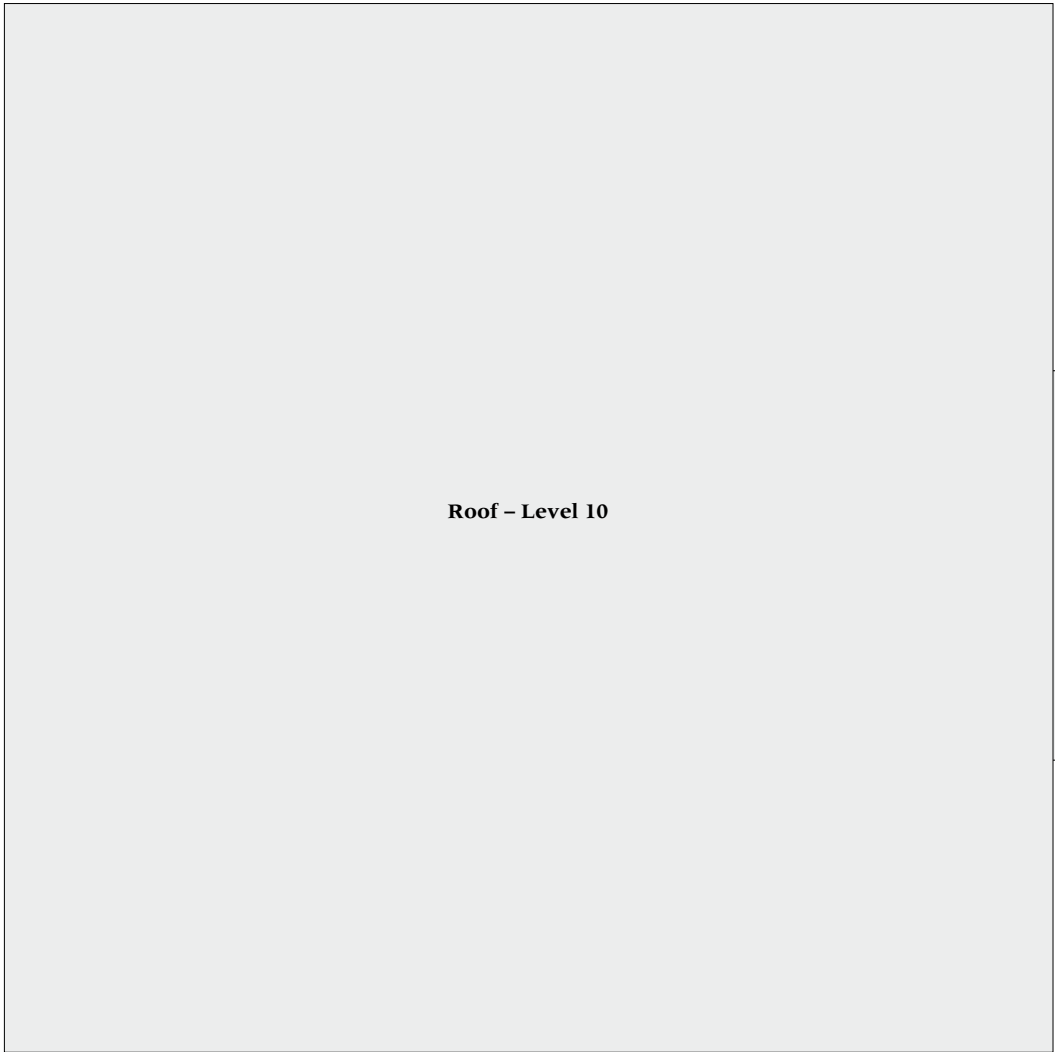


Floorplans shown for Belvedere Gardens are approximate measurements only. Floorplans are not to scale. Exact layout and sizes may vary.



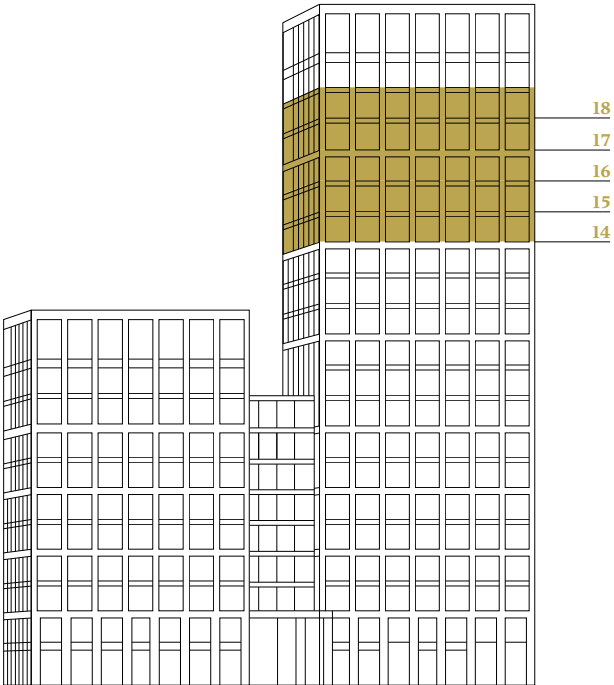
# LEVELS 14, 15, 16, 17, 18

Views overlooking  
Jubilee Gardens &  
River Thames



Roof – Level 10

Views overlooking  
Jubilee Gardens &  
River Thames



- Key**
- C Cupboard
  - W Wardrobe
  - SC Service Cupboard
  - B Balcony
  - JB Juliette Balcony
- Two Bedroom Apartment



## TWO BEDROOM APARTMENTS

Apartment Type W						
Apartment No.	1401	1501	1601	1701	1801	
Floor	14	15	16	17	18	
Apartment Area	132.1 sq m		1,422.0 sq ft			
Living/Kitchen	5.9m x 10.0m		19'05" x 32'10"			
Master Bedroom Suite	4.2m x 9.4m		13'10" x 30'01"			
Bedroom 2	3.5m x 8.1m		11'06" x 26'07"			
Balcony Area	10.9 sq m		117.0 sq ft			

Apartment Type X						
Apartment No.	1402	1502	1602	1702	1802	
Floor	14	15	16	17	18	
Apartment Area	96.1 sq m		1,034.0 sq ft			
Living/Kitchen	6.4m x 6.5m		20'11" x 21'03"			
Master Bedroom Suite	3.2m x 7.5m		10'05" x 24'08"			
Bedroom 2	2.8m x 4.7m		9'02" x 15'05"			
Balcony Area	Juliette Balcony					

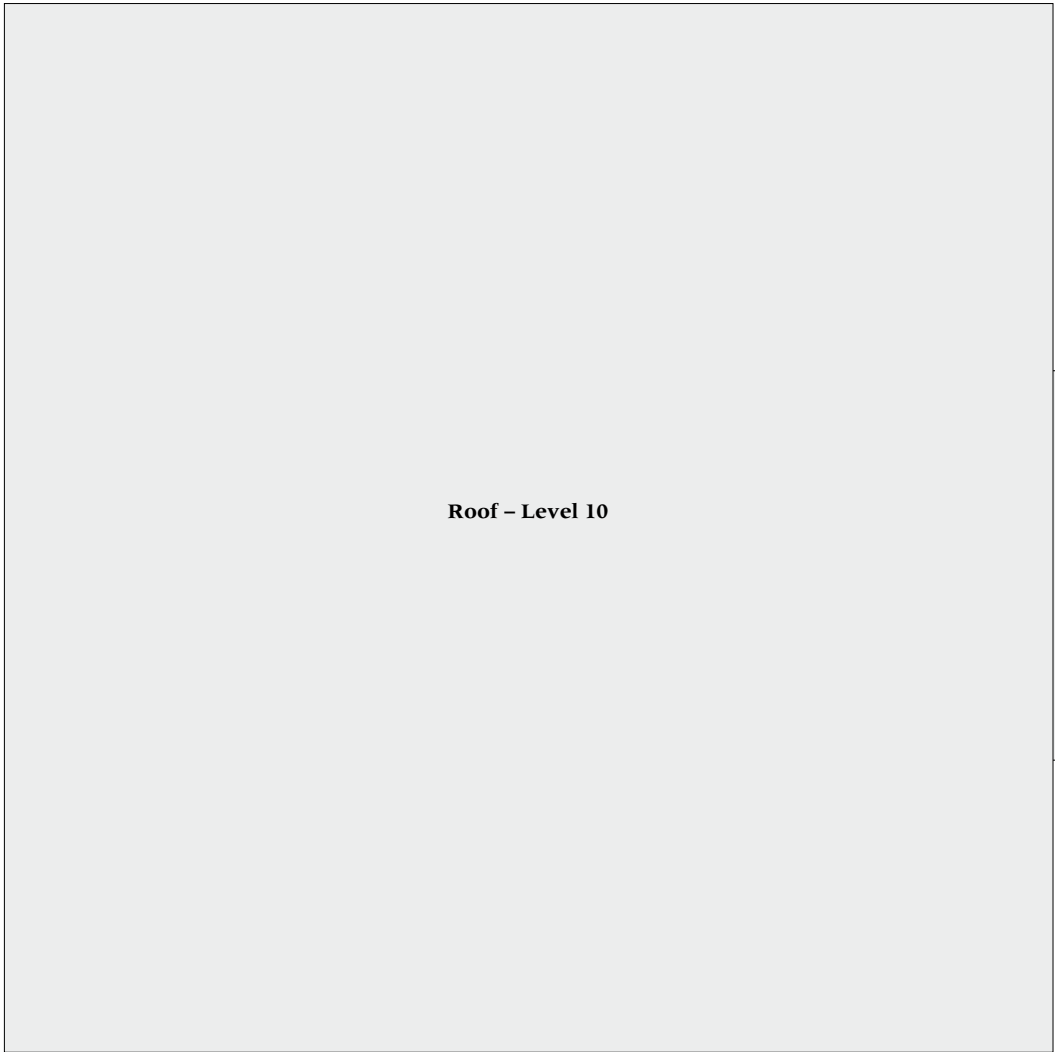
Apartment Type Y						
Apartment No.	1403	1503	1603	1703	1803	
Floor	14	15	16	17	18	
Apartment Area	146.5 sq m		1,577.0 sq ft			
Living/Kitchen	8.7m x 7.9m		28'06" x 25'11"			
Master Bedroom Suite	3.1m x 12.0m		10'02" x 39'05"			
Bedroom 2	3.5m x 6.5m		11'06" x 21'04"			
Balcony Area	11.1 sq m		119.0 sq ft			

Floorplans shown for Belvedere Gardens are approximate measurements only. Floorplans are not to scale. Exact layout and sizes may vary.



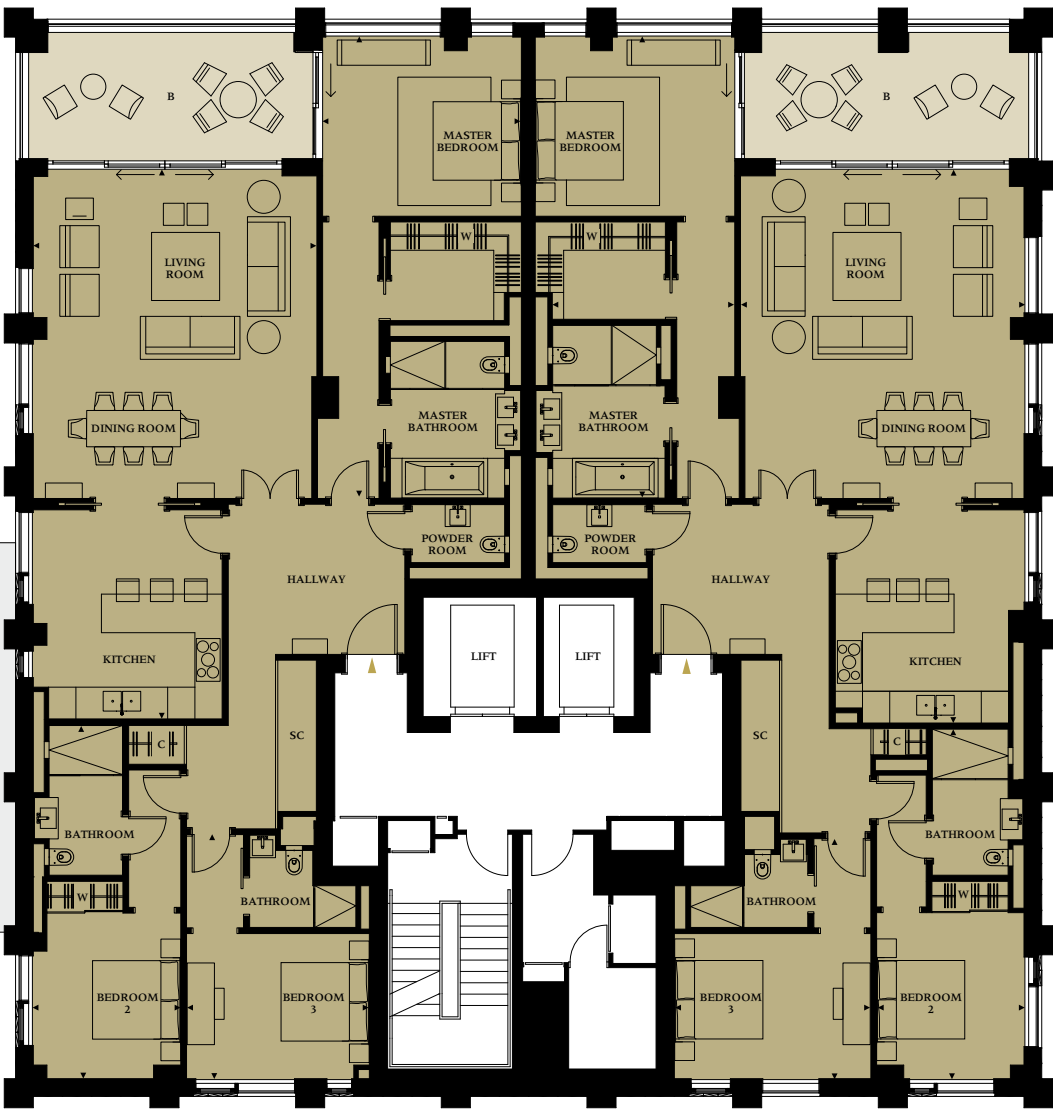
LEVEL 19

Views overlooking  
Jubilee Gardens &  
River Thames



Views overlooking  
Jubilee Gardens &  
River Thames

Type Z2  
1902

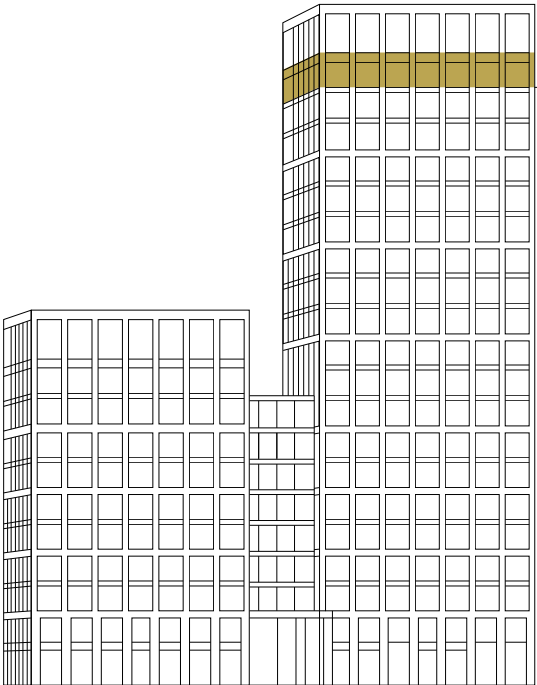


Type Z1  
1901

THREE BEDROOM APARTMENTS

<b>Apartment Type Z1</b>		
Apartment No.	1901	
Floor	19	
<b>Apartment Area</b>	<b>186.2 sq m</b>	<b>2,004.0 sq ft</b>
Living/Kitchen	6.3m x 12.1m	20'08" x 39'08"
Master Bedroom Suite	4.4m x 10.1m	14'05" x 33'01"
Bedroom 2	3.3m x 7.7m	10'10" x 25'03"
Bedroom 3	4.3m x 5.3m	14'02" x 17'04"
Balcony Area	18.0 sq m	194.0 sq ft

<b>Apartment Type Z2</b>		
Apartment No.	1902	
Floor	19	
<b>Apartment Area</b>	<b>184.8 sq m</b>	<b>1,989.0 sq ft</b>
Living/Kitchen	6.3m x 12.1m	20'08" x 39'08"
Master Bedroom Suite	4.4m x 10.1m	14'05" x 33'01"
Bedroom 2	3.3m x 7.7m	10'09" x 25'03"
Bedroom 3	4.0m x 5.3m	13'02" x 17'05"
Balcony Area	18.4 sq m	198.0 sq ft



C

W

SC

B

Cupboard

Wardrobe

Service Cupboard

Balcony

Three Bedroom Apartment



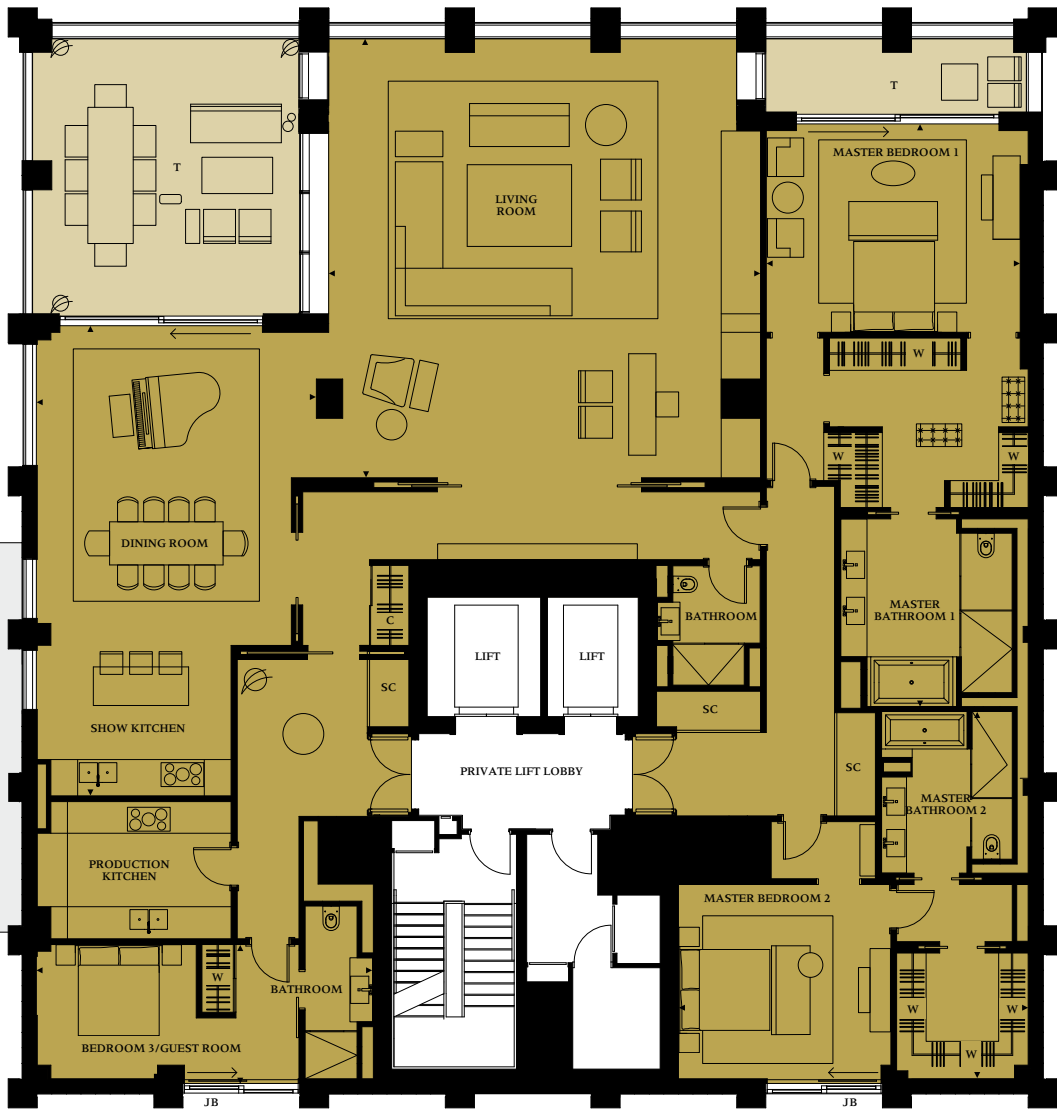
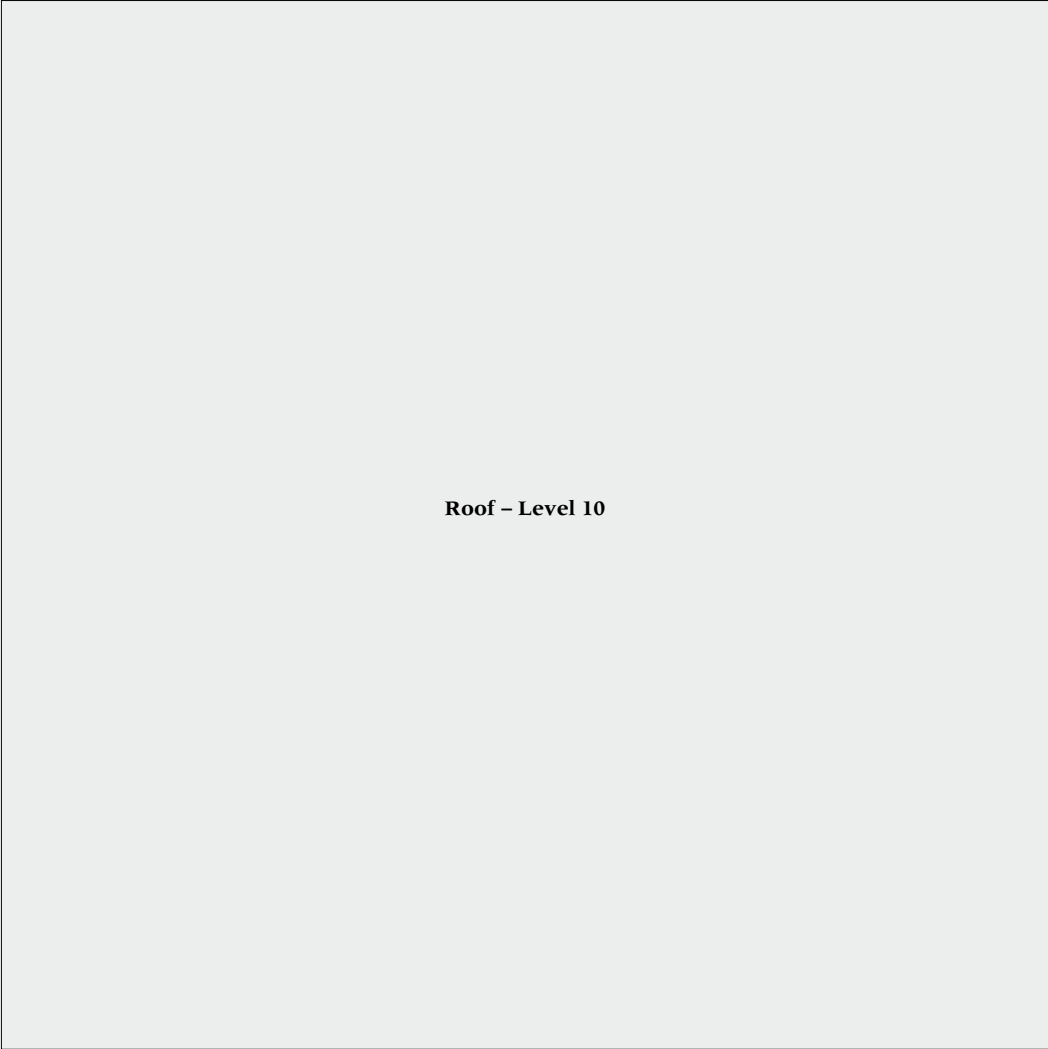
Floorplans shown for Belvedere Gardens are approximate measurements only. Floorplans are not to scale. Exact layout and sizes may vary.



LEVEL 20  
PENTHOUSE

Views overlooking  
Jubilee Gardens &  
River Thames

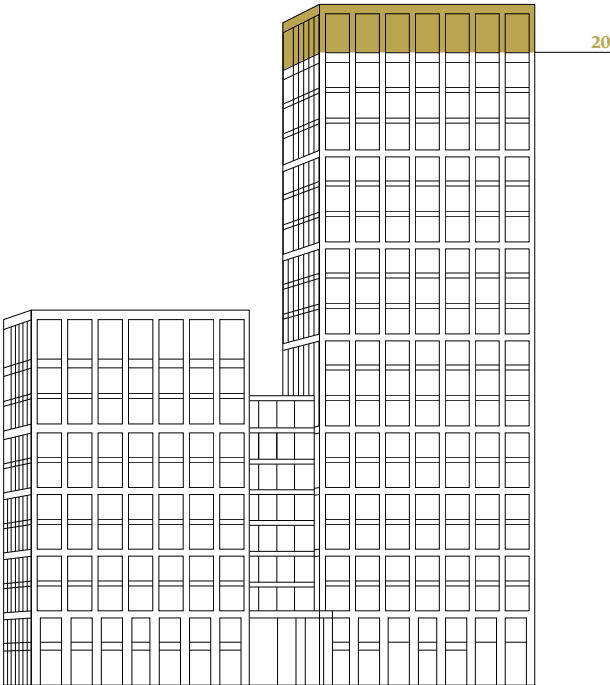
Views overlooking  
Jubilee Gardens &  
River Thames



Type P1  
2001

THREE BEDROOM PENTHOUSE

<b>Apartment Type P1</b>		
Apartment No.	2001	
Floor	20	
<b>Apartment Area</b>	<b>374.4 sq m</b>	<b>4,030 sq ft</b>
Living Room	9.5m x 9.7m	31'02" x 31'09"
Dining/Kitchen	10.4m x 6.2m	34'01" x 20'04"
Master Bedroom Suite 1	5.6m x 13.0m	18'05" x 42'08"
Master Bedroom Suite 2	7.8m x 8.0m	25'08" x 26'03"
Bedroom 3/Guest Bedroom	7.4m x 3.1m	24'04" x 10'03"
Terrace Area	46.3 sq m	493 sq ft



- Key**
- C Cupboard
  - W Wardrobe
  - SC Service Cupboard
  - T Terrace
  - JB Juliette Balcony
  - Penthouse



Floorplans shown for Belvedere Gardens are approximate measurements only.  
Floorplans are not to scale. Exact layout and sizes may vary.



# ONE BEDROOM APARTMENTS

## Apartment Type B

Living/Kitchen		4.2m x 6.1m		13'10" x 20'01"
Master Bedroom		3.4m x 5.6m		11'02" x 18'05"
Floor	Apt. No.	Apartment Area		Juliette Balcony
1	102	57.6 sq m	620.0 sq ft	✓
2	202	57.6 sq m	620.0 sq ft	✓
3	302	57.6 sq m	620.0 sq ft	✓
4	402	57.6 sq m	620.0 sq ft	✓
5	502	57.6 sq m	620.0 sq ft	✓
6	602	57.6 sq m	620.0 sq ft	✓
7	702	57.6 sq m	620.0 sq ft	✓
8	802	57.6 sq m	620.0 sq ft	✓
9	902	57.6 sq m	620.0 sq ft	✓
10	1002	57.6 sq m	620.0 sq ft	✓



## Apartment Type C

Living/Kitchen		4.2m x 6.7m		13'10" x 20'11"	
Master Bedroom		3.1m x 6.2m		10'02" x 20'05"	
Floor	Apt. No.	Apartment Area		Juliette Balcony	
1	103	60.3 sq m	649.0 sq ft	Balcony Area	13.9 sq m 150.0 sq ft
8	803	60.3 sq m	649.0 sq ft	✓	
9	903	60.3 sq m	649.0 sq ft	✓	
10	1003	60.3 sq m	649.0 sq ft	✓	



## Apartment Type D

Living/Kitchen		4.0m x 7.1m		13'01" x 23'03"	
Master Bedroom Suite		3.2m x 10.9m		10'06" x 35'10"	
Floor	Apt. No.	Apartment Area		Balcony Area	
1	104	77.1 sq m	830.0 sq ft	15.7 sq m	169.0 sq ft



Floorplans shown for Belvedere Gardens are approximate measurements only. Floorplans are not to scale. Exact layout and sizes may vary.



Apartment Type B



Apartment Type C\*



Apartment Type D

- Key**
- C Cupboard
  - W Wardrobe
  - SC Service Cupboard
  - T Terrace
  - B Balcony
  - JB Juliette Balcony



\*Glazing arrangement to Living Room and Master Bedroom different at level 1. See pages 26/27 for relevant floorplan.



# ONE BEDROOM APARTMENTS

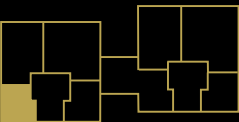
## Apartment Type E

Living/Kitchen		4.2m x 6.7m		13'10" x 20'11"	
Master Bedroom		3.4m x 6.2m		11'02" x 20'05"	
Floor	Apt. No.	Apartment Area		Juliette Balcony	
1	105	62.2 sq m	670.0 sq ft	Balcony Area 18.1 sq m	195.0 sq ft
2	206	62.3 sq m	671.0 sq ft		✓
3	306	62.3 sq m	671.0 sq ft		✓
4	406	62.3 sq m	671.0 sq ft		✓



## Apartment Type F

Living/Kitchen		4.1m x 5.7m		13'15" x 18'08"	
Master Bedroom		3.1m x 5.3m		10'02" x 17'04"	
Floor	Apt. No.	Apartment Area		Juliette Balcony	
1	106	54.8 sq m	590.0 sq ft		✓
2	207	54.8 sq m	590.0 sq ft		✓
3	307	54.8 sq m	590.0 sq ft		✓
4	407	54.8 sq m	590.0 sq ft		✓



Floorplans shown for Belvedere Gardens are approximate measurements only.  
Floorplans are not to scale. Exact layout and sizes may vary.



Apartment Type E\*



Apartment Type F\*\*

- Key**
- C Cupboard
  - W Wardrobe
  - SC Service Cupboard
  - T Terrace
  - B Balcony
  - JB Juliette Balcony



\*Glazing arrangement to Living Room different at level 1.  
See pages 26/27 for relevant floorplan.  
\*\*Glazing arrangement to Master Bedroom different at level 1.  
See pages 26/27 for relevant floorplan.

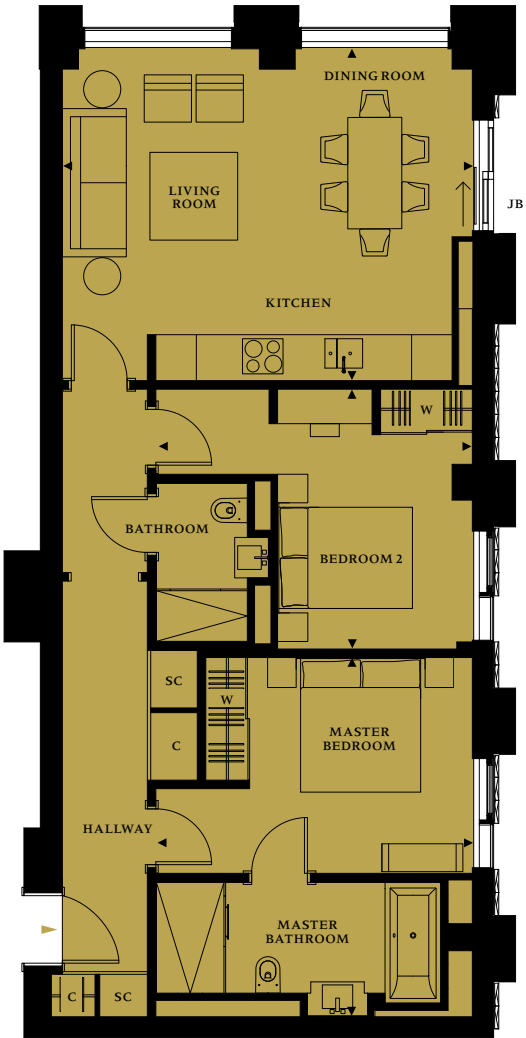
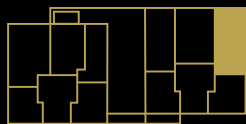


# TWO BEDROOM APARTMENT

## Apartment Type A

Living/Kitchen		6.1m x 4.9m	20'01" x 16'00"
Master Bedroom Suite		4.6m x 5.3m	15'01" x 17'04"
Bedroom 2		4.6m x 3.8m	15'01" x 12'05"
Floor	Apt. No.	Apartment Area	
1	101	86.1 sq m	927.0 sq ft

Juliette Balcony



Apartment Type A

### Key

- C Cupboard
- W Wardrobe
- SC Service Cupboard
- T Terrace
- B Balcony
- JB Juliette Balcony



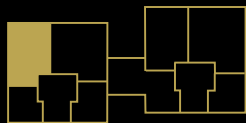
Floorplans shown for Belvedere Gardens are approximate measurements only.  
Floorplans are not to scale. Exact layout and sizes may vary.



# TWO BEDROOM APARTMENTS

## Apartment Type G

Living/Kitchen		6.0m x 7.2m		19'09" x 23'08"	
Master Bedroom Suite		3.2m x 9.1m		10'06" x 29'11"	
Bedroom 2		4.3m x 3.3m		14'02" x 10'09"	
Floor	Apt. No.	Apartment Area		Balcony Area	
1	107	110.5 sq m	1,189.0 sq ft	5.0 sq m	54.0 sq ft
2	208	110.5 sq m	1,189.0 sq ft	5.0 sq m	54.0 sq ft
3	308	110.5 sq m	1,189.0 sq ft	5.0 sq m	54.0 sq ft
4	408	110.5 sq m	1,189.0 sq ft	5.0 sq m	54.0 sq ft



## Apartment Type L

Living/Kitchen		4.9m x 10.7m		16'00" x 35'02"	
Master Bedroom Suite		3.6m x 11.0m		11'10" x 36'02"	
Bedroom 2		3.5m x 7.4m		11'06" x 24'04"	
Floor	Apt. No.	Apartment Area		Balcony Area	
2	205	132.9 sq m	1,431.0 sq ft	8.0 sq m	86.0 sq ft
3	305	132.9 sq m	1,431.0 sq ft	8.0 sq m	86.0 sq ft
4	405	132.9 sq m	1,431.0 sq ft	8.0 sq m	86.0 sq ft



Floorplans shown for Belvedere Gardens are approximate measurements only. Floorplans are not to scale. Exact layout and sizes may vary.



Apartment Type G



Apartment Type L

- Key**
- C Cupboard
  - W Wardrobe
  - SC Service Cupboard
  - T Terrace
  - B Balcony
  - JB Juliette Balcony





# TWO BEDROOM APARTMENTS

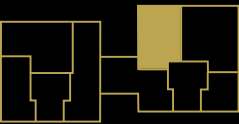
## Apartment Type J

Living/Kitchen		10.3m x 8.1m		33'09" x 26'07"
Master Bedroom Suite		4.1m x 7.2m		13'06" x 23'08"
Bedroom 2		3.1m x 5.8m		10'02" x 19'00"
Floor	Apt. No.	Apartment Area		Juliette Balcony
2	203	128.0 sq m	1,378.0 sq ft	✓
3	303	128.0 sq m	1,378.0 sq ft	✓
4	403	128.0 sq m	1,378.0 sq ft	✓
5	503	128.0 sq m	1,378.0 sq ft	✓
6	603	128.0 sq m	1,378.0 sq ft	✓



## Apartment Type K

Living/Kitchen		6.0m x 7.4m		19'09" x 24'04"	
Master Bedroom Suite		3.2m x 10.0m		10'06" x 32'10"	
Bedroom 2		4.4m x 3.3m		14'05" x 10'09"	
Floor	Apt. No.	Apartment Area		Balcony Area	
2	204	113.7 sq m	1,224.0 sq ft	5.7 sq m	61.0 sq ft
3	304	113.7 sq m	1,224.0 sq ft	5.7 sq m	61.0 sq ft
4	404	113.7 sq m	1,224.0 sq ft	5.7 sq m	61.0 sq ft
5	504	113.7 sq m	1,224.0 sq ft	5.7 sq m	61.0 sq ft
6	604	113.7 sq m	1,224.0 sq ft	5.7 sq m	61.0 sq ft
7	704	113.7 sq m	1,224.0 sq ft	5.7 sq m	61.0 sq ft
8	804	113.7 sq m	1,224.0 sq ft	5.7 sq m	61.0 sq ft
9	904	113.7 sq m	1,224.0 sq ft	5.7 sq m	61.0 sq ft
10	1004	113.7 sq m	1,224.0 sq ft	5.7 sq m	61.0 sq ft



Floorplans shown for Belvedere Gardens are approximate measurements only. Floorplans are not to scale. Exact layout and sizes may vary.



Apartment Type J



Apartment Type K

- Key**
- C Cupboard
  - W Wardrobe
  - SC Service Cupboard
  - T Terrace
  - B Balcony
  - JB Juliette Balcony





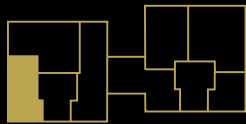
# TWO BEDROOM APARTMENTS

## Apartment Type N

Living/Kitchen		5.9m x 8.9m		19'05" x 29'03"	
Master Bedroom Suite		4.2m x 9.4m		13'10" x 30'10"	
Bedroom 2		3.5m x 8.2m		11'06" x 26'11"	
Floor	Apt. No.	Apartment Area		Balcony Area	
5	505	126.4 sq m	1,361.0 sq ft	10.3 sq m	111.0 sq ft
6	605	126.4 sq m	1,361.0 sq ft	10.3 sq m	111.0 sq ft
7	705	126.4 sq m	1,361.0 sq ft	10.3 sq m	111.0 sq ft
8	805	126.4 sq m	1,361.0 sq ft	10.3 sq m	111.0 sq ft

## Apartment Type P

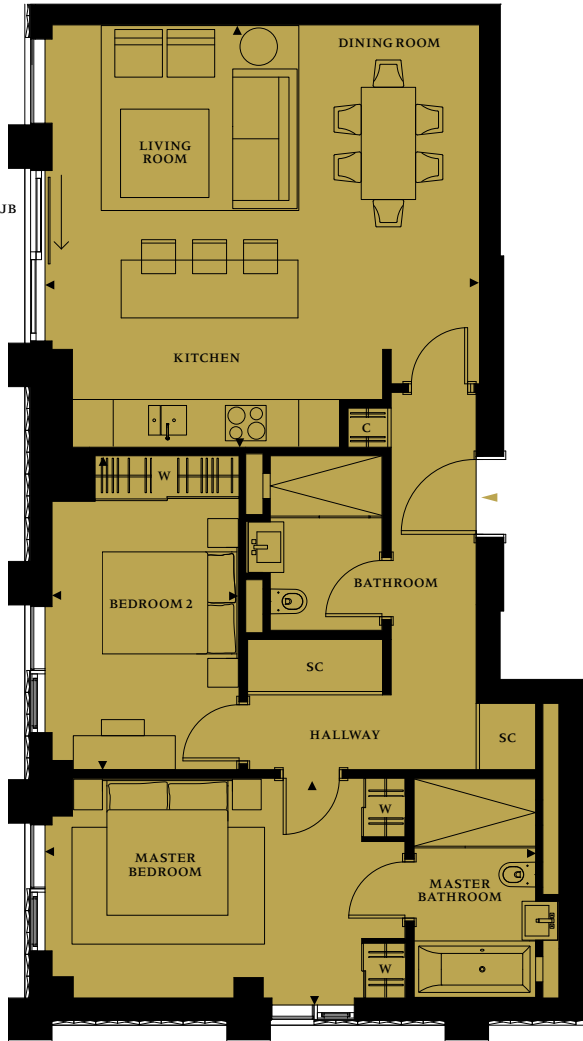
Living/Kitchen		6.2m x 6.4m		20'05" x 20'11"	
Master Bedroom Suite		3.3m x 7.5m		10'10" x 22'08"	
Bedroom 2		2.8m x 4.6m		9'02" x 15'01"	
Floor	Apt. No.	Apartment Area		Juliette Balcony	
5	506	94.3 sq m	1,015.0 sq ft	✓	
6	606	94.3 sq m	1,015.0 sq ft	✓	
7	706	94.3 sq m	1,015.0 sq ft	✓	
8	806	94.3 sq m	1,015.0 sq ft	✓	



Floorplans shown for Belvedere Gardens are approximate measurements only.  
Floorplans are not to scale. Exact layout and sizes may vary.



Apartment Type N



Apartment Type P

- Key**
- C Cupboard
  - W Wardrobe
  - SC Service Cupboard
  - T Terrace
  - B Balcony
  - JB Juliette Balcony





# TWO BEDROOM APARTMENT

## Apartment Type R

Living/Kitchen		8.7m x 7.3m		28'07" x 23'11"	
Master Bedroom Suite		3.0m x 11.0m		9'10" x 36'01"	
Bedroom 2		3.7m x 5.5m		12'01" x 18'01"	
Floor	Apt. No.	Apartment Area		Balcony Area	
5	507	133.3 sq m	1,435.0 sq ft	10.5 sq m	113.0 sq ft
6	607	133.5 sq m	1,437.0 sq ft	10.5 sq m	113.0 sq ft
7	707	133.5 sq m	1,437.0 sq ft	10.5 sq m	113.0 sq ft
8	807	133.5 sq m	1,437.0 sq ft	10.5 sq m	113.0 sq ft



Apartment Type R

Floorplans shown for Belvedere Gardens are approximate measurements only. Floorplans are not to scale. Exact layout and sizes may vary.

- Key
- C Cupboard
  - W Wardrobe
  - SC Service Cupboard
  - T Terrace
  - B Balcony
  - JB Juliette Balcony

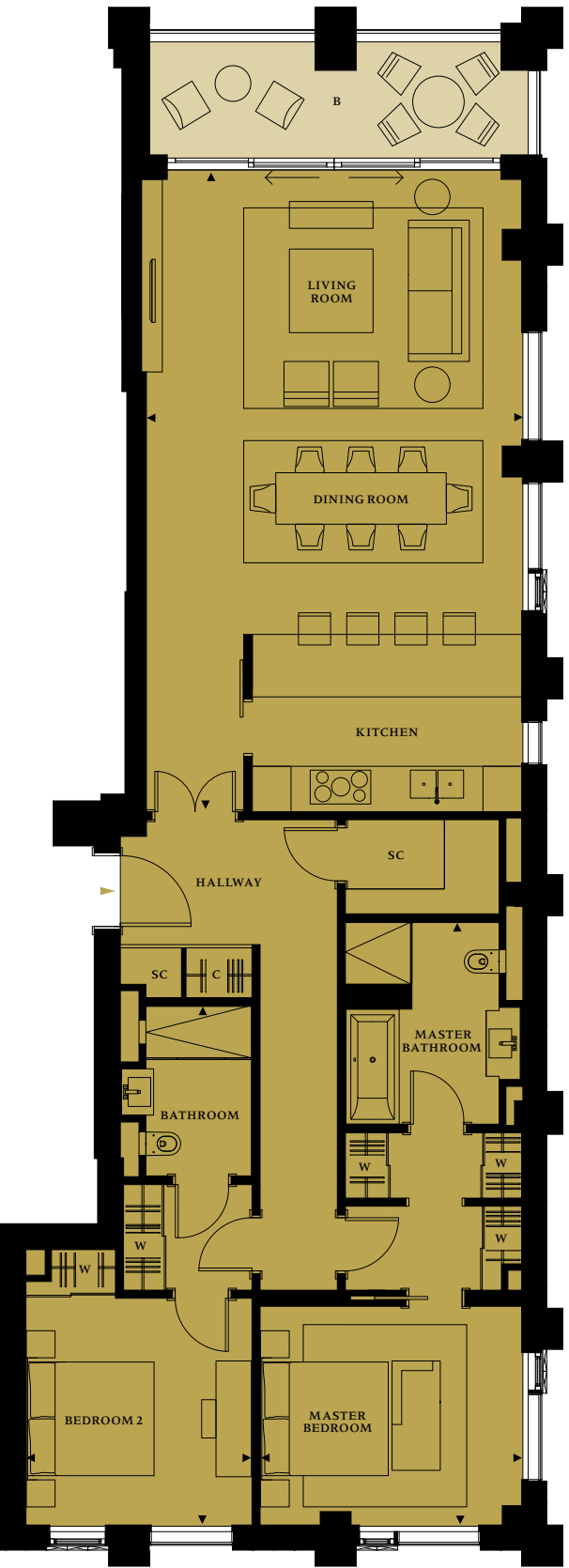




# TWO BEDROOM APARTMENT

## Apartment Type W

Living/Kitchen		5.9m x 10.0m		19'05" x 32'10"	
Master Bedroom Suite		4.2m x 9.4m		13'10" x 30'01"	
Bedroom 2		3.5m x 8.1m		11'06" x 26'07"	
Floor	Apt. No.	Apartment Area		Balcony Area	
11	1101	132.1 sq m	1,422.0 sq ft	10.9 sq m	117.0 sq ft
12	1201	132.1 sq m	1,422.0 sq ft	10.9 sq m	117.0 sq ft
13	1301	132.1 sq m	1,422.0 sq ft	10.9 sq m	117.0 sq ft
14	1401	132.1 sq m	1,422.0 sq ft	10.9 sq m	117.0 sq ft
15	1501	132.1 sq m	1,422.0 sq ft	10.9 sq m	117.0 sq ft
16	1601	132.1 sq m	1,422.0 sq ft	10.9 sq m	117.0 sq ft
17	1701	132.1 sq m	1,422.0 sq ft	10.9 sq m	117.0 sq ft
18	1801	132.1 sq m	1,422.0 sq ft	10.9 sq m	117.0 sq ft



Apartment Type W



Floorplans shown for Belvedere Gardens are approximate measurements only. Floorplans are not to scale. Exact layout and sizes may vary.

- Key
- C Cupboard
  - W Wardrobe
  - SC Service Cupboard
  - T Terrace
  - B Balcony
  - JB Juliette Balcony



# TWO BEDROOM APARTMENTS

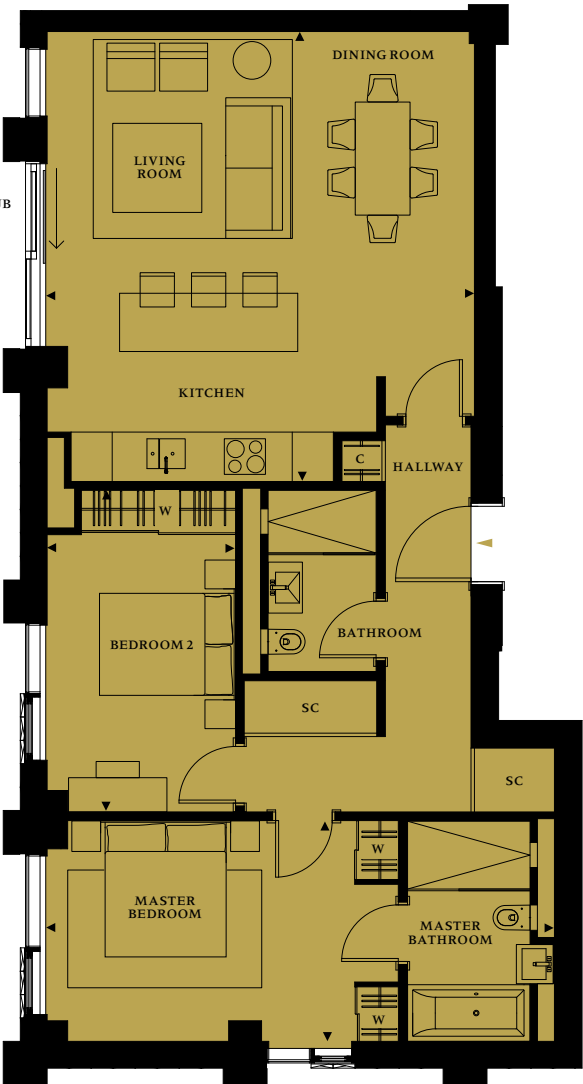
## Apartment Type X

Living/Kitchen		6.4m x 6.5m		20'11" x 21'03"
Master Bedroom Suite		3.2m x 7.5m		10'05" x 24'08"
Bedroom 2		2.8m x 4.7m		9'02" x 15'05"
Floor	Apt. No.	Apartment Area		Juliette Balcony
11	1102	96.1 sq m	1,034.0 sq ft	✓
12	1202	96.1 sq m	1,034.0 sq ft	✓
13	1302	96.1 sq m	1,034.0 sq ft	✓
14	1402	96.1 sq m	1,034.0 sq ft	✓
15	1502	96.1 sq m	1,034.0 sq ft	✓
16	1602	96.1 sq m	1,034.0 sq ft	✓
17	1702	96.1 sq m	1,034.0 sq ft	✓
18	1802	96.1 sq m	1,034.0 sq ft	✓



## Apartment Type Y

Living/Kitchen		8.7m x 7.9m		28'06" x 25'11"	
Master Bedroom Suite		3.1m x 12.0m		10'02" x 39'05"	
Bedroom 2		3.5m x 6.5m		11'06" x 21'04"	
Floor	Apt. No.	Apartment Area		Balcony Area	
11	1103	146.2 sq m	1,574.0 sq ft	11.1 sq m	119.0 sq ft
12	1203	146.2 sq m	1,574.0 sq ft	11.1 sq m	119.0 sq ft
13	1303	146.2 sq m	1,574.0 sq ft	11.1 sq m	119.0 sq ft
14	1403	146.5 sq m	1,577.0 sq ft	11.1 sq m	119.0 sq ft
15	1503	146.5 sq m	1,577.0 sq ft	11.1 sq m	119.0 sq ft
16	1603	146.5 sq m	1,577.0 sq ft	11.1 sq m	119.0 sq ft
17	1703	146.5 sq m	1,577.0 sq ft	11.1 sq m	119.0 sq ft
18	1803	146.5 sq m	1,577v sq ft	11.1 sq m	119.0 sq ft



Apartment Type X



Apartment Type Y\*

- Key**
- C Cupboard
  - W Wardrobe
  - SC Service Cupboard
  - T Terrace
  - B Balcony
  - JB Juliette Balcony



Floorplans shown for Belvedere Gardens are approximate measurements only. Floorplans are not to scale. Exact layout and sizes may vary.

\*Glazing arrangement to Living Room different at levels 11, 12 and 13. See pages 42/43 for relevant floorplan.



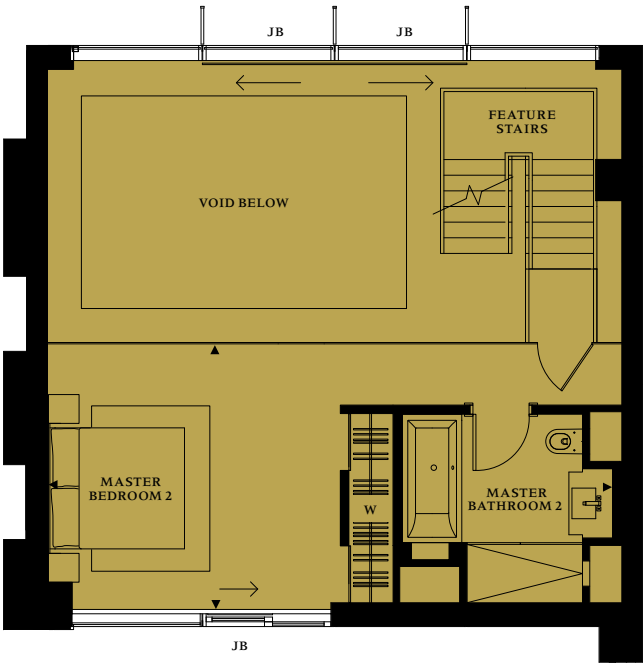
# THREE BEDROOM DUPLEX APARTMENT

## Apartment Type M

Living/Kitchen		10.3m x 8.0m		33'09" x 26'03"
Master Bedroom Suite 1		8.4m x 3.9m		27'06" x 12'10"
Master Bedroom Suite 2		4.2m x 7.2m		13'10" x 23'08"
Bedroom 3		3.1m x 5.7m		10'02" x 18'09"
Floor	Apt. No.	Apartment Area		Juliette Balcony
7	703	159.4 sq m	1,716.0 sq ft	✓



Floorplans shown for Belvedere Gardens are approximate measurements only.  
Floorplans are not to scale. Exact layout and sizes may vary.



Apartment Type M – Upper



Apartment Type M – Lower

- Key**
- C Cupboard
  - W Wardrobe
  - SC Service Cupboard
  - T Terrace
  - B Balcony
  - JB Juliette Balcony





# THREE BEDROOM APARTMENT

## Apartment Type S

Living/Kitchen		6.2m x 15.0m	20'05" x 49'03"
Master Bedroom Suite		4.4m x 9.0m	14'06" x 29'07"
Bedroom 2		4.2m x 6.9m	13'10" x 22'08"
Bedroom 3		3.4m x 6.9m	11'11" x 22'08"
Floor	Apt. No.	Apartment Area	Terrace/Balcony Areas
			7.56 sq m    94.0 sq ft
9	905	184.8 sq m    1,989.0 sq ft	74.1 sq m    798.0 sq ft



Apartment Type S

- Key**
- C Cupboard
  - W Wardrobe
  - SC Service Cupboard
  - T Terrace
  - B Balcony
  - JB Juliette Balcony



Floorplans shown for Belvedere Gardens are approximate measurements only. Floorplans are not to scale. Exact layout and sizes may vary.



# THREE BEDROOM APARTMENTS

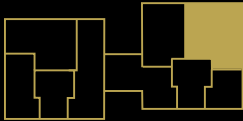
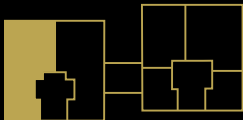
## Apartment Type T

Living/Kitchen		6.1m x 12.0m		20'00" x 39'05"	
Master Bedroom Suite		4.7m x 9.2m		15'05" x 30'03"	
Bedroom 2		3.3m x 6.9m		10'10" x 22'08"	
Bedroom 3		4.0m x 5.3m		13'02" x 17'05"	
Floor	Apt. No.	Apartment Area		Balcony Area	
9	906	175.3 sq m	1,887.0 sq ft	17.2 sq m	185.0 sq ft

## Apartment Type H

Living/Kitchen		5.9m x 9.0m		19'05" x 29'07"	
Master Bedroom Suite		3.4m x 10.0m		11'02" x 32'10"	
Bedroom 2		4.4m x 5.2m		14'06" x 17'00"	
Bedroom 3/Study		2.6m x 6.4m		8'07" x 20'11"	
Floor	Apt. No.	Apartment Area		Balcony Area	
2	201	146.9 sq m	1,581.0 sq ft	11.7 sq m	126.0 sq ft
3	301	146.9 sq m	1,581.0 sq ft	11.7 sq m	126.0 sq ft
4	401	146.9 sq m	1,581.0 sq ft	11.7 sq m	126.0 sq ft
5	501	146.9 sq m	1,581.0 sq ft	11.7 sq m	126.0 sq ft
6	601	146.9 sq m	1,581.0 sq ft	11.7 sq m	126.0 sq ft
7	701	146.9 sq m	1,581.0 sq ft	11.7 sq m	126.0 sq ft
8	801	146.9 sq m	1,581.0 sq ft	11.7 sq m	126.0 sq ft
9	901	146.9 sq m	1,581.0 sq ft	11.7 sq m	126.0 sq ft
10	1001	146.9 sq m	1,581.0 sq ft	11.7 sq m	126.0 sq ft

Floorplans shown for Belvedere Gardens are approximate measurements only. Floorplans are not to scale. Exact layout and sizes may vary.



Apartment Type T



Apartment Type H

- Key**
- C Cupboard
  - W Wardrobe
  - SC Service Cupboard
  - T Terrace
  - B Balcony
  - JB Juliette Balcony





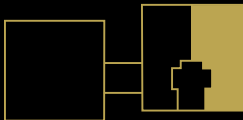
# THREE BEDROOM APARTMENTS

## Apartment Type Z1

Living/Kitchen		6.3m x 12.1m		20'08" x 39'08"	
Master Bedroom Suite		4.4m x 10.1m		14'05" x 33'01"	
Bedroom 2		3.3m x 7.7m		10'10" x 25'03"	
Bedroom 3		4.3m x 5.3m		14'02" x 17'04"	
Floor	Apt. No.	Apartment Area		Balcony Area	
19	1901	186.2 sq m	2,004.0 sq ft	18.0 sq m	194.0 sq ft

## Apartment Type Z2

Living/Kitchen		6.3m x 12.1m		20'08" x 39'08"	
Master Bedroom Suite		4.4m x 10.1m		14'05" x 33'01"	
Bedroom 2		3.3m x 7.7m		10'09" x 25'03"	
Bedroom 3		4.0m x 5.3m		13'02" x 17'05"	
Floor	Apt. No.	Apartment Area		Balcony Area	
19	1902	184.8 sq m	1,989.0 sq ft	18.4 sq m	198.0 sq ft



Apartment Type Z2



Apartment Type Z1

- Key**
- C Cupboard
  - W Wardrobe
  - SC Service Cupboard
  - T Terrace
  - B Balcony
  - JB Juliette Balcony



Floorplans shown for Belvedere Gardens are approximate measurements only. Floorplans are not to scale. Exact layout and sizes may vary.



# 3 BEDROOM PENTHOUSE LEVEL 10

## Apartment Type P2

Living		9.5m x 8.5m		31'02" x 27'10"	
Living/Kitchen		10.3m x 6.1m		33'09" x 20'02"	
Master Bedroom Suite 1		5.6m x 12.0m		18'05" x 39'05"	
Master Bedroom Suite 2		7.8m x 8.0m		25'08" x 26'03"	
Bedroom 3/Guest Bedroom		7.5m x 3.1m		24'08" x 10'06"	
Floor	Apt. No.	Apartment Area		Terrace Areas	
10	1005	358.8 sq m	3,862.0 sq ft	39.7 sq m	427.0 sq ft



Apartment Type P2

- Key**
- C Cupboard
  - W Wardrobe
  - SC Service Cupboard
  - T Terrace
  - B Balcony
  - JB Juliette Balcony



Floorplans shown for Belvedere Gardens are approximate measurements only. Floorplans are not to scale. Exact layout and sizes may vary.



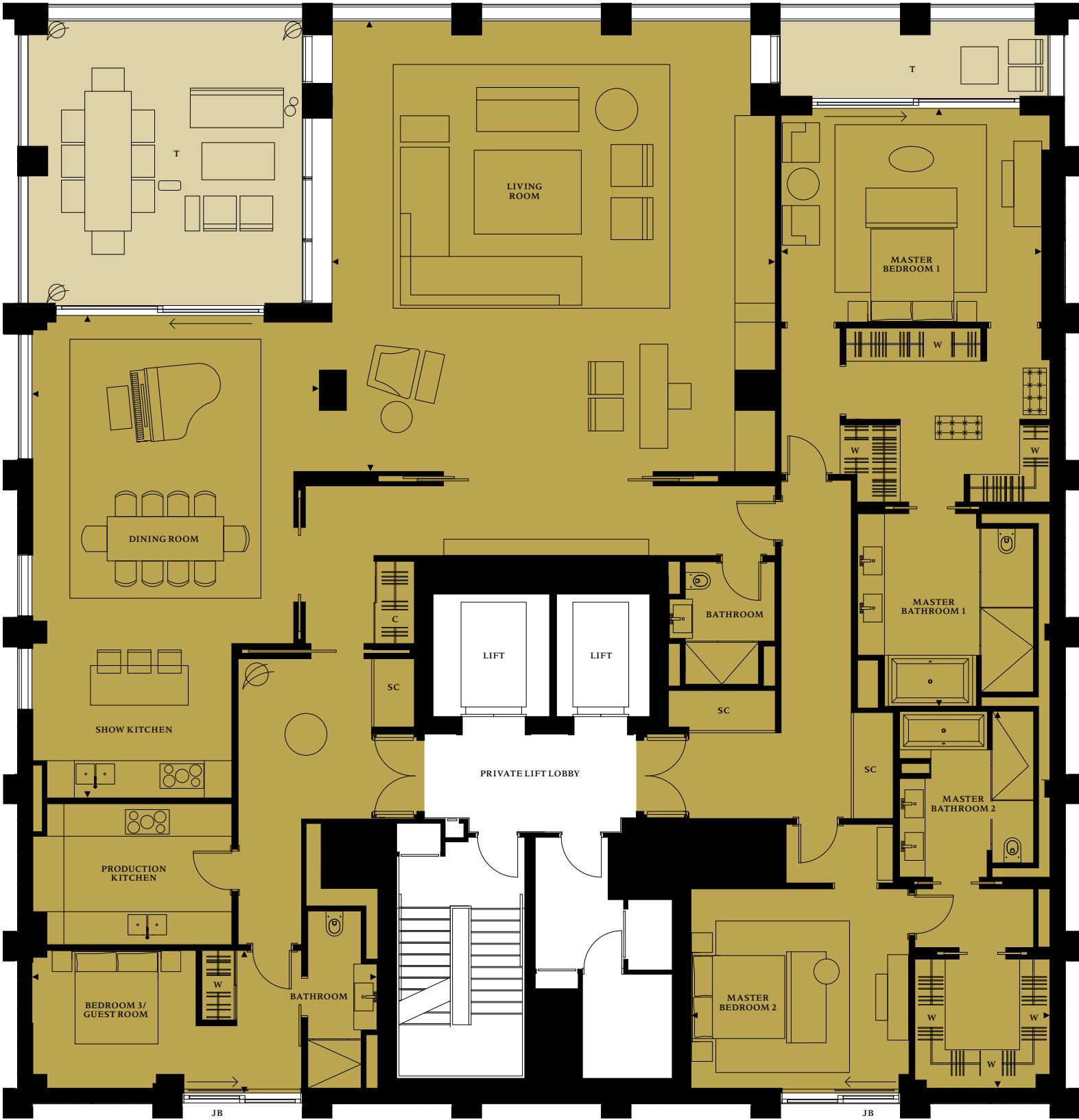
# 3 BEDROOM PENTHOUSE LEVEL 20

## Apartment Type P1

Living Room		9.5m x 9.7m		31'02" x 31'09"	
Dining/Kitchen		10.4m x 6.2m		34'01" x 20'04"	
Master Bedroom Suite 1		5.6m x 13.0m		18'05" x 42'08"	
Master Bedroom Suite 2		7.8m x 8.0m		25'08" x 26'03"	
Bedroom 3		7.4m x 3.1m		24'04" x 10'03"	
Floor	Apt. No.	Apartment Area		Terrace Areas	
20	2001	374.4 sq m	4,030.0 sq ft	46.3 sq m	493.0 sq ft



Floorplans shown for Belvedere Gardens are approximate measurements only.  
Floorplans are not to scale. Exact layout and sizes may vary.



Apartment Type P1

- Key**
- C Cupboard
  - W Wardrobe
  - SC Service Cupboard
  - T Terrace
  - B Balcony
  - JB Juliette Balcony





# SPECIFICATION

Main Structures
Reinforced concrete frame on piled foundations including appropriate vibration isolation.
Building Envelope
Combination of pre-cast stone cladding panels to columns and major floor spandrels and unitised curtain walling infill of glazing and profiled metal panels. All unitised elements finished in bronze anodised aluminium.
Floors
Reinforced concrete slabs integral with the main structural frame.
Roof
High Performance membrane roofing with pre-cast paving finish to main areas to provide access for maintenance.
Windows and Doors
Triple glazed windows in bronze anodised aluminium frames with opening lights, sliding and hinged doors as appropriate to provide ventilation and give access to terraces and balconies.
Stairs (Means of Escape)
Pre-cast or in-situ cast concrete stairs with painted steel balustrades.
Terraces and Balconies
Terraces and Balconies constructed to provide level access from the interior of the apartment. Balustrades to be glazed with minimal vertical supports and bronze anodised handrail.
Floor finish to be natural stone with integral drainage arrangements.
Power and water provided to all terraces.
Where Juliette style balconies are provided to some of the apartments these are formed as part of the window system with integral balustrade.
Internal Walls

Party walls constructed from metal studwork finished with layers of acoustic plasterboard to both sides and acoustic insulation between. Enhanced acoustic performance provided to party walls in terms of general and low frequency attenuation. Additional security measures to be included in party wall construction.

Internal walls constructed of metal studwork with plasterboard facing and acoustic insulation where appropriate. All plasterboard walls to be skim plaster finish.

Ceilings
Ceilings to be suspended plasterboard construction including as appropriate specially formed bulkhead features to provide lighting troughs, curtain and blind support details and access arrangements to services included above the ceiling. All ceilings to be skim plaster finish.

Alternative Materials and Finishes Selection
Where alternative material choices are identified in the specification, these will be confirmed with purchasers on the basis of representative material samples at the time of purchase.
Flooring

Engineered specially detailed natural timber flooring provided in all apartments. Finish to be oak boards in one bedroom apartments throughout and either walnut boards or oak herringbone flooring in two and three bedroom apartments to main living spaces and master bedrooms.

Bespoke designed and manufactured wool mixture carpet to second and third bedrooms.

Doors
Apartment front door to be a generous width and thickness with integrated lights and feature plate to include apartment numbers and door bells. Front doors finished in timber veneer to all faces in keeping with communal area design.
Internal doors to be full height with applied architrave detailing and bespoke bronze ironmongery. Finish to be timber veneer to all surfaces.
Internal Joinery
Interior joinery detailing generally based on an approach of applied moulded painted skirtings, architraves and feature elements.
Kitchens

**One Bedroom Apartments**

Bespoke designed integrated kitchen with low and high level cabinets finished in lacquered timber veneer and semi-gloss spray lacquer. Alternative veneers and lacquer colours available to purchaser’s preference. All cupboard and drawer units to be handle free with appropriate touch opening and soft closing mechanisms included.

Worktops to be polished and sealed stone with preformed cut outs for induction hob, under mounted sink and mixer tap. Alternative stone selection available to purchaser’s preference. Splash back formed in back painted glass.

- Integrated appliances to include:
- Dornbracht mixer-tap.
  - Miele touch control oven.
  - Miele touch control microwave combination oven.
  - Miele 4 ring frameless induction hob.
  - Miele touch control coffee maker.
  - Miele warmer drawer.

- Miele full size dishwasher.
- Miele integrated wine cooler.
- Miele full height integrated fridge/freezer.
- Miele extractor fan to external exhaust (not re-circulating).

**Two and Three Bedroom Apartments**

Bespoke designed kitchen including pocket doors to conceal integrated vertical appliances when not in use.

All high and low level units finished in a combination of lacquered timber veneer and semi-gloss spray lacquer. Alternative veneers and lacquer colours available to purchaser’s preference. All cupboards and drawer units to be handle free with appropriate touch opening and soft closing mechanisms included.

Worktops to be polished and sealed stone with preformed cut outs for induction hob, under mounted sink and mixer tap. Alternative stone selection available to purchaser’s preference. Splash back formed in back painted glass.

- Integrated appliances to include:
- Dornbracht mixer-tap in bronze finish.
  - Boiling water tap.
  - Blanco Zero square edged under mounted stainless steel sink.
  - Miele touch control oven.
  - Miele touch control microwave combination oven.
  - Miele touch control steam oven.
  - Miele wide frameless four ring induction hob.
  - Miele touch control coffee maker.
  - Miele warmer drawer.
  - Miele full size dishwasher.
  - Miele wine cooler.
  - Miele full height fridge/freezer.
  - Miele extractor fan to external exhaust (not re-circulating).

Bathrooms
<b>One Bedroom Apartments</b>
Three piece bathroom comprising WC, vanity unit and bath with shower over and anti-splash glass hinged screen.
White ceramic Duravit wall hung WC pan with soft close white seat and concealed frame and cistern.
Vanity unit fabricated from polished stone set into a contrasting stone support shelf.
Central fill enamel steel bath with polished stone bath surround and shower over with anti-splash hinged glass screen.
Brassware for bath and shower controls, shower heads, hand held showers and sink mixer tap all by Dornbracht, or similar in bronze finish.
Floor, bath panel and vanity unit finished in polished stone in large format tiles. Floor provided with anti-slip finish.
Walls generally finished in polished stone in large format tiles including feature wall surround to mirror cabinet and textured stone back panel to recessed glass shelves.

Bathroom cabinets with mirrored anti-mist doors and internal shelves complete with LED lighting and shaver outlets.

Heated towel rail and bathrobe warming provided.

**Two and Three Bedroom Apartments**

Master bathroom suite includes four/five piece bathrooms. Three piece bathrooms or shower rooms provided to the second and third bedrooms in larger apartments.

Master bathroom suite comprises WC, one or two vanity basins, centre fill bath and full walk in shower with glass anti-splash screen or full height door.

White ceramic Duravit wall hung WC pan with soft close white seat and concealed frame and cistern. WC separated by stone clad wall from adjoining vanity area.

Vanity unit formed of fabricated stone wash hand basin and surround with stone faced front and lacquered timber drawer units below.

Centre fill enamel steel bath with polished stone bath surround.

Brassware for shower controls, shower heads, hand held showers and vanity mixer tap all by Dornbracht, or similar, in bronze finish.

Flush floor walk in shower with rain head outlet and anti-splash full height glass screen or hinged glass door as appropriate.

Floor, bath panel and walls finished in polished stone with feature contrasting square panel to floor and frame to vanity unit and mirror above. Floor provided with anti-slip finish.

Wall recesses with stone shelves and back painted glass rear panels formed in casing behind WC and bath.

Heated anti-mist mirror provided above vanity unit with illuminated edge lighting. Bathroom storage provided within vanity unit.

Heated towel rail and bathrobe warming provided.

**Second and Third Bathrooms**

Three piece bathroom comprising WC, vanity basin and either double ended bath with shower over or walk in flush shower.

White ceramic Duravit wall hung WC pan with soft close white seat with concealed frame and cistern.

Vanity basin fabricated from natural stone set into a stone support shelf.

Centre fill enamel steel bath with polished stone bath surround and shower over with anti-splash hinged glass screen or flush walk-in shower with full height glass screen.

Brassware for shower controls, shower heads, hand held showers and vanity mixer tap all by Dornbracht, or similar, in bronze finish.

Floor, bath panel and vanity unit finished in polished stone. Floor provided with anti-slip finish.

Walls generally finished in polished stone in large format tiles. Feature wall surround to mirror cabinet and back panel to recessed glass shelves finished in textured stone finish.

Bathroom cabinets with mirrored anti-mist doors and internal shelves complete with LED lighting and shaver outlets.

Heated towel rail and bathrobe warming provided.





# SPECIFICATION

## Wardrobes

Bespoke wardrobes with full height sliding doors complete with semi gloss lacquer finish will be standard in all apartments to appropriate size. All wardrobes will include internal lighting, hanging rail and shelves. Two and three bedroom apartments include fitted drawer units.

Some of the larger three bedroom apartments include walk-in closets/ dressing rooms for clothes storage. These would be fitted out with hanging rails, shelves, drawer units and mirrors in the same manner.

The modular design allows for future installation of additional shelves, drawers and other features by the purchaser.

## Utility Cupboards

Utility cupboards are provided to all units to house the principal in-coming supplies and building services equipment. This equipment includes the following:

- Whole house ventilation unit.
- Cooling and heating interface units.
- Electrical distribution panel.
- Lighting control system.
- Space allowance for AV/Home Automation System installations by the purchaser and interfaces with any pre-installed wiring.
- Washer dryer by Siemens.

Full height access doors in timber veneer or factory applied lacquer as appropriate.

Internal removable panelling and shelving provided to screen main equipment where space permits.

## Heating and Cooling

Metered hot and chilled water mains fed from centralised plant infrastructure are provided into each apartment. These serve a zoned under floor heating system to all areas of the apartment and provide comfort cooling to all the principal rooms via ceiling mounted fan coils. Individual environmental control provided to all principal rooms.

## Fire Safety

All apartments include residential standard sprinkler protection with concealed heads integrated into the ceiling and mains wired apartment wide fire detection system comprising heat and smoke detectors as appropriate to all principal rooms.

## Electrical Installations

All lighting installations will be low energy LED fittings either as concealed strips forming trough lighting and ceiling edge feature lighting or recessed down-lighters.

Lighting control systems included to provide fixed option scene setting with touch screen control to all principal rooms.

All apartments include the following IT/AV infrastructure:

- 2 no. optic fibre connections from main building wiring for satellite and digital terrestrial TV channels. Purchaser responsible for all service connections and charges.
- High speed fibre optic feed for telephone and dedicated broadband services. Purchaser responsible for all service connections and charges.
- Video and TV wiring provided to pre-determined outlet points in all the principal rooms.
- Ceiling speaker wiring provided to pre-determined locations in all principal rooms. Speaker installation by purchaser.
- Power and control cabling for automated blinds and curtains including interface connection to lighting control positions. Blinds and curtains to be installed by purchaser including wiring connections.
- All AV and control cabling terminated in the utility/service cupboard to facilitate the installation of integrated AV installations and home automation systems by the purchaser. AV and home automation system upgrade packages will be available to purchasers. The details of options will be confirmed to purchasers during construction to ensure they reflect up-to-date technology available.
- All switch plates to be either polished chrome or bronze finish.

## Blind and Curtain Installations

A recessed ceiling feature or bulkhead is provided at all window interfaces to take a blind or sheer curtain and a second curtain. Power and control cabling will be provided to allow the installation of powered blinds or sheer curtains by purchaser.

## Management and Security

The whole Southbank Place development will benefit from site-wide estate management and security monitoring including:

- Centralised concierge/security office.
- Site wide CCTV security with centralised monitoring.
- Site wide security staff on a 24 hour basis.

Belvedere Gardens will have its own dedicated security provision as follows:

- The Lobby of Belvedere Gardens will have a manned concierge station.
- Apartment video entry phone including two way connections with the concierge of Belvedere Gardens.
- Security wiring within each apartment to pre-determined locations to allow installation by the purchaser of a security system. Purchaser responsible for installation of security system and all costs for external connection to third party security provider.
- All apartments entrance doors in accordance with Secured by Design Standards.

## Lifts

The building contains 4 no. high speed lifts, in two groups of 2 no. lifts, collectively serving all floors of the building. One of the lifts in each group is configured as a service lift in terms of duty and lift car size. This will be allocated for all furniture moves and apartment fit-out works in the future and provided with removable protection drapes for this purpose. The finish to all lifts will be the same and commensurate with the building main lobby finishes.

## Residents’ Amenity Facilities

A residents’ lounge is provided at first floor level directly accessible from the main entrance lobby. This is a flexible space providing business facilities, meeting facilities, relaxation space and multi-function/ screening room area. At times parts of this facility will be available to residents on a bookable basis for private events.

## Health and Fitness Facilities in Belvedere Gardens

Belvedere Gardens includes a dedicated health and fitness facility at basement level with direct access from the circulation cores in the building. This facility comprises a dedicated gym with aerobic, resistance and specialist equipment together with wet health facilities including steam room, sauna, experience showers and a spa treatment room available on a bookable basis and subject to separate charges.

## Health and Fitness Central Facilities

Within the Southbank Place development an exclusive Health and Fitness facility and Spa is proposed for use by all the private residential apartments. This will include the following:

- Swimming pool and associated wet health experience facilities.
- Multi-functional gym including aerobic equipment, resistance equipment, free weights and personal training facilities.
- Studio space for Yoga, Spinning and other similar group activities.
- Changing and relaxation areas.

The facility will also include a dedicated commercial spa facility which will be available to residential occupiers subject to separate charges.

## Car Parking

Secure basement car parking available subject to separate negotiation.

## Basement Storage Units

Secure basement storage units available subject to separate negotiation.

## Warranty

All apartments come with the benefit of a 10 year NHBC Warranty from the date of completion.

Note: Where a particular material or product is specified this may be subject to change due to either availability of a particular product or quality of material available at the time of procurement.





# SOUTHBANK PLACE MASTER PLAN



One Southbank Place / Squire and Partners



Two Southbank Place / Kohn Pedersen Fox Associates



One & Two York Square / Squire and Partners



Three York Square / Patel Taylor Architects



The Belvedere / Stanton Williams



Belvedere Gardens / GRID Architects



York Square /  
Townshend Landscape Architects / Squire and Partners



York Square /  
Townshend Landscape Architects / Squire and Partners

Computer generated images are indicative only

These prestigious landmark buildings, designed by five notable architects, encircle the existing landmark Shell Tower. The five stunning residential buildings provide a collection of exceptional apartments and penthouses, complemented by the highest quality restaurants, stylish bars, state-of-the-art leisure amenities and fabulous public spaces to relax in.



**Key:**  
— Indicates building entrance  
— Underground car park entrance  
— Entrance to the Residents' Health Club and Spa

WATERLOO



WWW.SOUTHBANK-PLACE.COM

A development by Braeburn Estates Limited Partnership



Contact

UK sales team



International sales team



MISREPRESENTATION ACT 1967 & DECLARATION Braeburn Estates its subsidiaries and agents give notice that: i) these particulars are a general outline only, for the guidance of prospective purchasers, and do not constitute the whole or any part of an offer or contract; ii) the accuracy of any description, dimensions, references to condition, necessary permissions for use and occupation and other details contained herein is not guaranteed and are not to be relied upon as statements of fact or representations, purchasers must satisfy themselves as to their accuracy; iii) rents quoted in these particulars maybe subject to VAT in addition; (iv) no liability is accepted in negligence or otherwise, for any loss arising from the use of these particulars and; v) the reference to any plant, machinery equipment, services, fixtures or fittings at the property shall not constitute a representation (unless otherwise stated) as to its state or condition or that it is capable of fulfilling its intended function. Prospective purchasers should satisfy themselves as to the fitness of such items for their requirements. Fixtures and fittings may be replaced with items of a comparable quality. vi) Pictorial images, drawings and computer generated images are indicative and for illustrative purposes only. Walking distances are approximates only, source: www.walkit.com. vii) no employee of Braeburn Estates or any of its associated companies or partnerships (and their Joint Agents where applicable) has any authority to make or give any representation or warranty or enter into any contract whatever in relation to the property; May 2014 Subject to Contract.







