



# The Portia Fox Penthouse



The Portia Fox

Penthouse

One Casson Square, Southbank Place

“One Casson Square is a striking landmark tower with views across the city. Our vision was to create a location where residents feel they have truly arrived.”

- Michael Squire  
Architect

A cocoon for optimised contemporary lifestyles on London's South Bank, One Casson Square is a luxury apartment building overlooking the River Thames.

Featuring bold architecture dressed in stone, glass and bronze, the building is a new landmark that gives the impression of having always belonged in this urban landscape. At once at the heart of everything but providing respite from the urban buzz, the property's elegant, calm and contemporary design was masterminded by Michael Squire of Squire & Partners architects.

Full-height windows and cleverly oriented spaces give residents some of the best views in the city, adding an extra dimension to daily experiences as they change with the seasons. Interiors are by Clerkenwell interior architecture firm, Johnson Naylor, and the property meticulously considers the best of daily experiences, complete with a private health and fitness club, a resident's lounge, a private dining area and a hotel-style lobby.

The pinnacle of the building is the Penthouse, designed by boutique interior designer, Portia Fox, to epitomise the way of life embodied by One Casson Square.

The Portia Fox

Penthouse

“One very lucky person is going to live here.

They’re going to discover the magic of London from the best vantage.

What a view!  
What a city.”

- Portia Fox

“The penthouse has a unique feel that is part New York high rise sophistication and part a hub of culture and creativity that so defines this stretch of the South Bank.”

- Portia Fox

On the 35th floor, the Portia Fox Penthouse is the building's showpiece, complete with three bedrooms and 360-degree views of London.

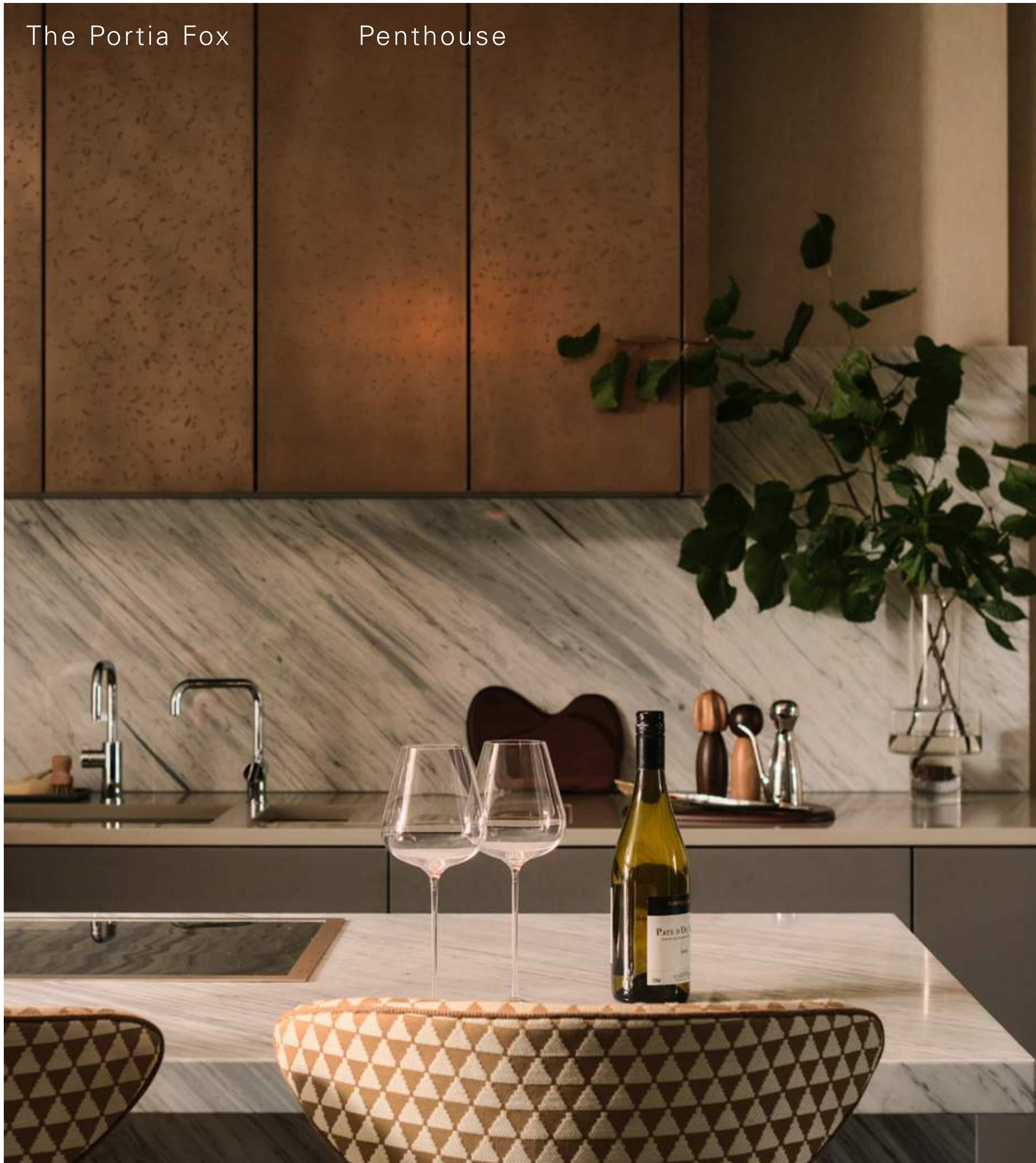
A playful geometric interior incorporates bespoke artworks, rugs and custom designed furniture, as well as a tranquil colour palette that reflects the river and the landscape outside but brings sanctuary-style calm to urban living.

Wake to the distant call of Big Ben, views of icons including the London Eye, the Houses of Parliament and Royal Festival Hall, and watch the world go by. In this space you have the best of all worlds - at once in the centre of one of the most exciting cities in the world and floating above it.



Every room in the Penthouse has been designed to elevate daily experiences. Soft curves nurture an easy flow through the space, creating an inherent sense of calm.

The views, the way you move from one area to the next, and how the space works have all been carefully considered, providing an inherent sense of harmony, from the hardwood floors to the seamless pocket doors, the curved statement staircase to the configuration of the furniture towards the views. This is a space where everything has purpose and nothing is superfluous.



A convivial space in the heart of the home, the kitchen is a warm and inviting area for conversations over cooking or morning coffee with a view. Cool quartz worktops are flanked by custom designed modular cabinets with integrated Miele appliances, while designer details include upholstered bar stools exclusively designed in-house and crafted by a specialist maker in South West London. At all times, those ever-present views take centre stage thanks to floor-to-ceiling windows.



The Portia Fox

Penthouse



The Portia Fox

Penthouse



For entertaining in style, the dedicated dining area is dramatically oriented towards London's West End. The space is relaxing to be in whilst peppered with talking points, from the show stopping brass dining table and bespoke pendant lighting to a backdrop centred on a specially commissioned artwork by Carla Tak.







The living space works both as a formal entertainment area as well as a quiet environment to enjoy in peace.

Carefully curated with low-back chairs by the windows so as not to obstruct the views, a large curved sofa brings softness and usability.

Muted tones allow carefully selected features to shine, from the custom designed rugs made in Nepal to a painting by Canadian artist Carla Tak nestled into the joinery. There's a large scale sculptural wall art by American artist Louis Ignacio, and a spectacular brass and veneer coffee table with a pivoting top, which is part of a limited edition collection.





Nowhere else in London enjoys such an iconic view, taking in landmarks that have stood for centuries, and which promise to remain unchanged.



A home that's ideal for cosmopolitan professionals, there's space to work with inspiration from the world outside. The angled bespoke desk was designed to appreciate the view during everyday moments, with a reflective finish that mirrors the river.



Calm and sophisticated, the bedrooms are spacious and filled with natural light.

The master bedroom is especially elegant, complete with a beautiful dressing room. Hand carved panels on the headboard are oriented so you wake facing the London Eye, while exquisite details like a handwoven silk abstract composition from the Netherlands ensure this is a room like no other.



Featuring polished stone across the walls and floors, underfloor heating and bespoke vanity units, the bathrooms have a spa-like feel to them. Once again, by taking in the views of the city below, the space is complete with an almost meditative backdrop.



# Behind the scenes

Interview with  
Portia Fox

Boutique interior designer, Portia Fox, was responsible for taking the inspiring architectural forms of One Casson Square, and elevating it even further with her unique eye for style. Here, she discusses her inspiration for the striking design of the Penthouse apartment and how it sets the precedent for luxury living on London's South Bank.

**What were your main inspirations for the design of the penthouse?**

The main inspiration was the spectacular views you see from nearly every room in the Penthouse. The space planning was very much the starting point for the design. The apartment is a wonderful space with the vista across London, and we were eager to maximise the unique vantage point, making sure we provided exactly what a potential buyer would want from it.

There is a striking spiral staircase in the entrance and we wanted to celebrate that by giving it an open gallery feel. Within the living area we sought to provide generous seating and a spectacular area for entertaining and dining. We created an intimate seating area to have a coffee or cocktail, depending on the time of day, and admire the spectacular views of the London Eye and over to Westminster.

The palette and material selections are timeless and luxurious to compliment but not compete with the surroundings. Overall, inspiration was about being in keeping with the 'quiet luxury' trend reminiscent of many contemporary New York penthouses.

**Have you played on the architecture of the building?**

For me it was more about highlighting the extraordinary views. For example, the furniture was arranged with details such as the L-shape sofa looking out to the river and the master bedroom headboard facing the London Eye.

**Has your design been inspired by the immediate locality?**

We felt the buyer would be someone who appreciates the urban bustle being right outside their door but who also enjoys being above it all, retreating to a comfortable and peaceful space. That was a feeling we wanted to emphasise.

**What are the core colours and themes used across the Penthouse design?**

We purposely selected a very calm and neutral palette, playing with texture and materiality. Where more intense colours are used, they are deep inky blues, soft greens and terracotta - they work tonally with the external landscape, so essentially feel quite neutral. We have also used a lot of metal - such as the dining table, entry console and mirrors - bringing a brutalist edge to the design. This sits alongside refined textures such as carved timbers, natural stones and sophisticated fabrics including mohair velvets, suede, leather and heavy weight linens. Together it creates a classic, timeless appeal.

**You have incorporated local suppliers and artisans within the design, can you tell us more about them?**

Yes, approximately 80% of the materials and items within the Penthouse have been made in the UK. By working with local suppliers we are able to offer great quality pieces that have been made by hand and tailored specifically for this Penthouse.

Artisan touches can be found in details like the hand carved panels on the master bedroom headboard and the hand plastered spiral staircase. Timber from fallen trees in London were used by Process Studio to create the Pippy Oak bedside tables in guest bedroom one. We also incorporated beautiful pieces from notable makers including Treeslounge, Fabrili and Novocastrian.

**The collection of artwork is striking, can you tell us about the artists and where did the pieces come from?**

With a global audience in mind, we wanted the artwork selections to feel like a collection built overtime, featuring different styles from various countries (50% of the artwork is from UK galleries and the rest are international).

We have treated the entry as a gallery space with an oversized artwork made from papier-mâché by Manufacture de Papier in Paris and commissioned especially for this space. Set within the living room joinery is a painting by Canadian artist Carla Tak, while a piece of large scale sculptural wall art sits above the living room sofa made from plaster by American artist Louis Ignacio.

Peppered throughout are straw marquetry pieces by UK artist Chelsea Vivas, and there's a handwoven silk abstract composition from the Netherlands in the master bedroom.

**Which of the furniture pieces did you commission for the Penthouse?**

Most of the furnishings are bespoke, one-of-a-kind pieces which we feel cultivates a unique look reflecting the taste of a global buyer.

For example, the dressing table in the master suite was designed specifically for the corner window. It has a unique sculptural shape, asymmetrical legs and we chose an inky blue high gloss lacquer finish that is highly reflective and really highlights the spectacular views.

There's a unique, large L-shaped sofa as we wanted to create a really usable seating arrangement in the living area that also appeared elegant. Therefore, the sofa has lovely curved shapes and a contemporary Art Deco feel.

A pair of pendants in the living and dining room are made from brass and alabaster stone, giving an ethereal glow, but there's also a rawness to their design which feels cohesive with the urban environment.

There are also custom rugs throughout the apartment, which were designed in collaboration with PFD and local company Holland Cassidy, and made in Nepal.

The layouts were very much the starting point of the design.

**How have you maximised the views from the Penthouse?**

We aimed to work with the views and not create anything too distracting when you enter a room. Therefore, the palette is generally quite calm and picks up on the vista without competing with it, all the seating arrangements have been designed to ensure that the view is the priority and we used low seats so as to not block any views.

**Who do you envision living here?**

This Penthouse has all the amenities and provisions to be a fabulous home. While it features a number of show stopping elements such as the brass dining table and bespoke pendant lighting, we always design with comfort and practicality at the forefront of our minds in a residential setting. This space balances both beautifully.

# Design and specification

The Penthouse is a masterclass in what can be achieved when you bring together the collective power of leading architects and designers.

Squire & Partners are known for founder Michael Squire's defining genius in shaping the fabric of modern London, where each building stands as a feature in its own right whilst effortlessly melting into the skyline as if it was always meant to be there.

Johnson Naylor have brought their characteristic fusion of form and function to the interior architecture, creating a dialogue between spaces that sets the scene for an elevated, contemporary lifestyle. Against this backdrop, Portia Fox has delivered something truly remarkable in

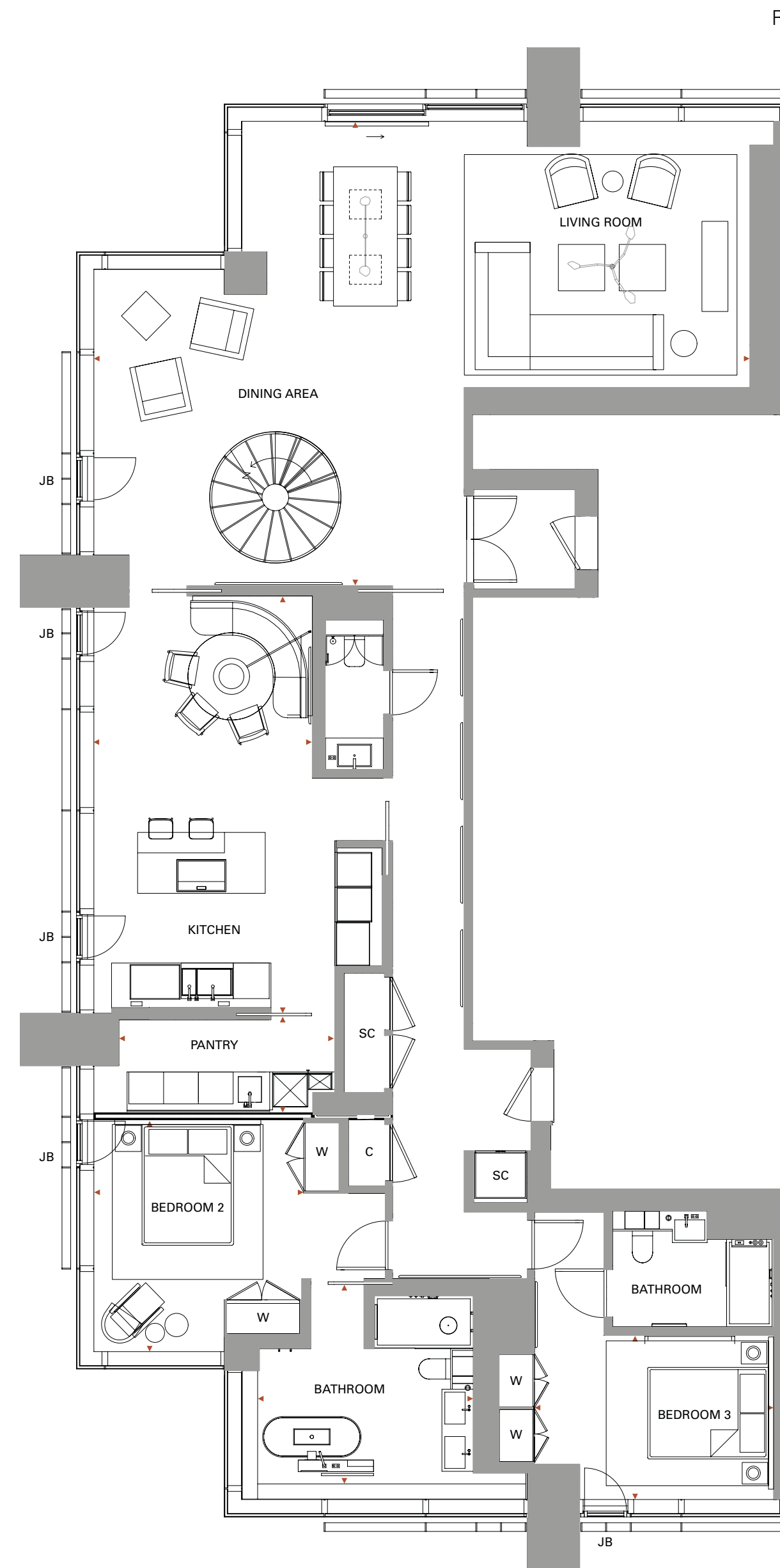
the Penthouse - a home environment with a language all of its own. Her interior design has created a harmony with the outside world, whilst allowing One Casson Square to become an entity in its own right.

Complete with one-of-a-kind craftsmanship that would be as at home in one of the world's leading art galleries as it is in this calm, tranquil and inspiring home environment, The Penthouse showcases what life can be in London.

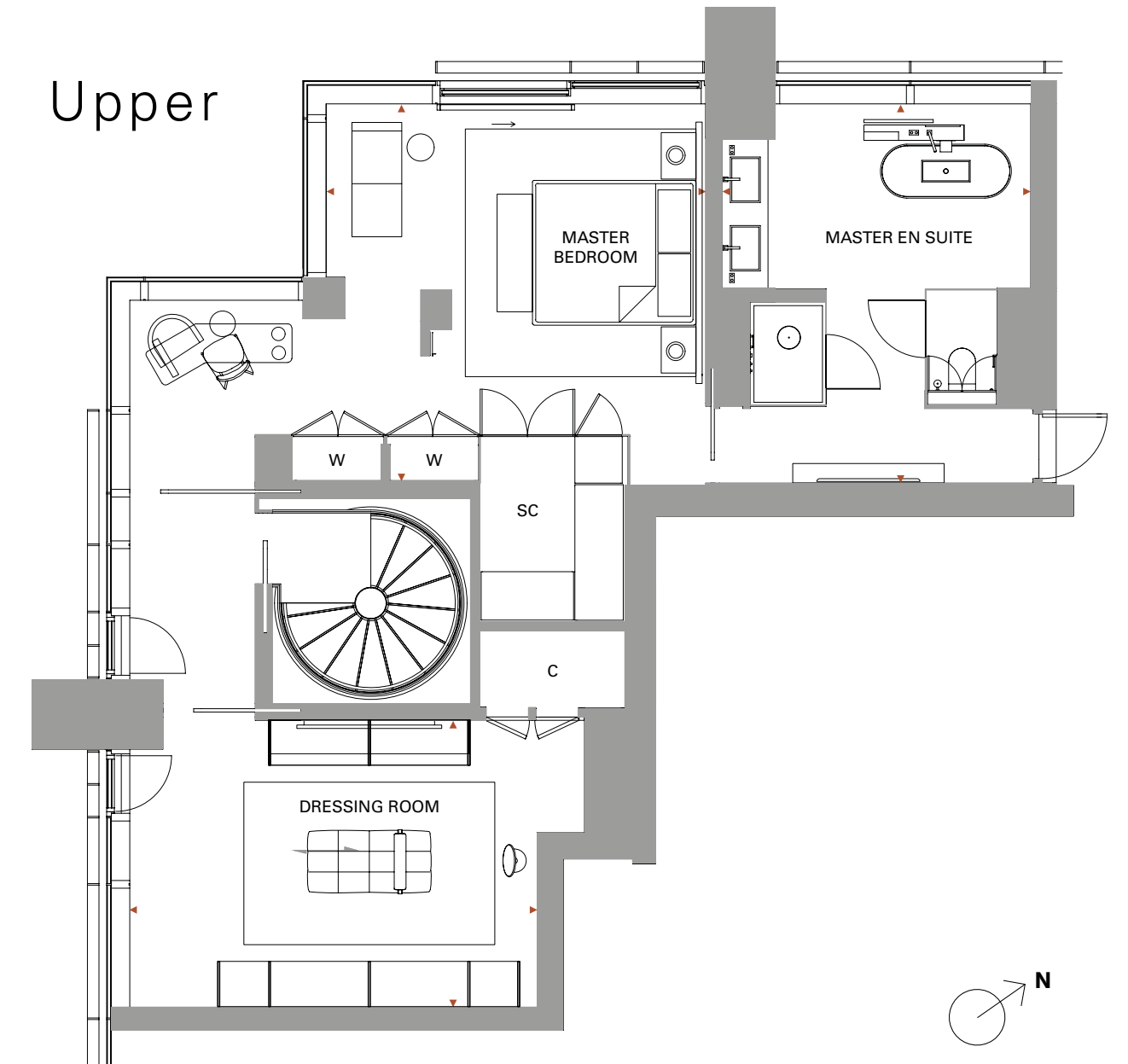


# Floorplan

Lower



Upper



**APT. NO**  
3502

**FLOORS**  
35 & 36

**TOTAL SIZE**  
288 sq m  
3100 sq ft

**KITCHEN**  
4.16m x 7.19m  
13.63 x 23.58 sq ft

**LIVING / DINING**  
11.32m x 8m  
37.14 x 26.26 sq ft

**PANTRY**  
4.16m x 1.56m  
13.63 x 5.12 sq ft

**MASTER BEDROOM**  
4.93m x 4.29m  
16.17 x 14.09 sq ft

**MASTER EN SUITE**  
4.01m x 3.92m  
13.16 x 12.88 sq ft

**BEDROOM 2**  
3.59 x 4m  
11.78 x 13.12 sq ft

**BEDROOM 2 EN SUITE**  
3.99m x 2.59m  
13.07 x 8.51 sq ft

**BEDROOM 3**  
4.13m x 2.82m  
13.55 x 9.26 sq ft

**DRESSING ROOM**  
5.91m x 3.72m  
19.41 x 12.21 sq ft

Floorplans measurements are approximate and exact layout sizes may vary in accordance with the contract. Please speak to your sales consultant for details.





# The amenities

Designed to make each daily experience a pleasurable ritual, One Casson Square's amenities include a resident's lounge, 24-hour concierge, a private dining area, meeting space and a residents-only luxury health club and spa.

The health club and spa provide a serene oasis where you can work out, wind down and recharge mind and body. Secluded from the outside world, it is the vision of designers at Goddard Littlefair, setting a new benchmark for luxury wellness with a calming colour palette, natural materials and ambient lighting. Details include a sleek lobby and facilities akin to a five-star hotel. The men's changing rooms feature a dedicated sauna while the women's changing rooms have their own sauna, steam room and vitality pool.

The main area extends to everything you would expect from a destination spa, including a 25-metre pool, a thermal suite of saunas and steam rooms and a relaxation area. The experience is complete with treatment rooms offering a menu of soothing therapies for mind and body.

For those wishing to work out, there's a TechoGym with free weights, machines and cardio stations. The intuitive spatial zoning means you can find an area for different types of exercise, while two studios feature state-of-the-art audio/visual equipment on which to stream virtual workouts or music playlists. These rooms can be individually heated or cooled to suit the intensity of your particular activity, from hot yoga to a spin class cool-down.





Luxury interior designers Goddard Littlefair have created a haven of wellbeing, complete with a suite of saunas and steam rooms in the main spa area as well as dedicated male and female thermal facilities in the changing rooms.



# The location



Set within Southbank Place, One Casson Square is simultaneously in the heart of London and able to observe it all, unlike counterpart properties on the North Bank.

London's most treasured sites and cultural attractions are within walking distance of the property. Immediately outside you will find the London Eye, Royal Festival Hall and the Southbank Centre, while the National Theatre and The Old Vic are mere moments away. Stroll across Hungerford Bridge to Embankment and you find yourself by Covent Garden and Leicester Square, and as always there's the omnipresent Houses of Parliament and Big Ben to marvel at.

The location is not only inspiring but convenient for making the most of city centric living. In prime position on the South Bank, residents have easy access to transport links, particularly National Rail and the London Underground from Waterloo (Jubilee Line).

Designed to elevate London living and combine the best of heritage surroundings with the lifestyle of the future, the building provides a constant dialogue with its location. Epitomising that harmonious interplay is the Penthouse itself.

The Portia Fox

Penthouse







# Canary Wharf Group

# Qatari Diar Real Estate Investment Company

Canary Wharf Group is an established integrated property development, investment, and management group of companies. It is focused on the design, construction, leasing and management of grade A office space, high-quality retail, leisure and residential in central London.

Over the past 30 years Canary Wharf Group plc has successfully regenerated derelict wharves into one of the world's premier business and shopping districts, constructing over 16.5m sq ft of office space, retail and restaurants; more than any other company in London. These buildings are currently occupied by over 120,000 people.



One Park Drive



Newfoundland



20 Fenchurch St

Qatari Diar Real Estate Investment Company is wholly owned by the Qatar Investment Authority, the sovereign wealth fund of the State of Qatar, and was established in February 2005. The company supports Qatar's growing economy and co-ordinates the country's real estate development priorities.

Qatari Diar is currently at the forefront of 39 signature projects in 21 countries around the world, with a combined value of more than \$35bn. Qatari Diar has established itself as one of the world's leading, most trusted and respected real estate companies because of its unyielding commitment to quality, local community, partnership and hallmark sustainability.



Chelsea Barracks, London



Lusail City, Qatar



City Center DC, Washington

# Contact

## DEVELOPER

Braeburn Estates Ltd Partnership  
(a joint venture between  
Canary Wharf Group & Qatari Diar)

+44(0) 20 7001 3600

[residential.sales@southbank-place.com](mailto:residential.sales@southbank-place.com)



A development by  
Braeburn Estates Limited Partnership



MISREPRESENTATION ACT 1967 & DECLARATION Braeburn Estates its subsidiaries and agents give notice that; i) these particulars are a general outline only, for the guidance of prospective purchasers, and do not constitute the whole or any part of an offer or contract; ii) the accuracy of any description, dimensions, references to condition, necessary permissions for use and occupation and other details contained herein is not guaranteed and are not to be relied upon as statements of fact or representations, purchasers must satisfy themselves as to their accuracy; (iii) no liability is accepted in negligence or otherwise, for any loss arising from the use of these particulars and; iv) the reference to any plant, machinery equipment, services, fixtures or fittings at the property shall not constitute a representation(unless otherwise stated) as to its state or condition or that it is capable of fulfilling its intended function. Prospective purchasers should satisfy themselves as to the fitness of such items for their requirements. Fixtures and fittings may be replaced with items of a comparable quality. No employee of Braeburn Estates or any of its associated companies or partnerships (and their Joint Agents where applicable) has any authority to make or give any representation or warranty or enter into any contract whatever in relation to the property; November 2023 Subject to Contract

One Casson Square

# The Portia Fox Penthouse



SOUTHBANK PLACE  
LONDON